

Search and Call Tools for Congregations

Advancing the Spirit's guidance into God's future

LONG LOCAL CHURCH PROFILE

Who
are
we

Who
is our
neighbor

Who is
God
calling us
to become

?

The new Local Church Profile is not just for congregations in search of a pastor. *All* congregations are encouraged to engage in its process of discovery every 3-5 years. The UCC Local Church Profile reflects valuable data, assesses ministry, clarifies change, and helps advance the calling of the congregation. Not just to be completed by a search committee – the more participation, the better!

MINISTERIAL EXCELLENCE,
SUPPORT & AUTHORIZATION

**UNITED CHURCH
OF CHRIST**



UNITED CHURCH OF CHRIST

LOCAL CHURCH PROFILE

Saint John's United Church of Christ
Schuylkill Haven, PA
&
Saint Mark's United Church of Christ
Cressona, PA

Settled Pastor

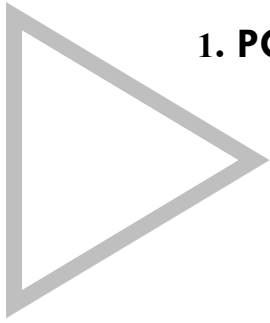
Pennsylvania Southeast Conference / Schuylkill Association

November 20, 2025

LOCAL CHURCH PROFILE CONTENTS

- Position Posting
- Who Is God Calling Us To Become?
- Who Are We Now?
- Who Is Our Neighbor?
- References
- Consent and Validation

*“God is able to provide you with every blessing, so that
having all sufficiency in all things at all times,
you may abound in every good work.”
(2 Corinthians 9:8)*



1. POSITION POSTING

- a. LISTING INFORMATION
- b. SCOPE OF WORK
- c. COMPENSATION & SUPPORT
- d. WHO IS GOD CALLING TO MINISTER WITH US?

1a. LISTING INFORMATION

Church name: Saint John's United church of Christ
Street address: 121 East Main Street, Schuylkill Haven, PA 17972
Supplemental web links: Website: www.stjohnsreformed.com
Facebook: Saint John's United church of Christ, Schuylkill Haven
YouTube Channel: St. John's UCC Schuylkill Haven PA

Church name: Saint Mark's United church of Christ
Street address: 30 Pottsville Street, PO Box 55, Cressona, PA 17929
Supplemental web links: Website: <https://stmarkscressonapa.com>
Facebook: St. Marks UCC
YouTube Channel: St. Marks UCC Cressona PA

Additional ecumenical affiliations: None

Conference: Pennsylvania Southeast Conference of the United church of Christ
www.psec.org

Association: Schuylkill Association of PSEC

UCC Conference or Association Staff Contact Person:

Rev. Kevin J. McLemore

Associate conference Minister for Search and Call

Cell: 773-717-0029

mclmore@psec.org

Summary Ministry Description: (See "Shared Ministry Covenant" attachment)

We are looking for a shared pastor to help our congregations move forward. Together our positions are a full-time position.

St. John's: We are a small, hard-working congregation with strong lay leadership. We have recently experienced a short but vibrant pastorate, which included a period of healing. We are seeking someone who is a "people person" and able to connect easily with others and with our community, someone who has good communication skills and will provide a stable atmosphere for growth.

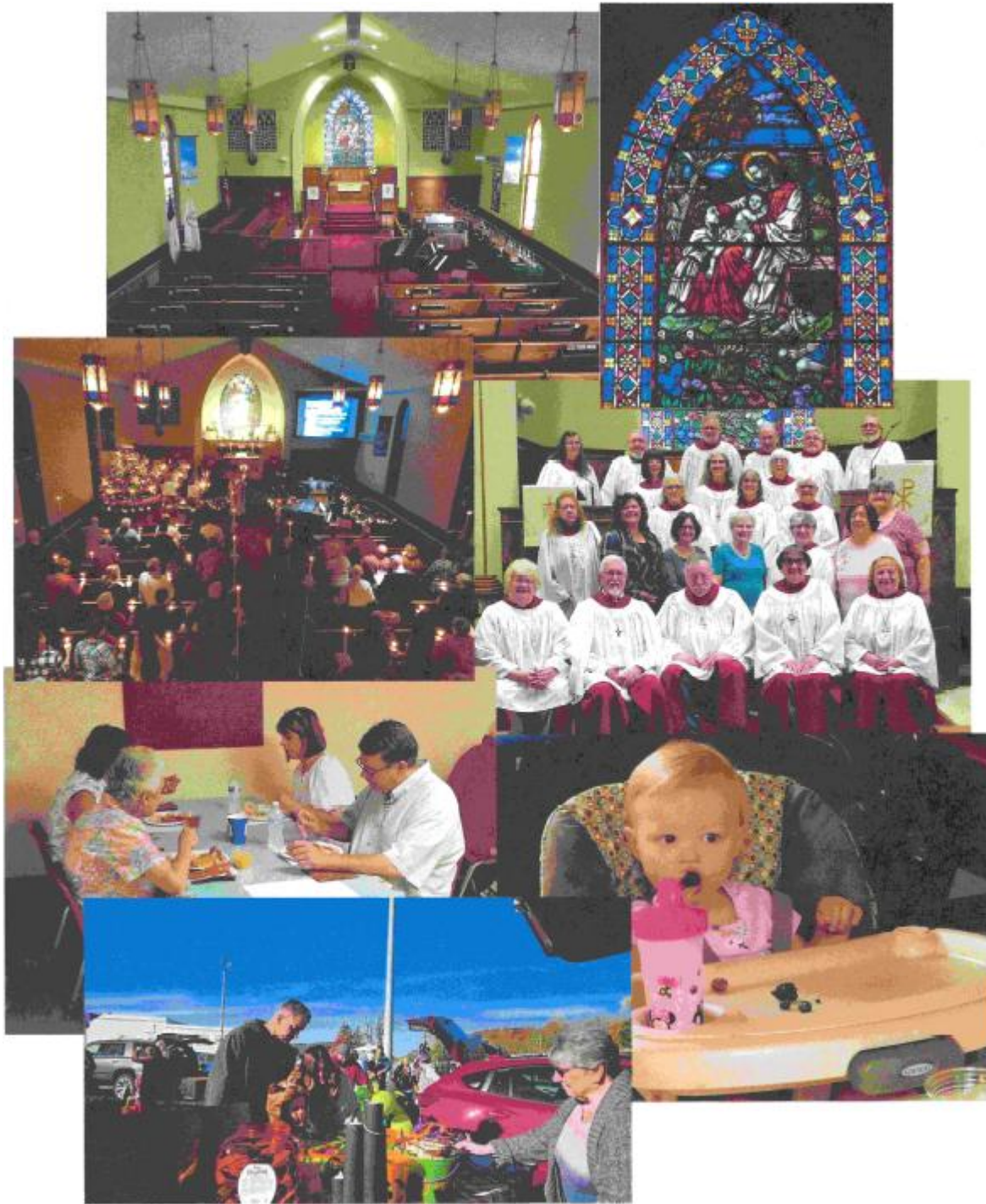
St. Mark's: As a congregation, we are determined to maintain a vibrant, spiritual presence in the Cressona area. Like St. John's, we have been fortunate to have a dedicated and seasoned team of lay leaders who will be helpful in assisting the pastor in various settings. We are seeking a pastor that will provide spiritual and administrative leadership, that will nurture a worship experience appealing to both young and old, will be an active participant in the community, and will provide guidance and support in revitalizing youth participation. Pastoral visitation will also play a vital role in maintaining a connection with those unable to attend and participate in church-related activities.

Photographs:

St. John's:



St. Mark's:



What we value about living in our area (2 – 3 sentences):

People are our strongest asset. Both communities have strong family values and a sense of helping neighbors. We have an extensive volunteer network, dedicated educators and active civic organizations. Penn State Schuylkill Campus is located in our community. Outdoor activities abound as we are located in a rural area surrounded by beautiful natural resources.

The Appalachian Trail winds throughout the area. While we live in a rural area which is more affordable for families, we are within close proximity to several metropolitan areas. New York City and Philadelphia are within driving distances for day trips to enjoy sporting or cultural events. Our churches are located approximately one mile apart.

Current size of membership: There is a difference between the 11-year report and what is big reported on this profile. Membership rolls were updated since the last time we reported membership earlier in 2024.

St. John's: 147 adults 14 unconfirmed children

St. Mark's: 263

Languages used in ministry (*other than English*): None

Position Title: Settled

Position Duration (*choose one, delete the other options listed*):

Settled – a called position intended for longer-term ministry in which the minister moves church membership to the congregation and moves standing to related association

Compensation Level (*choose one, delete the other options listed*):

Full Time - between two churches

Does the total support package meet conference compensation guidelines?

Yes

1b. SCOPE OF WORK

- Preparation and leadership of Sunday worship services and all holiday worship services, including scripture study, crafting liturgy and bulletins, sermon preparation, guiding lay leaders, planning of music in coordination with the music staff, preaching and offering prayers
- Faith formation and vitality through prayer, Bible study, identifying helpful resources and opportunities and helping lay persons take advantage of them
- Leadership development by working with people in the church to create ministry and programs
- Pastoral care in collaboration with lay people, i.e. visiting shut-ins, those hospitalized, in nursing care facilities and serving communion to shut-ins
- Community engagement and leading the way for the church to be an ambassador of God's love including being a representative of the church to local organizations
- Wedding and funerals for participants in the worshipping community
- Attend meeting and give leadership as needed to church programs, in collaboration with lay leadership
- Participate in wider church activities such as conference and association meetings

- Counseling, listening and referral
- Availability to wider community for funerals, weddings, special worship programs, and as a representative of the church to local organizations
- Study and prayer to increase faith and to improve skills so as to lead, teach, preach better
- Energizing and deepening the spiritual connections and faith understanding of others in all they do
- Motivate congregant participation in activities and ministry

Core Competencies:

St. John's: Spiritual/Passionate
 Collaborator/Communicator
 Motivational/Enthusiastic

St. Mark's: Caring
 Organized
 Time-conscious

1c. COMPENSATION AND SUPPORT

Salary Basis (*from the Call Agreement Workbook, equal to Cash Salary plus Value of Parsonage/Housing Allowance*): \$68,000 - \$75,000

Benefits (*choose one*):

Salary plus Benefits – the salary basis above does not include benefits, which the churches will pay (Social Security allowance, pension, insurances)

What is the expected living situation for your next minister?

We do not have a parsonage. The pastor would select his or her own home that would be within commuting distance to the churches.

Comment on the residential/commuting expectations for your next minister.

We would expect the pastor to live within a reasonable distance to allow them to have an active role in local ministerium and community activities.

State any incentives: Increased vacation time

Describe peer and professional supports available for ministers in your association/conference:

The Pennsylvania Southeast Conference is blessed to be one of the most UCC-dense regions of the country, with many nearby UCC clergy to form relationships with. PSEC offers more than a dozen Communities of Practice, including specialty groups for interim clergy, young clergy and based on interests. Our churches are also a part of a very strong Schuylkill Association Ministerium and Schuylkill Haven and Vicinity Council of Churches.

If applicable, describe how your church will adopt part-time adjustments in the pastoral schedule to support a minister's bi-vocational employment: Not applicable

1d. WHO IS GOD CALLING TO MINISTER WITH US?

Describe the ministry goals you envision your next minister co-collaborating with the congregation to achieve:

- Faithful to the Gospel/passionate/sharing the Word
- Outreach ministry into the community
- Attract people in all stages of life, welcome everyone
- Increase care giving to provide support to our shut-ins
- Find ways to meet the needs of the youth in our surrounding communities
- Strengthening the bond between the two churches, stronger together, sometimes thinking outside of the box

Describe how your vision of the minister you are now seeking will assist the congregation in making an impact beyond its walls.

St. John's is involved with several community projects including Clothing Giveaways, Food Pantry and Borough Day. We would want a minister to assist in these community projects and help develop more projects and help make more connections and strengthen our relationship with the community.

St. Mark's: As the congregation, we would like to continue with the programs we currently support. Some of the programs are "trunk or treat", Souper Bowl of Caring, blanket collection, Bethany Children's Home Annual Christmas Giving, Council of Churches Food Pantry, Disaster Relief and quarters for a cause. We would all like to see more new things happening in our church. We are always willing to try to make new things happen.

Specify language requirements or culturally-specific capacities preferred in a next ministerial leader, and why those matter to the congregation's sense of calling.

St. John's: We are an English speaking congregation with traditional references to God. We use the New Century Hymnal and have a traditional worship service that is relaxed/informal. Our congregation is very comfortable with traditional language and references.

St. Mark's: We would prefer mainly an English-speaking pastor and someone who can speak to not only the adult congregation but the children/youth as well.

Based on what you have learned about who your church is, who your church's neighbor is, and who God is calling the church to become, describe four areas of excellence from **The Marks of Faithful & Effective Authorized Ministry** that your next minister will display to further equip the congregation's ministry in these areas.

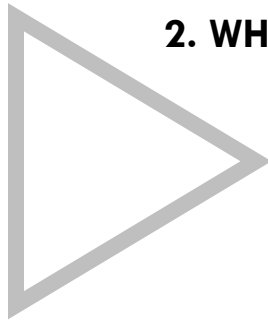
St. John's:

1. Exhibiting a spiritual foundation and ongoing spiritual practices

2. Caring for others
3. Encountering the other with justice and mercy
4. Strengthening inter- and intra- personal assets

St. Mark's:

1. Exhibiting a spiritual foundation and ongoing spiritual practices
2. Nurturing UCC identity
3. Building transformational Leadership skills
4. Caring for others.



2. WHO IS GOD CALLING US TO BECOME?

“You shall love the Lord your God with all your heart, and with all your soul, and with all your mind.” (Matthew 22:37 NRSV)

Who is God calling you to become as a congregation?

St. John's: God is calling all of us to do his work here on earth. We are to love one another, reach out to others and bring people to God.

St. Mark's: God is challenging us to become more active in our community and the continual upkeep of God's house. Example: painting/refreshing the interior rooms, upgrading sound/video system and restoration of our 15 stained glass windows.

Describe how God is calling you to reach out to address the emerging challenges and opportunities of your community and congregation.

St. John's: For almost a year, we have been without a pastor. We have had to learn to lead our worship services and step out of our comfort zones to continue as a congregation. We are incredibly blessed to have strong lay leadership and members who have been willing to lead us forward. We recently, out of necessity, have had a free clothing giveaway which led us to an amazing mission project for our church. Our Clothing Corner now has 2 giveaways a year to help our community and surrounding communities with free clothing. We are also affiliated with the Red Cross to help fire victims with clothing.

St. Mark's: In times of need, our church family has been there to support our local community during unforeseen circumstances. Our vision is to be strong and fruitful.

3. WHO ARE WE NOW?

“You shall love your neighbor as yourself.” (Matthew 22:39 NRSV)

- a. CONGREGATIONAL REFLECTIONS
- b. 11-YEAR REPORT
- c. CONGREGATIONAL DEMOGRAPHICS
- d. PARTICIPATION AND STAFFING
- e. CHURCH FINANCES
- f. HISTORICAL INFORMATION

3a. CONGREGATIONAL REFLECTIONS

Describe your congregation’s life of faith.

Both Churches have traditional worship with a relaxed setting. We commune once a month and on special holidays.

St. John’s: We describe God as God the Father. We believe the Holy Spirit works through us and among us. We are a small congregation that tries our best to live the gospel in our community. Our monthly mission focus reflects this commitment locally and throughout the world.

St. Mark’s: Our congregation’s life of faith includes fellowship, community, recharge, unity and acceptance. Our missions: Blanket Drive, “Trunk or Treat”, providing needed items to the local food pantry and clothing closet, participating in the UCC 5-for-5 and Disaster Relief. The congregation is always willing to do what they can to help others.

Describe several strengths or positive qualities of your congregation.

St. John’s: We have a very faithful congregation who enjoy being together and working together. We have a generous congregation who always supports the needs of our community and our mission projects. We are blessed to have a very strong lay leadership.

St. Mark’s: Acceptance, perseverance, dedication, fun, humor, caring for others, persistence, one big family, family oriented, community involvement, service to the community, openness and acceptance to change, welcoming. Our people are a very loving, committed congregation who understands that each of us has a different contributing role to provide to make our church successful. We do not give up on our members and are always looking out for them and their needs. Whether we attend church weekly, monthly, yearly or just in spirit, we are willing to step up when needed to make the ministries of our church successful.

Describe what worship is like when your congregation gathers.

St. John’s: Sunday worship is “relaxed traditional” and includes hymn, scripture readings and teaching based on the Revised Common Lectionary. The hour long service is held in our spacious Sanctuary (or in our first floor chapel). Holy Communion is celebrated on the first Sunday of

each month and on liturgically significant days. Mid-week services are held each Wednesday during Lent alternating between St. John's and St. Mark's UCC, Cressona. The informal 40-minute service includes singing, prayers and a brief message. Our congregation enjoys "down to earth preaching", biblically based but relatable to our everyday lives.

St. Mark's: Worship follows the lectionary and takes place in the sanctuary. Our services consist of: Pasing of the Peace, Call to Worship, Confession, Mediation, Children's Moment, Hymns – traditional and contemporary. We use organ, piano, musical solos, choir and handbells. Also hymnals and an audio visual system is used to meet the needs of the congregation. The services are broadcast for our members at large. Our services are a work in progress. People of all ages participate whether reading scripture, announcements, greeting, ushering, or serving communion. The services are biblical based and at times congregation participation is expected. Before the service starts, parishioners socialize with one another and the Sanctuary is happy place. The scriptures and music set the tone of the service and there is time of reflection and prayer during the prelude and postlude.

Describe the educational program/faith formation vision of your church.

St. John's: We have Adult Sunday School but no faith formation for children at this time. We, however, involve our youth in lay reading, bell choir, youth deacon on consistory, acolytes and in the life of the church. We share confirmation classes and Bible Studies with St. Mark's.

St. Mark's: Christian Education currently provides Sunday School for infants through fourth grade. We currently do not have an adult Sunday School class. We do have a Bible study weekly. Confirmation classes are shared with St. John's.

Describe how your congregation is organized for ministry and mission.

The consistory is the governing body of our churches. We have several organized teams and committees that act and work independently and report to the consistories. The consistories communicate to the congregation through Sunday morning announcements, texts, email, phone calls and newsletters. A yearly congregational meeting is scheduled every November with the option of calling additional meetings when necessary.

- When it comes to decision-making, how many hours are spent in meetings per month?

St. John's and St. Mark's: 2 to 3 hours per month

- Think of a time when action had to be taken quickly, for example when a crisis or disaster occurred. How was that accomplished?

St. John's and St. Mark's: Our leadership will call a special meeting either immediately after worship, an evening or on an upcoming Sunday. We meet to discuss, hear opinions and make a decision.

- Can you provide the next minister with a copy of an organization structure, bylaws and/or annual report to further explain the patterns of the church’s activity and governance? [Yes/No] **St. John’s and St. Mark’s:** Yes

3b. 11-YEAR REPORT

(add here the 11-Year Report developed with the help of your conference staff, UCC Data Hub, and MissionInsite) (Contact the Assistant for Search and Call (brea@psec.org) to get documents)

3c. CONGREGATIONAL DEMOGRAPHICS

Describe those who participate in your church.

St. John’s		<i>Is this number an estimate? (check if yes)</i>
Number of active members:	147	No
Number of active non-members:	10	No
Total of church participants (sum of the numbers above):	157	No

Describe those who participate in your church.

St. Mark’s		<i>Is this number an estimate? (check if yes)</i>
Number of active members:	244	No
Number of active non-members:	19	No
Total of church participants (sum of the numbers above):	263	No

Percentage of total participants who have been in the church:

St. John’s		<i>Is this number an estimate? (check if yes)</i>
More than 10 years:	85%	✓
Less than 10, more than 5 years:	10%	✓
Less than 5 years:	5%	✓

Percentage of total participants who have been in the church:

St. Mark’s		<i>Is this number an estimate? (check if yes)</i>
More than 10 years:	70%	✓
Less than 10, more than 5 years:	10%	✓
Less than 5 years:	20%	✓

Number of total participants by age: **St. John's**

0-11	12-17	18-24	25-34	35-44	45-54	55-64	65-74	75+	<i>Are these numbers an estimate? (check if yes)</i>
12	4	9	16	18	17	19	28	36	✓

Number of total participants by age: **St. Mark's**

0-11	12-17	18-24	25-34	35-44	45-54	55-64	65-74	75+	<i>Are these numbers an estimate? (check if yes)</i>
26	11	7	27	59	25	20	43	45	✓

Percentage of adults in various household types:

St. John's		<i>Is this number an estimate? (check if yes)</i>
Single adults under 35:	21%	✓
Households with minors:	10%	✓
Single adults age 35-65:	15%	✓
Joint households with no minors:	25%	✓
Single adults over 65:	29%	✓

Percentage of adults in various household types:

St. Mark's		<i>Is this number an estimate? (check if yes)</i>
Single adults under 35:	19%	✓
Households with minors:	21%	✓
Single adults age 35-65:	8%	✓
Joint households with no minors:	28%	✓
Single adults over 65:	24%	✓

Education level of adult participants by percentage:

St. John's		<i>Is this number an estimate? (check if yes)</i>
High school:	49%	✓
College:	19%	✓
Graduate School:	4%	✓
Specialty Training:	24%	✓
Other (please specify):	4%	✓

Education level of adult participants by percentage:

St. Mark's		<i>Is this number an estimate? (check if yes)</i>
High school:	49%	✓
College:	31%	✓
Graduate School:	8%	✓
Specialty Training:	12%	✓
Other (please specify):		

Percentage of adults in various employment types:

St. John's		<i>Is this number an estimate? (check if yes)</i>
Adults who are employed:	49%	✓
Adults who are retired:	41%	✓
Adults who are not fully employed:	10%	✓

Percentage of adults in various employment types:

St. Mark's		<i>Is this number an estimate? (check if yes)</i>
Adults who are employed:	63%	✓
Adults who are retired:	31%	✓
Adults who are not fully employed:	6%	✓

Describe the range of occupations of working adults in the congregation:

Teachers, nurses, bankers, plant managers, health care workers, business owners, white-collar and blue-collar workers.

Describe the mix of ethnic heritages in your congregation, and the overall racial make-up. Most UCC congregations tend to describe themselves as “diverse.” Yet, the vast majority of UCC congregations are mono-cultural. What does diversity mean in your context?

St. John’s: We have one family from the Philippines in our congregation, otherwise we are mono-cultural.

St. Mark’s: We have one family from Haiti.

Has your congregation recently had a conversation about welcoming diversity, or do you plan to hold one on the near future (perhaps using, for example, the Welcoming Diversity Inventory)?

Please note the date. Comment after the exercise:

St. John’s and St. Mark’s: Not at this time.

3d. PARTICIPATION AND STAFFING

Complete the following chart. Please leave blank any fields that are not applicable to your congregation.

St. John’s - Ways of Gathering	Estimated number of people involved in attendance	Who plans each of the listed gatherings? <i>(list any and all worship planners, such as various lay leaders, pastors, musicians, other staff)</i>
Adult Sunday School Class	12	Education Chair
Baptisms <i>(number last year)</i>	5 baptisms	Pastor
Children’s Groups or Classes	N/A	
Christmas Eve and Easter Worship	C - 68 E - 75	Director of Music & Worship
Church-wide Meals	60	Rental Coordinator
Choirs and Music Groups	25	Director of Music & Worship
Church-based Bible Study	with St. Mark’s	

Communion (<i>monthly</i>)	49	Altar Guild, Pastor
Community Meals	N/A	
Confirmation (<i>number confirmed last year</i>)	1 confirmation	Pastor, Elders
Drama or Dance Program	N/A	
Funerals (<i>number last year</i>)	7 funerals	Pastor
Intergenerational Groups	All	Staff
Outdoor Worship (combined)	100	Pastor, Director of Music
Prayer or Meditation Groups	N/A	
Public Advocacy Work	N/A	
Retreats	N/A	
Theology or Bible Programs in the Community	N/A	
Weddings (<i>number last year</i>)	1 wedding	Pastor
Worship (9:00AM in person)	45	Pastor, Worship & Music Team
Worship (9:00AM virtual)	14	Pastor, Worship & Music Team
Young Adult Groups or Classes	N/A	
Youth Groups or Classes	N/A	
Clothing Giveaway (Spring & Fall)	85	Mission Team
Basket Raffle (Borough Day)	350	Fundraising Team

St. Mark's - Ways of Gathering	Estimated number of people involved in attendance	Who plans each of the listed gatherings? (<i>list any and all worship planners, such as various lay leaders, pastors, musicians, other staff</i>)
Adult Groups or Classes	0	
Baptisms (<i>number last year</i>)	1	Pastor, Director of Music
Children's Groups or Classes	10-25	Sunday School Teachers

Christmas Eve and Easter Worship	C-71 E-112	Worship Committee, Director of Music, Pastor
Church-wide Meals	60	Lay Fellowship
Choirs and Music Groups	30	Director of Music
Church-based Bible Study	6	Lay Leader
Communion (<i>served how often?</i>)	50	Communion Team Leader
Community Meals	N/A	
Confirmation (<i>number confirmed last year</i>)	2	Pastor
Drama or Dance Program	N/A	
Funerals (<i>number last year</i>)	6 funerals	Pastor, Director of Music
Intergenerational Groups	N/A	
Outdoor Worship (combined)	100	Pastor, Director of Music
Prayer or Meditation Groups	5	Prayer Circle
Public Advocacy Work	N/A	
Retreats	N/A	
Theology or Bible Programs in the Community	N/A	
Weddings (<i>number last year</i>)	1	Pastor, Director of Music
Worship (time slot: <u>10:30AM</u>)	35-100	Pastor, Worship Committee
Young Adult Groups or Classes	N/A	
Youth Groups or Classes	N/A	

List all members or regular participants in your congregation who are ordained, licensed, or commissioned ministers. Indicate those with current United Church of Christ Three-Way Covenants or Four-Way Covenants.

(**St. John's** does not have anyone that meets this category)

St. Mark's

Name	Three- or Four-Way Covenant? <i>(3 or 4 or No)</i>	Ministry Setting	Type of Ministry Role	Retired? <i>(Y or N)</i>
Rev. Karl Jones, Jr.		Disaster Relief and Response Coordinator for PSEC	Retired	Y
Jennie Strauch		St. John's UCC, St. Clair, PA	Lay Minister	N

If one or more previous pastors or retired ministers currently hold membership in the church, describe their role(s) in the life of the congregation:

(St. John's does not have anyone that meets this category)

St. Mark's: The Rev. Karl Jones served as our pastor from 1985-2006. He is active in the life of St. Mark's Church, primarily within the music ministry. He provides support with building and other projects when appropriate. He has had strong relationships with the previous pastor and works hard to maintain appropriate boundaries. Most recently he has been supporting us, if available, to provide communion and spiritual guidance.

List all current staff, including ministers. Exclude the position you are seeking to fill. Indicate which staff person serves as head of staff.

St. John's Staff Position	Head of Staff?	Compensation (full time, part time, volunteer)	Supervised by	Length of Tenure for current person in this position
Parish Assistant		Part Time	Consistory	20 years
Director of Music		Part Time	Consistory	25 years
Organist		Part Time	Consistory	Position Open
Treasurer		Volunteer	Consistory	15 years
Financial Secretary		Volunteer	Consistory	11 years

St. Mark's Staff Position	Head of Staff?	Compensation (full time, part time, volunteer)	Supervised by	Length of Tenure for current person in this position
Admin Assistant		Part Time	Pastor & Consistory	29 years
Treasurer		Part Time	Consistory	41 years
Music Coordinator		Part Time	Worship Committee	38 years
Financial Secretary		Part Time	Admin Assist & Secretary	3 years
Steward		Part Time	Consistory	4 years

REFLECTION

Reflection: After reviewing the congregational demographics and activities above, what does this information reflect about your congregation's overall ministry?

St. John's: We are a small congregation, doing our best to minister to our members and those in our community. We focus on the things we are able to do.

St. Marks's: We feel we are committed to live our faith and step up when needed to help and lead.

3e. CHURCH FINANCES

Current annual income (dollars used during most recent fiscal year)

St. John's Source	Amount
Annual Offerings and Pledged Giving	\$94,110.50
Endowment Proceeds (<i>as permitted within spending policy, such as a cap of typically 4.5%-5% on total return</i>)	\$18,359.38
Endowment Draw (<i>beyond what is permitted by spending policy, "drawing down the principal"</i>)	\$1,200.00
Fundraising Events	\$11,781.77
Gifts Designated for a Specific Purpose	\$ -
Grants	\$ -
Rentals of Church Building	\$1,650.00
Rentals of Church Parsonage	\$ -

Support from Related Organizations <i>(e.g. Women's Group)</i>	\$ -
Transfers from Special Accounts	\$ -
Other (specify):	\$ -
Other (specify):	\$ -
TOTAL	\$127,101.65

St. Mark's Source	Amount
Annual Offerings and Pledged Giving	\$150,995.01
Endowment Proceeds <i>(as permitted within spending policy, such as a cap of typically 4.5%-5% on total return)</i>	\$7,470.54
Endowment Draw <i>(beyond what is permitted by spending policy, "drawing down the principal")</i>	\$0
Fundraising Events	\$25,925.70
Gifts Designated for a Specific Purpose	\$14,850.50
Grants	\$0
Rentals of Church Building	\$0
Rentals of Church Parsonage	\$0
Support from Related Organizations <i>(e.g. Women's Group)</i>	\$0
Transfers from Special Accounts	\$0
Other (specify):	\$0
Other (specify):	\$0
TOTAL	\$199,241.75

St. Mark's: Special note related to annual offerings and planned giving

St. Mark's experienced the loss of several significant contributors due to death of transfer of membership. The full extent of the loss of income (contributions) will not be known until the end of 2025.

Current annual expenses (dollars budgeted for most recent fiscal year):

St. John's: \$113,213.00

St. Mark's: \$253,356.22 Although the 2024 Annual Report listed \$454,646.33 as total expenses, actual budgeted expenses were \$253,356.22. The remaining expenses included transfer to the Commercial Savings Account and Investment Account, the down payment on the stained-glass window restoration project, designated benevolences, unbudgeted repairs and other non-budgeted expenses. Monies to cover these non-budgeted expenses came from designated sources – memorial monies, the Operating Reserve Fund, the Property Improvement Reserve Fund or designated gifts given in previous years.

Attach most recent church budget, spending plan, operating statement, or annual treasurer's report as shared publicly with the congregation, or – if your church does not pass an annual budget – list current budgeted expenses here.

Considering total budgeted expenses for the year, compare total ministerial support. What is the percentage? **St. John's:** 49.8%

St. Mark's: 33%

Has the church ever failed to pay its financial obligations to a minister of the church?

St. John's: No **St. Mark's:** No

Is your church 5-for-5, i.e. does it include each of the following contributions during the church year? (*indicate those included during the most recent fiscal year*)

St. John's

- Our Church's Wider Mission
- One Great Hour of Sharing
- Strengthen the Church
- Neighbors in Need
- Christmas Fund

St. Mark's

- Our Church's Wider Mission
- One Great Hour of Sharing
- Strengthen the Church
- Neighbors in Need
- Christmas Fund

In what way is OCWM (Basic Support) gathered? If calculated as a percentage of operating budget, what is that percentage? (*recommended 10%*)

St. John's: Budgeted \$500.00/year

St. Mark's: OCWM is a part of the financial plan and is supported by the weekly offerings.

What is the church's current indebtedness?

St. John's: None

St. Mark's: None

Total amount of loan debt:

Reason for debt:

Are capital and other payments current?

If a building program is projected or underway, describe it, including the projected start/end date of the building project and the total project budget.

St. John's: In preparation of the 100th anniversary of our church building, we have been renovating and updating our church building using the proceeds of selling our parsonage such as restoration of stained glass windows, elevette work, roof repair, a new sound system, and parking lot improvements.

St. Mark's: We have embarked on a stained-glass window restoration project that was approved by the congregation in October 2024. The current windows were installed in the church in the late 1800's and needed major repairs. The entire project (\$153,000) is being financed with memorial funds and gifts from members of the congregation. When the project is completed, December 2025, it will be completely paid.

If the church has had capital campaigns in the last ten years, describe:

(**St. John's** has not had a capital campaign in the last ten years.)

St. Mark's:

Year(s)	Purpose	Goal	Result	Impact
2015	Sanctuary Upgrades	\$100,000	\$100,000+	Improved lighting, A-V System, Painting of Sanctuary, Misc.
		\$	\$	

Does your church have an endowment? **St. John's:** Yes **St. Mark's:** Yes

What is the market value of the assets? **St. John's:** \$208,800.23

St. Mark's: \$250,315.93

Are funds drawn as needed, regularly, or under certain circumstances?

St. John's: \$100/month

St. Mark's: Only proceeds (approx.. \$12,500) from the investment are available for the church to use to support expenses. The original investments have remained in the fund and have grown in value.

What is the percentage rate of draw (last year, compared to 5 years ago)?

St. John's: not a percentage at this time - \$100/month

St. Mark's: 5% annually which are only funds from the proceeds.

Describe draw on endowment, if any, to meet operating budget expenses for the most recent year and the past five years:

St. John's: \$50/month is used to pay bills, \$50/month is used toward benevolence

St. Mark's: Proceeds are included in the annual financial plan to support day to day expenses.

At the current rate of draw, how long might the endowment last?

St. John's: Principal balance cannot be spent. Draws stop if they approach the principal threshold.

St. Mark's: Original investment and growth are not touched.

Other Assets

Reserves (savings): **St. John's:** \$110,088.00

St. Mark's: \$10,142.50

Investments (other than endowment):

St. John's: \$54,870.00

St. Mark's: \$137,045.08 in the JP Morgan Money Market fund administered by LPL Financial. A majority of these funds are designated for specific purposes and/or projects.

Does your church have a parsonage?

St. John's: No **St. Mark's:** No

Describe all buildings owned by the church:

St. John's: Strunck Memorial Hall is our current church building which was built in 1925-27. This granite and cast stone building anchors one end of the business district on the corner of Main and Dock Streets in downtown Schuylkill Haven. The building is four stories and includes a large social hall on the ground floor; a chapel, offices, meeting rooms and classrooms on the first floor and a large sanctuary which occupies the second and third floors. We have an elevette that serves the entire building excluding the third floor. The offices, chapel and meeting rooms are air-conditioned.

St. Mark's: The main building was built in late 1800's. An addition was added in 1970. All three floors are served by an elevator. This includes: the basement – Fellowship Hall the first floor – Hock Hall, two additional rooms and handicap restroom, music room, classrooms, library, church office and Pastor's office the second floor – the sanctuary and balcony (air-conditioned)

Describe non-owned buildings or space used or rented by the church:

St. John's: None

St. Mark's: None

Which spaces are accessible to wheelchairs? (*worship space, pulpit, fellowship space, facilities, etc.*)

St. John's: All areas excluding level 3.

St. Mark's: The church has an elevator that services all three floors of the original building. The lectern/pulpit area in the sanctuary is not accessible. The addition is a single-floor structure and is completely accessible.

Reflection: After reviewing the church's finances and assets described above, what does this information reflect about your congregation's mission and ministry?

St. John's: We have no current debt and have assets to continue our ministry into the future. We have simplified our budget process. We have a finance committee with financial backgrounds that prepare our budget and monitor our investments.

St. Mark's: The budgeting process originates with the treasurer preparing a preliminary financial plan for the church. The preliminary plan is then reviewed by the financial management committee and then submitted to the consistory. With consistory's approval, the financial plan is then presented to the congregation at the annual meeting in November for approval. Each year St. Mark's sets aside 5-10% of the profits from fund raising for additional benevolent projects.

3f. HISTORICAL INFORMATION

Name one to three significant happenings in the history of your church that have shaped the identity of your congregation. Add the most important event in the life of your church in the past 10 years.

St. John's: The building of the Strunck Memorial Hall was significant in the history of our congregation. When originally built, there was a large gymnasium (which has since been converted into the social hall, chapel and classrooms) which provided much needed room for the congregation and the community. It was centrally located in town, so most people walked to church. It was used for meetings and banquets. The church not only served our congregation but also our town. In the past ten years COVID changed almost everything about our church and about our worship service. Our Clothing Corner and clothing giveaways have also been an important event in our church. It has made us aware of the need in our community and with the Red Cross and gave our congregation a mission to work on together.

St. Mark's: St. Mark's and St. John's has successfully navigated and implemented sharing pastoral ministries. We have done a major renovation on the sanctuary which included painting, installation of new carpeting, sound system, electrical upgrades, video system and a complete organ overhaul. Currently, we are doing a stained-glass renovation project with an expected completion in December 2025.

Describe a specific change your church has managed in the recent past.

St. John's: The resignation and difficult transition of a previous pastor during COVID.

St. Mark's: We have seen several members step up to lead and ensure the life of our church is moving forward. During difficult times we have banded together to support on another.

Every church has conflict, some minor, some larger. "Where two or three are gathered, there will be disagreement...." Describe your congregation's values and practices when it comes to conflict.

St. John's: We come together to address any issues. We are supportive of each other. We have had minimal issues.

St. Mark's: We try to anticipate all reasonable questions that may lead to conflict. We research those and bring appropriate answers to the congregation and all parties involved before requiring a decision. We keep the congregation informed/involved and ask opinions.

Ministerial History *(include all previous ministerial staff for the past 30 years)*

St. John's Staff member's name	Years of service	UCC Standing (Y/N)
Rev. Kevin Fruchtl	4	Yes
Rev. Janet E. Lewis	22	Yes
Rev. Dale Groff (interim pastor)	2	Yes
Rev. David R. Crowle	10	Yes

St. Mark's Staff member's name	Years of service	UCC Standing (Y/N)
Rev. Kevin Fruchtl	6	Yes
Bruce Dalious (interim pastor)	18 month	Yes
Rev. Nathan Druckenmiller	8	Yes
Carey Miller (interim pastor)	1	Yes
Rev. Richard Johnson	3	Yes
Rev. Karl Jones, Jr	21	Yes

Comment on what your church has learned about itself and its relationship with persons who provided ministerial leadership:

St. John's: Ask us

St. Mark's: We fully support the ministerial leadership and are open to new ideas. However, we also have learned we need to hold leadership accountable, such as requesting monthly pastoral reports, providing ministerial support to our shut-in members, etc. We learned we can lean on each other and be there for our community. We are a family, a team. Together we are stronger and can encourage positivity in all aspects.

Has any past leader left under pressure or by involuntary termination?

Y/N/Ask us **St. John's:** Ask us

St. Mark's: No

Has your church been involved in a Situational Support Consultation?

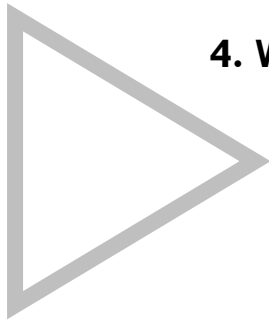
Y/N/Ask us **St. John's:** No

St. Mark's: No

Has a past pastor been the subject of a Fitness Review while at your church?

Y/N/Ask us **St. John's:** No

St. Mark's: No



4. WHO IS OUR NEIGHBOR?

“You shall love your neighbor as yourself.” (Matthew 22:39 NRSV)

a. COMMUNITY VISION

b. MISSION InSit

4a. COMMUNITY VISION

How do the relationships and activities of your congregation extend outward in service and advocacy?

St. John's: We have a monthly benevolent giving plan. Including giving areas such as SPCA, Locust Lake ministry, The Cloud Home, Suicide Prevention Programs in our area schools and several others. We have our clothing giveaways twice a year for our local communities. We share clothing with other local agencies that distribute clothing such as Bridge 127 and New Life Thrift Store. We collect food and monetary donations for our local food pantry and several members volunteer there.

St. Mark's: Our local service activities include: blanket drive, “trunk or treat”, pie and candy making, Bethany Children’s Home Christmas gifts, food pantry donations, supporting Girl Scouts, Phoebe Ministries and Schuylkill Haven and Vicinity Council of churches.

Describe your congregation’s participation in meetings, relationships and activities connecting the wider United Church of Christ (association / conference / national setting).

St. John's: We have representatives that attend our local association meetings as well as delegates that attend conference meetings.

St. Mark's: Our global service activities include: Church’s Wider Mission, OCWM and Disaster Relief Ministers. We have delegates that attend association and conference meetings and we have members on committees of Ministry and Financial Consistory at conference. One of our members is the moderator for the Schuylkill Association.

Many local churches love to tell the story of what they are doing in the community to transform lives. Some have identified certain aspects of their witness into the wider community using language shared with other UCC congregations. (Find more information as desired at ucc.org.) Check any statements below that apply to your UCC faith community.

St. John's: None

St. Mark's:

Accessible to All (A2A)

Just Peace

Creation Justice

Global Mission Church

Economic Justice

Open and Affirming (ONA)

Faithful and Welcoming

WISE Congregation for Mental Health

God Is Still Speaking (GISS)

Other UCC designations:

Border and Immigrant Justice

Designations from other denominations

Inter-cultural/Multi-racial (I'M)

Reflect on what the above statement(s) mean(s) to your community. Is your congregation interested in working toward any of the above statements of witness in the near future?

St. John's: Faithful and Welcoming

St. Mark's: Presently, we are not pursuing more involvement but we as a congregation are not opposed to further our involvement in the future.

Describe your congregation's participation in ecumenical and interfaith activities (with other denominations and religious groups, local and regional).

St. John's: We have been in covenant with St. Mark's with shared ministry for several years. We are also members of the Council of Churches and the Schuylkill Association.

St. Mark's: We participate in the Council of Churches, Thanksgiving Eve Services, Food Pantry, Monthly Newsletter and Financial aid for those in need. We also have a Blue Christmas service that is open to the community.

If your congregation has a mission statement, how does that mission statement compare to the actual time spent engaging in different activities? Think of the range of activities from time spent gathering, to governance, to time spent going out.

St. John's: Our mission statement: As the body of Christ, we: Worship God, love others, share the good news, welcome all, and learn to follow Jesus. We strive to live our mission statement in our church and in our community. It is a constant work in progress.

St. Mark's: We follow our mission statement which is: The allowed purpose of this church shall be to worship God, to preach the gospel of Jesus Christ and to celebrate the Sacraments: to realize Christian fellowship and unity within this church and the church universal, to render loving services toward mankind: and to strive for righteousness, justice and peace.

Reflect on the scope of work assigned to your pastor(s). How is their community ministry and their ministry in and on behalf of the wider church accounted for in the congregation's expectations on their time?

St. John's: While we would be supportive of the pastor's involvement in the Wider Church where they would feel called, our priority at this time would be involvement in the Local Church and our community.

St. Mark's: We will be supportive and expect the pastor to be involved in the Wider Church. Level of involvement will be open to discussion with consistory.

4b. MISSION InSite

Comment on your congregation's MissionInSite report with data for your neighborhood(s) or area. What trends and opportunities are shown?

St. John's: We are located in the downtown area of a small town. We are on the main street in the business area. There are more lower economic individuals and families moving into the area because of the rental opportunities and possibilities.

St. Mark's: Trends: Aging population, shrinking population, limited economic opportunities, population predominately white/non-Hispanic and population predominately aging.

Opportunities: Many distribution centers – warehouse and service related jobs.

How do your congregation's internal demographics compare or contrast to a) the neighborhoods adjacent to your church, and b) other neighborhoods with which your church connects?

St. John's: Our church is not ethnically diverse as the town and our neighborhood has a younger population than our congregation. But we welcome everyone at St. John's.

St. Mark's: Population in our church is predominately an older population, but opportunities exist in the community for evangelism to younger families.

How are the demographics of the community currently shaping ministry, or not?

St. John's: Because of our location in town and our large front lawn, we are able to have activities for the town. We have a free clothing giveaway twice a year on the front lawn and we participate in the townwide Borough Day activities and the townwide yard sale. We also participate in the town food pantry.

St. Mark's: We are constantly searching for ways to better connect to our community in ministry.

What do you hear when you talk to community leaders and ask them what your church is known for?

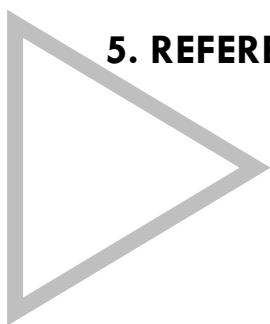
St. John's: We have a beautiful setting and a beautiful stone building with a large lawn on Main Street. We are the church that has the clothing giveaways and the basket raffle on Borough Day.

St. Mark's: We are known for pie and candy making, we share our church home with other community groups to host meetings. We are a well-cared for, handicapped accessible church with an open door to the community.

What do new people in the church say when asked what got them involved?

St. John's: They either knew someone here at St. John's or related to someone in the congregation. Some people were not happy at a previous church and came to St. John's. Some people had left our church and came back. Our location is also a positive aspect.

St. Mark's: We are a welcoming congregation, open and accepting to all.



5. REFERENCES

Name up to three people who have agreed to serve as phone and written references. Advise the three references: "The contact information you provide may be shared publicly. Please use contact information that you feel comfortable giving to candidates so they can reach you with their questions."

Make sure they are not members of your church but are persons who know your church well enough to be helpful to candidates seeking more information. Request a letter from each reference in answer to the four prompts below. Attach the letters (up to three) as desired.

REFERENCE 1

Name / Position / Setting

(Telephone / Email / Relationship to the Congregation)

St. John's: Debra Hoy/Organist at Red Church, Orwigsburg, PA

[570-640-8957](tel:570-640-8957) / dahoy@comcast.net/ [Substitute](#) Organist

St. Mark's : Mary Lowe 570-874-3052 / lowe508@ptd.net

Mary is not a member but is married to a member of St. Mark's and is involved with the choir.

REFERENCE 2

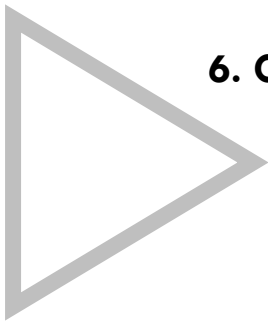
Name / Position / Setting

(Telephone / Email / Relationship to the Congregation)

REFERENCE 3

Name / Position / Setting

(Telephone / Email / Relationship to the Congregation)



6. CLOSING THOUGHTS

- a. CLOSING PRAYER
- b. STATEMENT OF CONSENT
- c. CONFERENCE/ASSOCIATION VALIDATION

6a. CLOSING PRAYER

Include here any prayer or dream for the minister you imagine journeying toward you... a poem, for example, or a Scripture passage or a piece of music that is meaningful to your Search Committee:

Gracious and loving God – be with us as we search for a new pastor. Help us to keep an open mind, remembering that as we are all different and so is each pastor. We need someone to remind us why we here: to worship YOU! Help us in our search. Amen.

6b. STATEMENT OF CONSENT

The covenantal relationship between a church and those called by that church to serve as pastors and teachers and in other ministerial positions is strengthened when vital information is openly shared by covenantal partners. To that end, we attest that, to the best of our abilities, we have provided information in this profile that accurately represents our church. We have not knowingly withheld any information that would be helpful to candidates.

As the committee charged with the responsibility for identifying and recommending suitable new minister for our church, we have been authorized to share the information herein with potential candidates. We understand that a candidate may wish to secure further knowledge, information, and opinions about our church. We encourage a candidate to do so, recognizing that an open exchange of relevant information builds the foundation for continuing and healthy relationships between calling bodies and persons seeking a ministry position.

1. Which individuals and groups in the church contributed to the contents of this Local Church Profile? (*for example, church council or consistory, transition team, etc.*)

St. John's: The Search and Call Team

Consistory President

Director of Music

Treasurer

St. Mark's: The Search and Call Team

Consistory President

Director of Music

Treasurer

Church Secretary

Congregation

2. Additional comments for interpreting the profile:

Signed:

Name: Susan Gipe

Title: Search & Call Liaison

Date: October 29, 2025

6c. VALIDATION BY CONFERENCE/ASSOCIATION

The congregation is currently in good standing with the association / conference named.

Staff Comment:

To the best of my knowledge, ministerial history information is complete.

Staff Comment:

To the best of my knowledge, available church financial information is presented thoroughly.

Staff Comment:

My signature below attests to the above three items.

Signature:



Name / Title:

Rev. Kevin McLemore

Email:

mclmore@psec.org

Phone:

773-717-0029

Date:

November 20, 2025

**UNITED CHURCH
OF CHRIST**



This document is created through support to Our Church’s Wider Mission (OCWM) and is only possible through the covenantal relationships of all settings of the United Church of Christ.

“Jesus answered them, ‘Have faith in God!’” – Mark 11:22

Shared Ministry Covenant
St. Johns UCC Schuylkill Haven
St. Marks UCC Cressona

Concept of Shared Ministry:

A Shared Ministry Covenant between St. Marks UCC Cressona PA and St. Johns UCC Schuylkill Haven allows the two congregations to share a full-time pastor. The Pastor will minister to both congregations without compromising the integrity of either. The Pastor will serve both congregations without exhibiting preference to one over the other. Both congregations, while sharing a pastor, will maintain their own consistories, finances, identity and autonomy.

Shared Ministry Council:

The Shared Ministry Council will be composed of 6-8 voting members with an equal number from each congregation. The members will be appointed by each church Consistory from the Consistory or congregation and will serve for a 2-year term. No member may serve more than 3 consecutive terms. The Shared Ministry Council should meet quarterly. The Council will meet at the home congregation of the council president, so the location will move between the congregations from year to year. The officers of the Shared Ministry Council will be President, Vice President, and Secretary. The president and the vice president shall be from different congregations. All officers will be elected annually by a simple majority of the Ministry Council. The office of President will rotate between the two congregations on a yearly basis. The Shared Ministry Council will provide oversight on behalf of the two congregations in the areas of pastoral compensation, expectations, concerns, and mutual ministries that take place between the two congregations.

Finances:

St. Johns UCC will reimburse St. Marks UCC for 50% of the Pastor's salary and 50% of all benefits.

Please see “Financial Blueprint—Shared Ministry” for details

Each church will maintain its own complete financial responsibility for all expenses,
fiscal records, upkeep, benevolences and obligations.

Time of Sunday Morning Worship Services:

St. Johns UCC: 9 am

St. Marks UCC: 10:30 am

Special services and activities for both churches to be considered may include but are not limited to:

Lenten and Easter Services, Christmas Services, Vacation Bible School, special musical offerings, Bible Studies and other educational opportunities.

Office Hours:

It will be necessary for the pastor to have some set office hours for each congregation. The time for such hours will be determined by each Consistory in consultation with the Pastor.

Christian Education Programs:

An important part of the Pastor's job is to instruct candidates for confirmation. The Pastor should work closely with the Christian Education committees of both congregations to determine the schedule and frequency of the Confirmation program.

Joint Children/Youth Ministries could include: Confirmation classes, Vacation Bible School, and Youth Group meetings and programs.

Pastoral Compensation and Insurances:

Payroll is scheduled for the second and fourth Fridays of the month for a total of twenty-four (24) payroll dates in a year. The week prior to a scheduled payroll date the treasurer of St. Mark's shall submit to St. John's a list detailing the St. John's share of the components of the pastor's compensation (salary with housing allowance, pension [annuity], life/disability insurance, Social Security allowance) as well as insurance costs (medical and dental). Since there are twenty-four (24) payroll dates, the components of the pastor's compensation and insurance costs will be reimbursed to St. Mark's divided into twenty-four installments. St. John's will then issue a check made payable to St. Mark's United Church of Christ to cover St. John's share of the costs of the pastoral ministry by the date of the scheduled payroll.

Pastor will be responsible to keep track of mileage accrued for each congregation and submit them to the respective church treasurer for reimbursement. Mileage will be reimbursed at the current recommended rate from the IRS.

Disagreements:

If a church member has a concern about the Shared Ministry covenant, that concern should first be brought to the Consistory of the appropriate congregation. If the Consistory is unable to resolve the concern, it should then be brought to the Shared Ministry Council. If the Shared Ministry Council is not able to resolve the concern, the guidance of the Office of the Conference Minister of PSEC or the guidelines of the denominational by-laws will be used.

Dissolution of the Covenant:

The Shared Ministry Covenant and appropriate Call Documents may be dissolved with appropriate congregational action as defined in the Constitution and by-laws of St. Johns and St. Marks. Pastor shall inform both congregations of a planned departure 90 days prior to the effective date.

If one congregation is no longer financially able to continue the covenant, the covenant will be dissolved. If the covenant is dissolved, both congregations are relieved of financial responsibility. The other congregation may choose to seek suitable arrangements with Pastor.

In the occasion of a pastoral vacancy, the congregations may choose to join together to seek pastoral leadership. They also may choose to search separately.

Modifications to the Shared Ministry Covenant:

The Shared Ministry Council may recommend changes to this agreement at any time, in consultation with the Pastor, Association and Office of the Conference Minister.

Such planned changes should be referred to the congregations' Consistory which will arrange to have them considered at congregational meetings. Approval by two-thirds majority vote of those in attendance at each congregational meeting shall be necessary to activate or modify the covenant.

This covenant becomes effective immediately following approval by St. Johns and St. Marks at properly convened congregational meetings.

Signed this day, _____ of 20__.

Consistory Chair of Church A

Consistory Chair of Church B

Pastor

St. John's UCC
2026 BUDGET

INCOME							
	2023	2023	2024	2024	2025	Through	2026
	Budget	Actual	Budget	Actual	Budget	8/31/2025	Proposed
Christmas & Easter Offerings	\$ 3,000.00	\$ 1,960.00	\$ 3,000.00	\$ 4,243.00	\$ 3,000.00	\$ 1,975.00	\$ 3,000.00
Endowment Funds	\$ 600.00	\$ 600.00	\$ 600.00	\$ 600.00	\$ 600.00	\$ 450.00	\$ 600.00
Fuel Envelopes	\$ 6,000.00	\$ 5,684.00	\$ 6,000.00	\$ 4,978.00	\$ 6,000.00	\$ 3,595.00	\$ 6,000.00
Fundraising Proceeds	\$ 12,000.00	\$ 11,643.85	\$ 12,000.00	\$ 11,781.77	\$ 12,000.00	\$ 1,027.15	\$ 12,000.00
Flower & Bulletin Sponsors	\$ 2,000.00	\$ 1,435.00	\$ 1,500.00	\$ 1,659.50	\$ 1,500.00	\$ 1,012.00	\$ 1,500.00
Interest	\$ 5.00	\$ 4.94	\$ 5.00	\$ 11.53	\$ 5.00	\$ 13.12	\$ 10.00
Loose Plate	\$ 500.00	\$ 1,728.00	\$ 500.00	\$ 1,806.50	\$ 1,000.00	\$ 2,243.00	\$ 1,000.00
Hall Rental	\$ 300.00	\$ 375.00	\$ 300.00	\$ 1,650.00	\$ 300.00	\$ 25.00	\$ 100.00
Weekly Envelopes	\$ 82,000.00	\$ 75,171.00	\$ 82,000.00	\$ 86,136.00	\$ 82,000.00	\$ 54,111.00	\$ 82,100.00
Budget Line Items	\$ 1,000.00	\$ 900.00	\$ 1,000.00	\$ 50.00	\$ -	\$ 100.00	\$ 100.00
Other Envelopes: i.e. Lent	\$ 2,000.00	\$ 4,758.00	\$ 2,500.00	\$ 1,875.00	\$ 2,000.00	\$ 1,488.00	\$ 1,500.00
INCOME TOTALS	\$ 109,405.00	\$ 104,259.79	\$ 109,405.00	\$ 114,791.30	\$ 108,405.00	\$ 66,039.27	\$ 107,910.00
EXPENSES							
	2023	2023	2024	2024	2025	Through	2026
	Budget	Actual	Budget	Actual	Budget	8/31/2025	Proposed
ADMINISTRATION							
101 Salary Package Pastor	\$ 36,472.00	\$ 39,262.56	\$ 37,972.00	\$ 28,954.57	\$ 37,972.00	\$ -	\$ 37,975.00
103 Annuity Package Pastor	\$ 5,107.00	\$ 5,123.72	\$ 5,316.00	\$ 3,322.50	\$ 5,316.00	\$ -	\$ 5,315.00
104 Life & Disability Pastor	\$ 547.00	\$ 549.06	\$ 570.00	\$ 379.68	\$ 570.00	\$ -	\$ 570.00
105 Health Insurance Pastor	\$ 12,575.00	\$ 12,607.28	\$ 12,965.00	\$ 8,643.04	\$ 12,965.00	\$ -	\$ 12,965.00
Pastor/Parsonage Package Sub-total	\$ 54,701.00	\$ 57,542.62	\$ 56,823.00	\$ 41,299.79	\$ 56,823.00	\$ -	\$ 56,825.00
107 Mileage	\$ 500.00	\$ -	\$ 500.00	\$ -	\$ 500.00	\$ -	\$ 500.00
109 Secretary Salary	\$ 5,075.00	\$ 5,075.00	\$ 5,280.00	\$ 5,127.69	\$ 5,385.00	\$ 3,521.04	\$ 5,500.00
110 Organist Salary	\$ 4,125.00	\$ -	\$ 4,125.00	\$ 4,275.00	\$ 3,500.00	\$ 3,000.00	\$ 4,000.00
110a Music Director Salary	\$ 3,865.00	\$ 3,865.00	\$ 4,020.00	\$ 4,020.00	\$ 4,100.00	\$ 2,680.73	\$ 4,200.00
112 Sexton Salary	\$ 6,000.00	\$ 6,200.00	\$ 5,000.00	\$ 4,200.00	\$ 5,000.00	\$ 2,100.00	\$ 4,000.00
113 Treasurer Gift	\$ 600.00	\$ 600.00	\$ 800.00	\$ 800.00	\$ 800.00	\$ -	\$ 800.00
115 Tax Liabilities	\$ 3,464.00	\$ 709.24	\$ 3,620.00	\$ 697.47	\$ 725.00	\$ 473.45	\$ 750.00
116 Church Electric	\$ 2,400.00	\$ 1,936.09	\$ 2,000.00	\$ 1,844.43	\$ 2,000.00	\$ 1,183.58	\$ 2,000.00
118 Church Water/Sewer	\$ 425.00	\$ 481.40	\$ 425.00	\$ 519.65	\$ 520.00	\$ 394.35	\$ 590.00
120 Church Telephone	\$ 1,500.00	\$ 2,315.09	\$ 1,500.00	\$ 2,445.34	\$ 2,350.00	\$ 1,955.39	\$ 3,200.00
121 Church Fuel Oil	\$ 19,000.00	\$ 13,196.00	\$ 15,000.00	\$ -	\$ 15,000.00	\$ 20,025.96	\$ 15,000.00
123 Oil Burner Maintenance	\$ 425.00	\$ -	\$ 425.00	\$ -	\$ 425.00	\$ 325.63	\$ 425.00
125 Church Insurance	\$ 7,500.00	\$ 7,294.77	\$ 7,500.00	\$ 7,526.00	\$ 7,500.00	\$ 5,193.32	\$ 7,800.00
126 Staff Christmas Gifts	\$ 450.00	\$ 450.00	\$ 450.00	\$ 450.00	\$ 450.00	\$ -	\$ 450.00
127 Conference Delegates	\$ 100.00	\$ -	\$ 100.00	\$ -	\$ 100.00	\$ -	\$ 100.00
128 Contributions	\$ 50.00	\$ 50.00	\$ 50.00	\$ 50.00	\$ 50.00	\$ 50.00	\$ 50.00
130 Miscellaneous	\$ -	\$ -	\$ -	\$ -	\$ -	\$ -	\$ -
131 Supply Pastors	\$ 600.00	\$ 4,725.00	\$ 600.00	\$ 1,650.00	\$ 600.00	\$ 2,550.00	\$ 600.00
ADMINISTRATION TOTALS	\$ 110,780.00	\$ 104,440.21	\$ 108,218.00	\$ 74,905.37	\$ 105,828.00	\$ 43,453.45	\$ 106,790.00
WORSHIP & MUSIC							
201 Communion Supplies	\$ 100.00	\$ 119.90	\$ 100.00	\$ -	\$ 100.00	\$ 15.98	\$ 100.00
203 Palms/Misc.	\$ 35.00	\$ -	\$ 35.00	\$ -	\$ 35.00	\$ -	\$ 35.00
204 Flowers & Worship Bulletins	\$ 2,000.00	\$ 1,759.65	\$ 1,500.00	\$ 1,372.95	\$ 1,500.00	\$ 913.85	\$ 1,500.00
205 Organ & Piano	\$ 250.00	\$ -	\$ 300.00	\$ 607.42	\$ 700.00	\$ 395.00	\$ 700.00
206 Other/Music	\$ 400.00	\$ 190.58	\$ 200.00	\$ 290.00	\$ 200.00	\$ -	\$ 200.00
WORSHIP & MUSIC TOTALS	\$ 2,785.00	\$ 2,070.13	\$ 2,135.00	\$ 2,270.37	\$ 2,535.00	\$ 1,324.83	\$ 2,535.00

EXPENSES							
	2023	2023	2024	2024	2025	Through	2026
	Budget	Actual	Budget	Actual	Budget	8/31/2025	Proposed
OUTREACH							
405 Social Supplies	\$ 100.00	\$ 82.49	\$ 100.00	\$ 38.97	\$ 100.00	\$ -	\$ 100.00
407 Webpage	\$ 200.00	\$ 279.84	\$ 300.00	\$ 385.83	\$ 300.00	\$ 368.88	\$ 400.00
OUTREACH TOTALS	\$ 300.00	\$ 362.33	\$ 400.00	\$ 424.80	\$ 400.00	\$ 368.88	\$ 500.00
STEWARDSHIP							
601 Offering Envelopes	\$ 930.00	\$ 953.57	\$ 930.00	\$ 1,034.86	\$ 1,000.00	\$ 755.06	\$ 1,100.00
STEWARDSHIP TOTALS	\$ 930.00	\$ 953.57	\$ 930.00	\$ 1,034.86	\$ 1,000.00	\$ 755.06	\$ 1,100.00
JANITORIAL							
801 Paper Supplies	\$ 100.00	\$ 66.46	\$ 100.00	\$ 42.80	\$ 100.00	\$ -	\$ 100.00
802 Cleaning Supplies	\$ 100.00	\$ -	\$ 100.00	\$ -	\$ 100.00	\$ -	\$ 100.00
JANITORIAL TOTALS	\$ 200.00	\$ 66.46	\$ 200.00	\$ 42.80	\$ 200.00	\$ -	\$ 200.00
OFFICE							
901 Paper Supplies	\$ 300.00	\$ 74.95	\$ 200.00	\$ 196.90	\$ 200.00	\$ 56.99	\$ 200.00
904 Postage	\$ 300.00	\$ 378.00	\$ 400.00	\$ 408.00	\$ 400.00	\$ 458.00	\$ 500.00
905 General Supplies	\$ 150.00	\$ 62.98	\$ 150.00	\$ -	\$ 150.00	\$ 197.06	\$ 150.00
907 Machine Maintenance	\$ 1,700.00	\$ 1,335.14	\$ 1,500.00	\$ 1,391.00	\$ 2,000.00	\$ 1,600.00	\$ 2,000.00
908 Petty Cash	\$ 100.00	\$ -	\$ -	\$ -	\$ -	\$ -	\$ -
909 Other	\$ -	\$ 169.99	\$ -	\$ -	\$ -	\$ -	\$ -
OFFICE TOTALS	\$ 2,550.00	\$ 2,021.06	\$ 2,250.00	\$ 1,995.90	\$ 2,750.00	\$ 2,312.05	\$ 2,850.00
O.C.W.M.							
1000 OCWM Commitment	\$ 500.00	\$ 504.00	\$ 500.00	\$ 500.00	\$ 500.00	\$ 330.00	\$ 500.00
EXPENSE TOTALS	\$ 118,045.00	\$ 110,417.76	\$ 114,633.00	\$ 81,174.10	\$ 113,213.00	\$ 48,544.27	\$ 114,475.00
SUMMARY							
INCOME TOTALS	\$ 109,405.00	\$ 104,259.79	\$ 109,405.00	\$ 114,791.30	\$ 108,405.00	\$ 66,039.27	\$ 107,910.00
EXPENSE TOTALS	\$ 118,045.00	\$ 110,417.76	\$ 114,633.00	\$ 81,174.10	\$ 113,213.00	\$ 48,544.27	\$ 114,475.00
PROFIT (DEFICIT)	\$ (8,640.00)	\$ (6,157.97)	\$ (5,228.00)	\$ 33,617.20	\$ (4,808.00)	\$ 17,495.00	\$ (6,565.00)

SAINT MARK'S UNITED CHURCH OF CHRIST

Expense Projections 2025

	<u>2024</u>	<u>2025</u>
BENEVOLENT MINISTRIES:		
OCWM	8,700.00	8,700.00
Designated Fund Raising Income (5%)	1,075.00	1,150.00
Designated Seasonal Offerings	<u>1,800.00</u>	<u>1,440.00</u>
	\$11,575.00	\$11,290.00
PROFESSIONAL/SUPPORT STAFF:		
Pastoral Ministry	122,555.00	124,179.00
Support Staff	54,037.00	54,837.00
Payroll Service	<u>2,000.00</u>	<u>2,000.00</u>
	\$178,592.00	\$181,016.00
CARE/MAINTENANCE OF GOD'S HOUSE:		
Electricity	5,750.00	6,000.00
Heating Oil	10,000.00	8,000.00
Water	350.00	350.00
Sewer/Sanitation	1,260.00	1,260.00
Telephone/Internet	2,280.00	2,865.00
Property Insurance	16,000.00	14,500.00
Repairs and Improvements	1,500.00	750.00
Pest Control/Property Supplies	1,000.00	850.00
AC Maintenance/Elevator Testing	850.00	850.00
Annual Fire Alarm Monitoring/Inspection	1,200.00	1,200.00
Organ/Piano Maintenance	<u>2,400.00</u>	<u>2,400.00</u>
	\$42,590.00	\$39,025.00
PROGRAM MINISTRIES:		
Social Awareness	250.00	200.00
Worship	2,100.00	1,680.00
Education	700.00	560.00
Fellowship	125.00	100.00
Stewardship	2,500.00	2,000.00
Family/Youth	500.00	400.00
	\$6,175.00	\$4,940.00
OFFICE EXPENSES:	\$5,600.00	\$5,040.00
TRANSFER -- INVESTMENT/CD INCOME TO SAVINGS:	\$4,600.00	\$5,075.00
MISCELLANEOUS: (Meeting Registrations)	\$825.00	\$500.00
CAPITAL IMPROVEMENT FUND	\$12,400.00	\$6,000.00
TOTAL PROJECTED EXPENSES:	\$262,357.00	\$252,886.00

Updated 10/15/2024

SAINT MARK'S UNITED CHURCH OF CHRIST
Cressona, Pennsylvania 17929

FINANCIAL REPORT -- 2024

RECEIPTS

CONTRIBUTIONS:		
Envelopes -- Operating	115,548.00	
Envelopes -- Property Improvement	14,582.50	
Envelopes -- Ensuring Our Future	6,332.50	
Envelopes -- Initial	580.00	
Seasonal Offerings*	11,063.00	
Loose Plate Offerings	2,889.01	
Capital Improvement Fund		\$150,995.01
SHARED MINISTRY -- ST. JOHN'S U.C.C		\$41,299.79
INVESTMENT INCOME:		\$14,673.32
FUND RAISING INCOME:**		\$31,016.50
MEMORIALS:		\$40,239.62
MINISTRY INCOME:		
Designated Benevolences***	1,925.00	
Other****	5,064.34	\$6,989.34
MISCELLANEOUS:		
Flowers	1,440.21	
Lay Fellowship	1,353.00	
Use of Hall/Decorations	500.00	
Bulletins	135.00	
Miscellaneous	339.82	\$3,768.03
TOTAL INCOME -- 2024		\$288,981.61
TRANSFERS FROM SAVINGS		\$158,588.37
TOTAL RECEIPTS -- 2024		\$447,569.98

* includes Advent and Lenten Offerings, Easter and Christmas Offerings, and Christmas in July Offering.

** includes Candy Sales, Annual Bake Sale, Soup Sale and Other

*** includes OGHS, Strengthen the Church, NIN, the Christmas Fund.

**** includes Seasonal Offerings for Benevolences, the Blanket Fund, the Food Pantry, Disaster Relief, GISS, the Food Pantry, the Utility Fund, Emergency Buckets, Disaster Relief Fund, and CROP Walk.

EXPENDITURES

BENEVOLENT MINISTRIES:		
Our Church's Wider Mission	8,700.00	
Designated Benevolences	3,062.50	
Other	4,263.65	\$16,026.15

CARE/MAINTENANCE OF GOD'S HOUSE:

Property Improvements/Repairs	45,942.84	
Property Insurance/Fire Alarm System	16,727.00	
Utilities	15,870.95	
Elevator Testing and License	4,642.25	
Organ/Piano Maintenance	3,010.00	
Pest Control and Supplies	857.78	\$87,050.82

FUND RAISING:

\$5,090.80

MEMORIAL GIFTS:

\$36,821.66

MISCELLANEOUS:

Purchase of Certificates of Deposit	75,000.00	
Flowers	1,463.91	
Choir Fund	747.48	
Other	450.62	\$77,662.01

OFFICE EXPENSES:

New Equipment//Maintenance/Contracts	2,741.43	
Administration/Supplies	1,846.52	
Mailing Expense	1,309.68	\$5,897.63

PROFESSIONAL AND SUPPORT STAFF:

Pastoral Ministry	84,147.19	
Ministry Staff	53,526.67	
Payroll Service	2,051.00	\$139,724.86

PROGRAM MINISTRIES:

Educational Ministries	72.51	
Lay Fellowship		
Social Awareness	125.00	
Stewardship Ministries	1,791.80	
Worship	2,325.08	\$4,314.39

TRANSFERS TO SAVINGS:

\$82,058.01

TOTAL EXPENSES -- 2024**\$454,646.33****SUMMARY**

Checking Account Balance, January 1, 2024	\$23,268.11
Receipts	\$447,569.98
Expenditures	-454,646.33
Checking Account Balance, December 31, 2024	\$16,191.76
Operating Fund Balance	\$12,098.31
Property Improvement Fund Balance	\$4,093.45

INVESTMENT AND SAVINGS ACCOUNTS

Franklin Income Fund/Certificates of Deposit/J.P. Morgan Fund	390,558.69
Commercial Savings Account	<u>28,675.10</u>
TOTAL INVESTMENT + SAVINGS ACCOUNT	\$419,233.79

RESERVE/STAINED GLASS WINDOW/PASTORAL MINISTRY FUNDS

Operating/Property Improvement Fund Reserve	\$60,427.10
Stained Glass Window Fund	\$104,408.96
Pastoral Ministry Fund	\$17,226.00

*Robert R. Hepler***Treasurer**

SAINT MARK'S UNITED CHURCH OF CHRIST

Income Projections 2025

<u>Contribution Income</u>	<u>2024</u>	<u>2025</u>
Initial/Operating Fund Envelopes	127,400.00	117,400.00
Property Improvement Fund	18,000.00	14,000.00
Capital Improvement Fund/Ensuring Our Future	8,500.00	4,000.00
Seasonal Offerings -- Operating Fund/PIF Fund	7,000.00	6,500.00
Seasonal Offerings -- Designated Benevolences	1,800.00	1,650.00
Loose Plate Offering	2,500.00	2,000.00
Sunday School Offering		
	\$165,200.00	\$145,550.00
 <u>Other Income</u>		
Shared Ministry Income from St. John's	59,728.00	60,540.00
Fund Raising Income	21,500.00	22,500.00
Franklin Income Fund (Investments)/CD's/MMA	15,200.00	14,000.00
Miscellaneous	750.00	750.00
	\$97,178.00	\$97,790.00
TOTAL INCOME	\$262,378.00	\$243,340.00

Compensation/Benefits

Pastoral Ministry (6% Increase in Insurances)

	<u>2024</u>	<u>2025</u>
Salary/Housing (Shared)	75,944.00	75,944.00
Social Security (Shared)	5,810.00	5,810.00
Pension (Shared)	10,632.00	10,632.00
Insurances (Shared)	27,069.00	28,693.00
Mileage (St. Mark's)	2,000.00	2,000.00
Professional Development (St. Mark's)	500.00	500.00
	\$121,955.00	\$123,579.00
Pulpit Supply (St. Mark's)	600.00	600.00
TOTAL PACKAGE	\$122,555.00	\$124,179.00

Support Staff (1.5% Increase)

Administrative Assistant	18,436.00	18,713.00
Coordinator of Music Ministries	20,522.00	20,830.00
Financial Secretary	2,321.00	2,356.00
Treasurer	1,159.00	1,176.00
Custodian	5,826.00	5,914.00
Social Security	3,693.00	3,748.00
Vacation (Organist)	900.00	900.00
Continuing Education	80.00	100.00
Worker's Compensation	1,100.00	1,100.00
TOTAL PACKAGE	\$54,037.00	\$54,837.00

Updated 10/15/2024

References for St. John's UCC, Schuylkill Haven, PA 17972

Deborah Hoy/Organist/St. John's UCC

(570) 640-8957 dahoy@comcast.net

Substitute Organist - 2x monthly and sometimes for special services

I am currently the organist for my home congregation Zion's Red Church, Orwigsburg, PA. I play at St. John's 9:00 a.m. worship service and accompany the choir twice a month. I have assisted them monthly for 6 years. I do help on occasional special services like Maundy Thursday when days/times do not conflict with my own church's services.

Some strengths that I see in the church's ministry are that they are a very welcoming, friendly congregation. They have strong leadership who are open to discussion/adoption of new ideas that would augment their current worship and outreach to the surrounding community. They record their Sunday services and place them on their Facebook page for shut-ins and the public to view.

Volunteers step up to lead the service or present a sermon when no substitute minister is available. I have been there for some of the messages and they are meaningful, relevant, and well prepared. Some of the leaders of the services are active church board members or perform other duties at the church.

They have an active senior choir that performs Sundays and for holiday services. Their bell choir plays usually once a month. Adult Sunday School is offered on the second and fourth Sundays.

St. John's participates in combined cantatas at Christmas and Easter, with St. Mark's UCC in Cressona (*their shared ministry partner.*) St. Mark's and St. John's combine for a week-long summer Bible school for their youth and is open for the surrounding community.

Some local activities and support include a free clothing giveaway in both fall and spring. They donate to the food pantry, support breast cancer research, Locust Lake ministry, Avedum (*supporting local students with mental health issues*), SPCA, and Avenues (*Programs that empower individuals with disabilities through support, employment, and community programs.*)

This summer many cases of water were collected for the local fire company. The congregation tries to "give back" to their community whenever there is a need.

**There is much more information on their impressive and current website at <https://www.stjohnsreformed.com/>

The only thing I can offer for consideration would be to think of ways to invite/encourage families with young children and teens to visit St. John's on a Sunday. I know more traditional churches struggle with lack of attendance for worship in that demographic, my own church included. Activities, sports, and other events seem to take precedence instead of connecting with God, learning about Jesus, and feeding your spirit. Perhaps St. John's could offer a Junior Church one or two times a month for any younger children that would come. Depending on the ages they could have a story, related crafts, songs, and other activities. As in a lot of churches that would probably fall on the leaders and volunteers that are already giving of their time and talents.

I can't think of one overall significant experience that I have had with this church's ministry. However, their former pastor was very helpful when I volunteered to compose my church's bulletins when Zion's pastor took another position. He mentioned some resources that I found very helpful (*The Abingdon Worship Annuals*) and offered to answer any questions. As a lay person, I really appreciated his suggestions and guidance.

Rev. Mark Dewald preaches a lot of the Sundays I am there and I find his messages engaging and inspirational. In addition, I have always felt very welcome and at home in their congregation.

I wish them well in connecting with the right pastor to move them forward in their spiritual journey.

Mary Ellen Lowe
146 North 4th Street
Frackville PA 17931
(570) 874-3052 (Home)
(570) 527-6480 (Cell)
lowe508@ptd.net (Home)

Prior to answering any questions, I must share with you that I am a practicing Catholic by baptism and confirmation. Over 40 years ago I married Tom, a Presbyterian who became a St. Mark's UCC member about 5 years ago. We both attend my parish church every Saturday night and then attend Sunday morning services at St. Mark's.

1: Describe some areas of strength in St. Mark's ministry.

St. Mark's possesses strengths that I value highly. The congregants are friendly and welcoming! During our many years of sporadically attending Sunday morning services and other events, everyone has always welcomed us with open arms through the spirit of friendship & fellowship. We consider many of the St. Mark's members, true and loyal friends.

The greatest area of strength is by far, its **MUSICAL MINISTRY** program! Both Tom and I have been a part of the Senior Choir for 30+ years. We are so happy to be considered as part of their musical family. The Senior Choir, which consists of church members and friends, is the best church choir we have ever been part of. The music ministry does not only consist of the Senior Choir, but also various solo voice & instrumentalists, and a Senior Bell Choir too. I must also give a BIG shoutout to Lee Ferrier, the Director of Musical Ministry at St. Marks. He is the glue that holds everything together. He ranks as one of the best Choir Directors that I ever had to opportunity to sing and perform with.

2: Describe some areas for improvement in St. Mark's ministry.

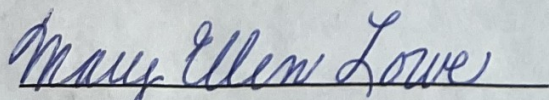
In all honestly, I cannot think of any specific deficiencies with St. Mark's ministry.

3: Describe a significant experience you have had at St. Mark's ministry.

As noted earlier, both Tom and I are singers. Forty years ago when the choir was purchasing new choir robes, St. Mark's purchased robes for us both. What a thoughtful thing they did for us! They made us feel part of the Senior Choir family. They also purchased our own personally engraved church hymnals too.

4: Anything else you wish to share.

The congregation accepted me as a FRIEND many, many years ago and they have always made me feel welcome and comfortable! I consider the members of St. Mark's UCC Church my family.


Mary Ellen Lowe

**UNITED CHURCH OF CHRIST
ELEVEN YEAR CHURCH PROFILE BASED ON DATA REPORTED IN UCC
YEARBOOKS**



Church#: 601850

Assoc: 636 **Schedule:** 0 Saint John's UCC Schuylkill Haven PA 17972

YEAR	MEMBERS	AVG WEEKLY ATTENDANCE	CHR ED/ FAITH FORM	CONFIRMATION	CONFESSION	TRANSFER OR REAFFIRM	DEATHS OR TRANS OUT	OTHER LOSSES	NET MEMBS ADDS-REMOVED
2013	192	64	29	0	0	0	8	52	-60
2014	196	67	28	5	0	4	5	1	3
2015	196	67	28	0	0	0	0	0	0
2016	183	63	30	0	0	1	5	2	-6
2017	177	53	24	0	0	3	9	0	-6
2018	172	65	24	2	0	0	7	0	-5
2019	166	55	20	1	0	0	6	1	-6
2020	164	43	24	4	0	0	6	0	-2
2021	164	43	24	0	0	0	0	0	0
2022	164	43	24	0	0	0	0	0	0
2023	164	43	24	0	0	0	0	0	0

YEAR	CURRENT EXPENSES	CAPITAL PAYMENTS	BASIC SUPPORT	TOT OTHER UCC GIVING	TOTAL OCWM	OTHER GIFTS	WIDER MISSION	BASIC SUPP% CURR LOCAL	TOTAL EXPEND	PLEDGES AND OFFERINGS
2013	\$123,953	\$0	\$1,000	\$1,666	\$2,666	\$2,942	\$5,608	0.81	\$129,561	\$140,400
2014	\$112,094	\$3,400	\$1,000	\$3,243	\$4,243	\$1,916	\$6,159	0.89	\$121,653	\$91,628
2015	\$112,094	\$0	\$500	\$1,382	\$1,882	\$0	\$1,882	0.45	\$113,976	\$0
2016	\$117,176	\$23,694	\$500	\$1,594	\$2,094	\$3,350	\$5,444	0.43	\$146,314	\$163,316
2017	\$119,320	\$0	\$504	\$1,757	\$2,261	\$3,531	\$5,792	0.42	\$125,112	\$96,465
2018	\$119,965	\$0	\$504	\$1,610	\$2,114	\$4,544	\$6,658	0.42	\$126,623	\$89,148
2019	\$119,965	\$0	\$504	\$3,210	\$3,714	\$4,298	\$8,012	0.42	\$127,977	\$95,429
2020	\$120,792	\$0	\$504	\$2,699	\$3,203	\$5,500	\$8,703	0.42	\$129,495	\$99,617
2021	\$120,792	\$0	\$504	\$0	\$504	\$0	\$504	0.42	\$121,296	\$0
2022	\$120,792	\$0	\$504	\$150	\$654	\$0	\$654	0.42	\$121,446	\$0
2023	\$120,792	\$0	\$504	\$130	\$634	\$0	\$634	0.42	\$121,426	\$0

% CHANGE	MEMBERS	AVG WEEKLY ATTENDANCE	CHR ED/ FAITH FORM	TOTAL ADDITIONS	TOTAL REMOVALS	CURR LOCAL EXPENSES	TOTAL OCWM	TOTAL EXPENDITURE
2018-2023	-4.65	-33.85	0.00	-100.00	-100.00	0.69	-70.01	-4.10
2013-2023	-14.58	-32.81	-17.24	0.00	-100.00	-2.55	-76.22	-6.28

Please note: Zero values ("0" or "\$0") may reflect missing information in some years. Christian Education/Faith Formation refers to Church School Enrollment for all figures before 2007.

**UNITED CHURCH OF CHRIST
ELEVEN YEAR CHURCH PROFILE BASED ON DATA REPORTED IN UCC
YEARBOOKS**



Church#: 600260

Assoc: 636 **Schedule:** 0 Saint Mark's UCC Cressona PA 17929

YEAR	MEMBERS	AVG WEEKLY ATTENDANCE	CHR ED/ FAITH FORM	CONFIRMATION	CONFESSION	TRANSFER OR REAFFIRM	DEATHS OR TRANS OUT	OTHER LOSSES	NET MEMBS ADDS-REMOVED
2013	357	81	45	4	0	3	10	0	-3
2014	348	78	32	1	0	0	9	1	-9
2015	346	79	49	3	0	2	7	0	-2
2016	327	68	41	3	0	7	10	19	-19
2017	325	60	25	4	0	0	6	0	-2
2018	322	65	25	5	0	0	8	0	-3
2019	332	71	29	0	2	11	3	0	10
2020	333	35	15	7	0	0	6	0	1
2021	332	38	0	0	0	5	6	0	-1
2022	331	49	14	0	0	2	3	0	-1
2023	330	45	6	0	0	2	3	0	-1

YEAR	CURRENT EXPENSES	CAPITAL PAYMENTS	BASIC SUPPORT	TOT OTHER UCC GIVING	TOTAL OCWM	OTHER GIFTS	WIDER MISSION	BASIC SUPP% CURR LOCAL	TOTAL EXPEND	PLEDGES AND OFFERINGS
2013	\$171,324	\$9,779	\$7,585	\$4,342	\$11,927	\$1,459	\$13,386	4.43	\$194,489	\$164,108
2014	\$189,787	\$9,939	\$7,800	\$5,716	\$13,516	\$1,835	\$15,351	4.11	\$215,077	\$187,232
2015	\$242,012	\$0	\$8,100	\$3,143	\$11,243	\$2,366	\$13,609	3.35	\$255,621	\$183,733
2016	\$145,205	\$5,656	\$8,400	\$3,073	\$11,473	\$3,689	\$15,162	5.78	\$166,023	\$14,283
2017	\$151,395	\$6,285	\$6,210	\$4,198	\$10,408	\$2,724	\$13,132	4.10	\$164,527	\$142,033
2018	\$73,735	\$1,344	\$6,940	\$4,771	\$11,711	\$2,013	\$13,724	9.41	\$87,459	\$154,131
2019	\$181,234	\$4,797	\$7,505	\$4,584	\$12,089	\$3,791	\$15,880	4.14	\$197,114	\$161,179
2020	\$24,963	\$3,628	\$7,690	\$5,426	\$13,116	\$429	\$13,545	30.81	\$38,508	\$159,373
2021	\$286,348	\$0	\$7,800	\$7,023	\$14,823	\$3,200	\$18,023	2.72	\$304,371	\$175,330
2022	\$216,710	\$0	\$8,100	\$2,883	\$10,983	\$3,084	\$14,067	3.74	\$230,777	\$165,284
2023	\$237,147	\$0	\$8,400	\$6,036	\$14,436	\$4,158	\$18,594	3.54	\$255,741	\$166,904

% CHANGE	MEMBERS	AVG WEEKLY ATTENDANCE	CHR ED/ FAITH FORM	TOTAL ADDITIONS	TOTAL REMOVALS	CURR LOCAL EXPENSES	TOTAL OCWM	TOTAL EXPENDITURE
2018-2023	2.48	-30.77	-76.00	-60.00	-62.50	221.62	23.27	192.41
2013-2023	-7.56	-44.44	-86.67	-71.43	-70.00	38.42	21.04	31.49

Please note: Zero values ("0" or "\$0") may reflect missing information in some years. Christian Education/Faith Formation refers to Church School Enrollment for all figures before 2007.