

LOCAL CHURCH PROFILE



First United Church of Christ
Belleville, WI

Pastor

Southwest Wisconsin Association

[6/26/18]

LOCAL CHURCH PROFILE CONTENTS

Position Posting

Who Is God Calling Us To Become?

Who Are We Now?

Who Is Our Neighbor?

References

Consent and Validation

*"God is able to provide you with every blessing, so that
having all sufficiency in all things at all times,
you may abound in every good work."*

(2 Corinthians 9:8)

INSTRUCTIONS

The new Local Church Profile supports the calling and discernment of United Church of Christ congregations with their current or future pastoral leadership.

For many congregations, the interim time between ministers is an intentional season that is guided in part by the work of preparing a Local Church Profile. Through the Profile, the congregation can discover its data and express its story for the reliable discernment of a search committee and the beginning of a new pastorate. Searching ministers will want to see this document in its entirety.

The interim season is not the only time to give attention to questions and exploration of a congregation's vocation, however. Three sections of the Local Church Profile – WHO ARE WE NOW, WHO IS OUR NEIGHBOR, and WHO IS GOD CALLING US TO BECOME – are meant to be updated every 3-5 years. Known as the “Discovery Document,” these three sections can be completed by a visioning group, a governing body, a transition team, or other entity in the church – not just by a search committee – in order to draw forward the gifts and imaginative possibilities of a congregation. The more participants, the better!

Some questions are easy to answer. Some are not so easy. Prompts are provided to stimulate narrative response if needed; these *italicized* prompts are merely examples from which to choose or to inspire your own. Efforts to answer the questions will prompt conversations and explorations and storytellings and many prayers, and as the Spirit moves throughout the process, congregations will shape a collective articulation of Christ's leading (WHO IS GOD CALLING US TO BECOME). This last question to be answered becomes the first section to be read by searching ministers in the Local Church Profile, and it is boldest and most actionable piece for faithful leadership into the future.

Your conference can provide materials referenced in the Local Church Profile, such as the 11-Year Report containing data as reported by your congregation annually to the UCC Data Hub and MissionInsite reports containing demographic information on your community. More information on types of pastorate in the United Church of Christ can be found in the *Call Agreement Workbook*. Be sure to use the *Call Agreement Workbook's* Scope of Work to describe in this Local Church Profile the position being sought.

When it is time for ministerial search, the conference can counsel you on posting the Local Church Profile together with your public listing at UCC Ministry Opportunities (<http://oppsearch.ucc.org>).

The last page of the Local Church Profile contains a statement that parallels the consent statement signed by ministers in the UCC Ministerial Profile. In keeping with the covenantal relationship between a church and those it seeks to call, this statement encourages an open, honest exchange of information. On behalf of the United Church of Christ, and on the basis of the best knowledge available to them, your conference staff will validate your completed Local Church Profile when it is ready to be shared in relationship with prospective new leaders.

POSITION POSTING

LISTING INFORMATION

SCOPE OF WORK

COMPENSATION & SUPPORT

WHO IS GOD CALLING TO MINISTER WITH US?

LISTING INFORMATION

Church name: **First United Church of Christ**

Street address: **130 E. Church Street, Belleville, WI 53508**

Supplemental web links:

<http://bellevillefirstucc.org/wordpress2/>

<https://www.facebook.com/First-United-Church-of-Christ-Belleville-Wisconsin-217777518262204/>

Additional ecumenical affiliations: **N/A**
(*e.g. denominations, communions, fellowships*)

Conference: **Wisconsin Conference**

Association: **Southwest Wisconsin Association**

UCC Conference or Association Staff Contact Person

Name: **Joanne Thomson**

Title: **Associate Conference Minister**

Phone: **608-630-2992**

Email: **jthomson@wcucc.org**

Summary Ministry Description:

In a short paragraph, reflect on where your church is going and what it might look like when you get there. What do you need to get there? Who are you seeking to join you on this part of your church's faith journey?

First UCC is welcoming, connecting, reaching out in faith and love.....

Through Extravagant Welcome

- **To explore your faith**
- **To meet new people**

- To strengthen your personal relationship with God

We are on a journey, learning and exploring our faith. This is an evolving process. We are seeking our new Pastor, congregation and community to join us on our church's faith journey.

Photographs:

Insert 1 - 3 images of your church, its people, its parsonage or building or gathering space, etc.





What we value about living in our area:

We live in a growing village in Southern Wisconsin with a population of about 2,500 people. Belleville is a close-knit rural village with big city opportunities near by. Our local businesses include Duluth Trading Company, Belleville Clinic, Federal Industries, three banks, car dealership and a grocery store and pharmacy, just to name a few.

We are 20 miles from Madison, which is Wisconsin's capital. Madison is known for its beautiful capitol building, the University of Wisconsin college, University of Wisconsin Hospital, Clinics and Children's Hospital and a culture filled downtown area.

Current size of membership: **211 active members**

Languages used in ministry (*other than English*): **N/A**

Position Title: **Pastor**

Position Duration:

Settled – a called position intended for longer-term ministry in which the minister moves church membership to the congregation and moves standing to related association

Compensation Level:

Full Time

Does the total support package meet conference compensation guidelines?

Yes

SCOPE OF WORK

- **preparation and leadership of Sunday worship including scripture study, crafting of liturgy and bulletin, sermon preparation, guiding and sometimes finding lay liturgists, planning of music in coordination with musical staff or volunteers, preaching, offering of prayers, etc.**

- **faith formation and vitality through prayer, Bible study, service, identifying helpful resources and opportunities and helping lay persons take advantage of them**
- **leadership development by working with people in the church to create ministry and programs**
- **pastoral care in collaboration with lay people**
- **home, hospital and nursing home visits**
- **community engagement and leading the way for the church to be an ambassador of God's love**
- **weddings and funerals for participants in the worshipping community**
- **strategic planning for current and new directions in ministry**
- **attend meetings and give leadership as needed to church programs, in collaboration with lay leadership**
- **participate in wider church activities such as conference and association meetings**
- **administration responsibilities (unless delegated) such as email, website, church supply purchasing**
- **faithful financial development and stewardship**
- **responsibility for supervision of staff**
- **availability to wider community for funerals, weddings, special worship programs, and as a representative of the church to local organizations**
- **counseling, listening and referral**
- **study and prayer to increase faith and to improve skills so as to lead, teach, preach better**
- **energizing and deepening the spiritual connections and faith understandings of others in all they do**

Core Competencies:

This feedback came from our town hall discussions with our church members.

- 1. Leader: Someone that is a good teacher and is organized.**
- 2. People-person: Someone that has the ability to communicate with all ages and is a good listener.**
- 3. Visionary: Someone willing to guide our congregation towards the fruition of our hopes and dreams for church membership growth and community and widen world impact.**

COMPENSATION AND SUPPORT

\$55,000.00 - \$75,000.00 – This includes:

- salary
- housing allowance
- social security offset
- pension/annuity
- health insurance allowance
- disability/life insurance

This salary range is based on experience and education, this is negotiable.

In addition, our budget includes:

- continuing education/professional allowance (i.e., books, meetings)
- cellphone
- mileage allowance
- 4 weeks of vacation annually

What is the expected living situation for your next minister?

Our preference would be to live within the community; however, this is negotiable. We have a housing allowance that is part of the salary package. There is a loan available to be used for a down payment for a house.

Comment on the residential/commuting expectations for your next minister.

State any incentives:

We will revisit salary after probationary period.

Our church will provide a sabbatical leave of 3 months after 5 years of full-time ministry with our church.

Describe peer and professional supports available for ministers in your association/conference:

Community of Practice is a small group that gathers on a monthly basis. This group includes area UCC pastors and ministers.

WHO IS GOD CALLING TO MINISTER WITH US?

Describe the ministry goals you envision your next minister collaborating with the congregation to achieve.

This feedback came from our town hall discussions with our church members.

- **Increase the size of our active membership.**
- **Using biblical references and using stories that are relevant to our current situations.**
- **Continue our Outreach (local and global community).**
- **Continue our teaching goals.**
- **Continue to involve our youth.**
- **Continue our music program.**

Describe how your vision of the minister you are now seeking will assist the congregation in making an impact beyond its walls.

The First United Church of Christ vision statement: As a faith community we practice:

- **Welcoming all into the presence of Christ;**
- **Connecting with God and one another through regular Worship, ministries, study and fellowship;**
- **Reaching out to our neighbors with compassion and hope.**

Specify language requirements or culturally-specific capacities preferred in a next ministerial leader, and why those matter to the congregation's sense of calling.

English

Based on what you have learned about who your church is, who your church's neighbor is, and who God is calling the church to become, describe four areas of excellence from *The Marks of Faithful & Effective Authorized Ministry* that your next minister will display to further equip the congregation's ministry in these areas.

EXHIBITING A SPIRITUAL FOUNDATION AND ONGOING SPIRITUAL PRACTICE

- **Modernize way of teaching (life and current relevance to sacred stories and traditions.**
- **Leading faith formation effectively across generations.**

BUILDING TRANSFORMATIONAL LEADERSHIP SKILLS

- **Empowering the Church to be faithful to God's call, reflective of Christ's mission and open to the surprises of the Holy Spirit.**
- **Encouraging leadership development of self and others through continued education and life-long learning.**
- **Performing necessary administrative tasks.**

CARING FOR ALL CREATION

- **Drawing on the ministry of Jesus Christ to confront injustice and oppression.**
- **Practicing the radical hospitality of God.**
- **Engaging in mission and outreach.**
- **Nurturing care and compassion for God's creation.**
- **Providing hope and healing to a hurting world.**

STRENGTHENING INTER-AND INTRA- PERSONAL ASSETS

- **Being accountable with God and the Church.**
- **Exhibiting strong moral character and personal integrity.**
- **Respecting the dignity of all God's people.**
- **Understanding and ministering people in all stages of life.**
- **Demonstrating excellent communication skills.**

WHO IS GOD CALLING US TO BECOME?

Who is God calling you to become as a congregation?

- Faith Formation
- Tech savvy
- Contemporary style:
 - Worship (more modern music), blend of modern and traditional
 - Incorporate video clips with a more modern service (more pizzazz)
 - More inviting to our younger generation
- How do we get our confirmands to return?
 - Encourage volunteer opportunities
- Growth in membership
 - Seek out inactive members
 - Contact new people in community
- Continue our Outreach (local & global)
- Acknowledge participants
- Celebrate successes

Describe how God is calling you to reach out to address the emerging challenges and opportunities of your community and congregation.

For example, describe two experiments your congregation has initiated or engaged in the past year, what were the results and where do you see your next steps? Has your church had a multi-year strategic plan or vision statement; if so, where do you see that plan/vision taking you?

2 experiments:

1. **Messy Church** – Pastor Heide held Sunday Service in our Fellowship Hall a couple of times. There were stations set-up for reading and activities. It was meant to be a more relaxed environment. There were mixed results, the older members were uncomfortable in the non-traditional format.
2. **Coffee & Conversation** – These were weekly conversations with Pastor Heide at our local restaurant. It was her way of connecting with the community outside the church.

WHO ARE WE NOW?

CONGREGATIONAL REFLECTIONS
11-YEAR REPORT
CONGREGATIONAL DEMOGRAPHICS
PARTICIPATION AND STAFFING
CHURCH FINANCES
HISTORICAL INFORMATION

CONGREGATIONAL REFLECTIONS

Describe your congregation's life of faith.

For example, who is a favorite theologian admired in the congregation and why? How is God most often described in worship liturgy? In what ways would you describe the Holy Spirit in your midst?

First UCC Covenant: We covenant with one another to seek and respond to Word and Will of God. We resolve to walk together in the ways of the Lord, made known and to be made known to us. We hold it to be the mission of the Church to witness to the gospel of Jesus Christ in all the world, while worshipping God, and striving for truth, justice, and peace.

As did our fathers and mothers, we depend on the Holy Spirit to lead and empower us.

**We pray for the coming of the Kingdom of God,
And we look with faith forward the triumph of righteousness and eternal life. Amen.**

“God is Love”

Describe several strengths or positive qualities of your congregation.

- 1. Our church is welcoming to the community.**
- 2. We have a strong Outreach. We are the SAFE place for our entire school district. We offer gas cards and money to those in need.**
- 3. We are taking technology strides.**
 - a. Monthly and weekly newsletters sent via e-mail.**
 - b. Hymns, order of worship and announcements are projected on flat screens.**
 - c. Offerings are available via direct deposit.**

- d. New audio and video system.**
- 4. We are optimistic.**
- 5. We are charitable. (Data pulled from 2016 Annual Report)**
 - a. Donations collected through Lenten folders totaled \$299 and was forwarded to Belleville Community Action Project (BCAP) to help those in need.**
 - b. CROP Walk – donations of \$2,742.26 was raised by 22 walkers from Belleville area churches.**
 - c. Giving Tree – With the help of many church and community members we were able to give gifts to 99 children in 36 families in the Belleville area.**
 - d. Family Promise – members of our congregation helped provide meals and overnight supervision for families in need in Green County.**
 - e. Friends of State St. Family – First UCC members helped to provide meals for persons in need in the Madison area.**
 - f. Worship recordings – Each Sunday the worship service is recorded and duplicates made for shut-in members. Care and Share members have been faithfully delivering the recordings.**
 - g. Food Pantry – members have donated items to our local Food Pantry throughout the year.**
 - h. Reindeer Rush Run (a Fundraiser for Belleville Community Health Improvement Project - BCHIP)– in December, several First Church members volunteered and participated in the Reindeer Rush Run. The run was held in honor and memory of Pastor Heide who was the president of the organization.**
 - i. Prayer shawls – A group of members knit or crochet shawls. These shawls are packaged up along with a prayer and handed out to those in need.**
 - j. Project Linus – A member creates quilts for Project Linus. Residents at the New Glarus Home are also involved in helping.**

Describe what worship is like when your congregation gathers.

We have a traditional-style worship setting. Our order of service is blended, it's a combination of old-time and new contemporary songs. Our worship is drawn from UCC. Our baptism involves our Pastor, entire family and godparents. Our celebration of a new member is done by our Pastor walking new member or baby around the church to introduce them to the congregation.

Describe the educational program and/or faith formation vision of your church.

For example, how are young people in leadership? How do people continue to form their faith over a lifetime? Name a topic studied or curriculum used recently; what was the impact of this study on those who attended?

We are moving from an educational to a faith formation. Confirmation materials are more self-examination. We are teaching our youth about the bible. Two years ago, our church council studied "Liberating Hope" and shared it with our congregation. Our previous minister, Pastor Heide, had weekly "Coffee & Conversation" with anyone that wanted to join her at our local restaurant.

We had Lenten bible studies on Mark and we also read "The Shack", "We Make the Road by Walking", "The Phoenix Affirmation" and "To Begin by Beginning".

Describe how your congregation is organized for ministry and mission.

For example, how are decisions communicated in your church? How are teams or committees organized? Where does your church struggle for vision?

- When it comes to decision-making, how many hours are spent in meetings per month?

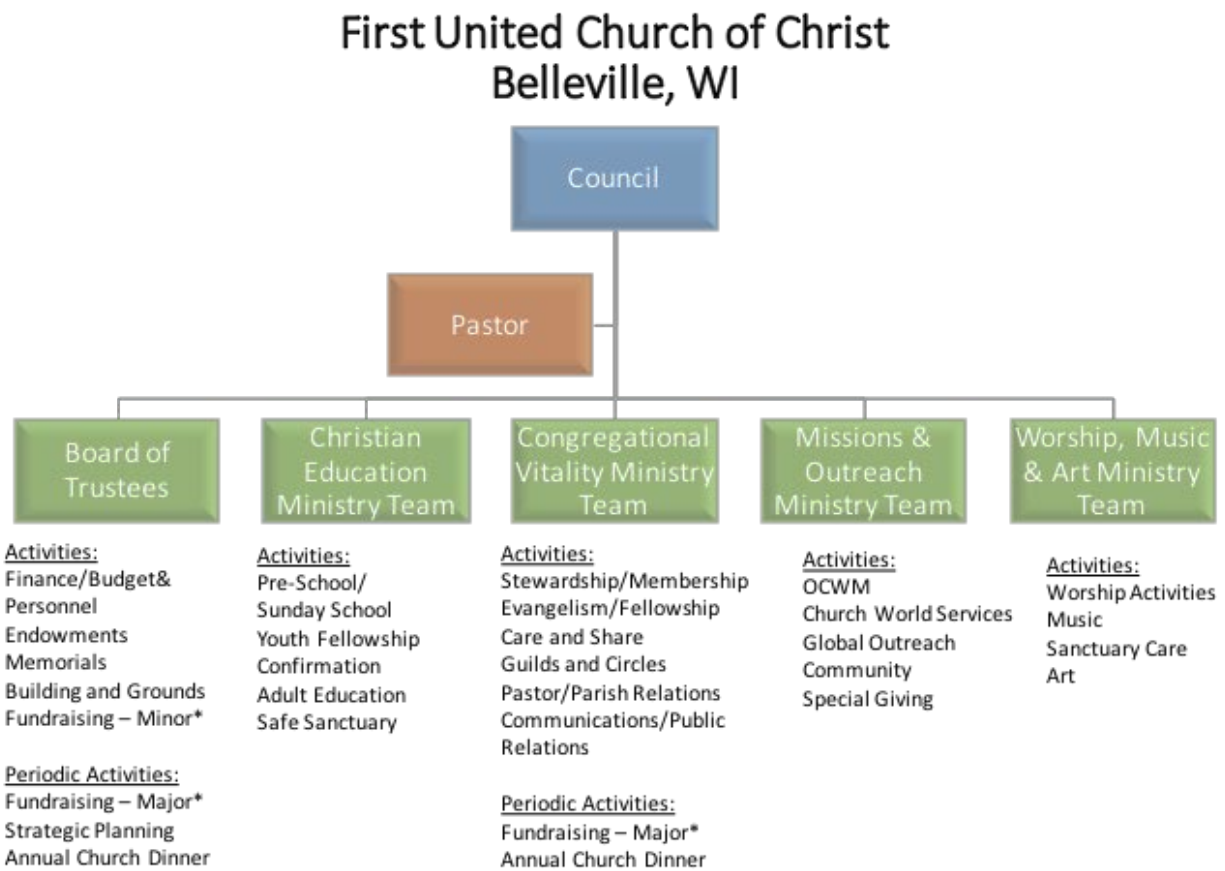
The church council meets on a monthly basis; these meetings The Finance committee meets on a monthly basis. Building and Grounds and Endowment meets quarterly.

- Think of a time when action had to be taken quickly, for example when a crisis or disaster occurred. How was that accomplished?

Our beloved and respected Reverend, Heide Hackman, passed away unexpectedly on October 14, 2016. We worked very closely with Reverend Joanne Thomson from the Southwest Conference in placing an interim minister for our services to continue, October 16, 2016. After several months of grieving, the council worked closely with our UCC conference to hire an interim, Reverend Ken Schaub.

- Can you provide the next minister with a copy of an organization structure, bylaws and/or annual report to further explain the patterns of the church’s activity and governance? [Yes/No]

See attached by-laws and annual report



*Minor = \$5,000 or less annually
 *Major = More than \$5,000 and/or for designated projects

11-YEAR REPORT

See attached

CONGREGATIONAL DEMOGRAPHICS

Describe those who participate in your church.

		<i>Is this number an estimate? (check if yes)</i>
Number of active members:	211	x
Number of active non-members:	22	x
Total of church participants (sum of the numbers above):	233	x

Percentage of total participants who have been in the church:

		<i>Is this percentage an estimate? (check if yes)</i>
More than 10 years:	54%	x
Less than 10, more than 5 years:	21.6%	x
Less than 5 years:	24.4%	x

Number of total participants by age:

0-11	12-17	18-24	25-34	35-44	45-54	55-64	65-74	75+	<i>Are these numbers an estimate? (check if yes)</i>
20	25	5	15	25	35	45	40	40	x

Percentage of adults in various household types:

		<i>Is this percentage an estimate? (check if yes)</i>
Single adults under 35:	17%	x
Joint household with minors:	24%	x
Single adults age 35-65:	11%	x
Joint household with no minors:	30%	x

Single adults over 65:	18%	x
------------------------	-----	---

Education level of adult participants by percentage:

		<i>Is this percentage an estimate? (check if yes)</i>
High school:	98%	x
College:	35%	x
Graduate School:	5%	x
Specialty Training:	30%	x
Other (please specify):		

Percentage of adults in various employment types:

		<i>Is this number an estimate? (check if yes)</i>
Adults who are employed:	55%	x
Adults who are retired:	35%	x
Adults who are not fully employed:	10%	x

Describe the range of occupations of working adults in the congregation:

We live in a community with families who farm, retired members, professionals employed in the Village and near-by in the city of Madison (educators, government, health care and state workers) and self-employed members in the construction business.

Describe the mix of ethnic heritages in your congregation, and the overall racial make-up. Most UCC congregations tend to describe themselves as “diverse.” Yet, the vast majority of UCC congregations are mono-cultural. What does diversity mean in your context?

Our congregation is primarily Northern European, third and fourth generation that includes Swiss, German, French and Norwegian.

List the date your congregation has had or will have a conversation using a resource such as the Welcoming Diversity Inventory. Comment on the results.

At this point, we have not had this conversation with the congregation.

PARTICIPATION AND STAFFING

Complete the following chart. Please leave blank any fields that are not applicable to your congregation.

Ways of Gathering	Estimated number of people involved in attendance	Who plans each of the listed gatherings? (<i>list any and all worship planners, such as various lay leaders, pastors, musicians, other staff</i>)
Adult Groups or Classes		
Baptisms (<i>number last year</i>)	2	Pastor
Children's Groups or Classes	10	Christian Ed team
Christmas Eve and Easter Worship	281	Pastor and works with Chair of Music & Art
Church-wide Meals	5 meals served to 170 people	Women's Guild and Christian Ed
Choirs and Music Groups	1 group of 8 people	Bell Choir
Church-based Bible Study		
Communion (<i>served how often?</i>)	18 times a year to 1,170 people (avg 65 people x 18 times)	Head Usher and Pastor
Community Meals (State Street meal & Green County Family Promise)	State Street: 16 people involved; serve 100 people (we do this monthly so we serve 1,200/year) Family Promise: 3 people involved;	State Street Coordinator and Green County Family Promise

	serve 1-15 people (we do this quarterly so we serve 4-60 people/year)	
Confirmation (<i>number confirmed last year</i>)	4	Pastor
Drama or Dance Program	N/A	N/A
Funerals (<i>number last year</i>)	6 funerals	Pastor
Intergenerational Groups		
Outdoor Worship - Easter Sunrise service	30	Pastor
Prayer or Meditation Groups		
Public Advocacy Work		
Retreats		
Theology or Bible Programs in the Community		
Weddings (<i>number last year</i>)		
Worship (time slot: 9:30-10:30 a.m.)	65 avg for 2017	Pastor, Church Secretary, Media Specialist and Music & Art
Worship (time slot: _____)		
Young Adult Groups or Classes		
Youth Groups or Classes (grades 6-8)	8	Pastor
Other - All Church Dinner	200 people involved; 679 meals served	Church Dinner Chair

List all members or regular participants in your congregation who are ordained, licensed, or commissioned ministers. Indicate those with current United Church of Christ Three-Way Covenants (i.e. serving in a congregation) or Four-Way Covenants (i.e. serving in a ministry beyond a congregation).

Name	Three-Way or Four-Way Covenant? (3 or 4 or No)	Ministry Setting	Type of Ministry Role	Retired? (Y or N)
N/A	N/A	N/A	N/A	N/A

List all current staff, including ministers. Exclude the position you are seeking to fill. Indicate which staff person serves as head of staff. **See Attached Church Council members & officers for 2017.**

Staff Position	Head of Staff?	Compensation (full time, part time, volunteer)	Supervised by	Length of Tenure for current person in this position
Interim Pastor Ken Schaub		Full-time	Church Council	Since January, 2017
Office Manager Kathy Stenseth		Part-time	Pastor	2 years
Treasurer Ron Babler		Part-time	Church Council	20+ years
Financial Treasurer Juanita Harbort		Part-time	Church Council	8-10 years
Organists: Kim Goke Barb Babler Terry Croft		Part-time	Pastor	Kim - 20+ years Barb - 50+ years Terry - 24 years
Church Council: Paul Hodel - President Greg Wolff - VP Shawn Kippley - Secretary Jean Heinzman Greg Graves Barb Babler Tanya Helwig Jayne Campbell Eric Shrader Sandy Van Kleeck Stacy Heller		Volunteer	Church Council	Paul - 8 years Greg W. - 6 years Shawn - 8 years Jean - 6 years Greg G. - 2 years Barb - 2 years Tanya - 3 years Jayne - 1 year Eric - 1 year Sandy - 1 year Stacy - 1 year

REFLECTION

Reflection: After reviewing the congregational demographics and activities above, what does this information reflect about your congregation's overall ministry?

Even though we are an aging congregation, we continue to recruit new members. On May 21, 2017, we welcomed 11 new members. We continue to offer the same amount of activities even though we have seen a decline in our youth participation.

CHURCH FINANCES

Current annual income (dollars used during most recent fiscal year) **Data from 2017 Annual Report**

Source	Amount
Annual Offerings and Pledged Giving	\$128,855.00
Endowment Proceeds (<i>as permitted within spending policy, such as a cap of typically 4.5%-5% on total return</i>)	\$841.00
Endowment Draw (<i>beyond what is permitted by spending policy, "drawing down the principal"</i>)	\$
Fundraising Events	\$2,014.00
Gifts Designated for a Specific Purpose - Donated to Memorial Fund	\$13,155.00
Grants	\$
Rentals of Church Building	\$675.00
Rentals of Church Parsonage	\$
Support from Related Organizations (<i>e.g. Women's Group</i>) <i>Women's Guild</i>	\$1,808.00
Transfers from Special Accounts	\$
TOTAL	\$147,348.00

Current annual expenses (dollars budgeted for most recent fiscal year):

Data from 2017 Annual Report - \$146,480.11

Attach most recent church budget, spending plan, operating statement, or annual treasurer's report as shared publicly with the congregation, or - if your church does not pass an annual budget - list current budgeted expenses here.

See attached 2017 Annual Report

Considering total budgeted expenses for the year, compare total ministerial support. What is the percentage?

Approximately 53%

Has the church ever failed to pay its financial obligations to a minister of the church?

No

Is your church 5-for-5, i.e. does it include each of the following contributions during the church year? (*indicate those included during the most recent fiscal year*)

- Our Church's Wider Mission (OCWM - Basic Support)
- One Great Hour of Sharing
- Strengthen the Church
- Neighbors in Need
- Christmas Fund

In what way is OCWM (Basic Support) gathered? If calculated as a percentage of operating budget, what is that percentage? (*recommended 10%*)

OCWM provides us with a suggested amount, we currently pay \$1,500.00/quarter (\$6,000.00/year). This money comes from our General Fund.

What is the church's current indebtedness?

Total amount of loan debt: **We took out a Line of Credit (LOC) for \$150,000 in the Fall of 2016. We have used approximately \$60,000.00 of this LOC towards our audio system and kitchen remodel.**

Reason for debt: **Revitalization & Restoration projects (see below)**

Are capital and other payments current? **Yes**

If a building program is projected or underway, describe it, including the projected start/end date of the building project and the total project budget.

Revitalization & Restoration projects:

Upgrade Audio System – completed 1st Quarter, 2017

Kitchen remodel – completed 11/1/17

Foundation wall repair – completed 9/1/17

Window replacement – ongoing; part of Revitalization & Restoration project

If the church has had capital campaigns in the last ten years, describe:

Year(s)	Purpose	Goal	Result	Impact
11/2017	New Kitchen & basement windows		\$95,000	
9/2008	New Roof		\$34,885	

If a capital campaign is underway or anticipated, describe:

Year(s)	Purpose	Goal	Result	Impact
2018	Replace windows	\$	\$	
2018	Upgrade electrical system	\$	\$	

Describe the prominent mission component(s) involved in the most recent (or current) capital campaign.

Does your church have an endowment? **Yes**

What is the market value of the assets? **\$64,982.00 as of May, 2018**

Are funds drawn as needed, regularly, or under certain circumstances?

What is the percentage rate of draw (last year, compared to 5 years ago)?
100% of income earned is used for camps, food pantry and scholarships.

Describe draw on endowment, if any, to meet operating budget expenses for the most recent year and the past five years:

We have not touched the principal.

At the current rate of draw, how long might the endowment last?

Please comment on the above calculations or estimates:

Other Assets

Reserves (savings): \$ **N/A**

Investments (other than endowment): \$

Does your church have a parsonage?

No, but we have a \$62,787.00 parsonage fund.

Fair market rental value of the parsonage:

How is the parsonage used?

Street / City / State / Zip:

Finished square footage:

Number of Bedrooms, Number of Bathrooms:

Assessed real estate value:

Available for minister residence: Y/N

Expected minister residence: Y/N
Condition of structure, systems and appliances
Entity in the church responsible for review and needed repairs

Describe all buildings owned by the church:

130 E. Church Street, Belleville, WI 53508

Describe non-owned buildings or space used or rented by the church:

None

Which spaces are accessible to wheelchairs?

Elevator for Handicap accessibility to worship space, classrooms, fellowship space, kitchen and restrooms

Reflection: After reviewing the church's finances and assets described above, what does this information reflect about your congregation's mission and ministry?

For example, when was a time the church made a major budget change? How is the budgeting process done? What new ministry initiative has your church financed?

Our Finance Committee is responsible for the budgeting process completed annually. We have done an excellent job of maintaining our budget. Over the last few years, we have been proactive in modernizing our building.

HISTORICAL INFORMATION

Name one to three significant happenings in the history of your church that have shaped the identity of your congregation. Add the most important event in the life of your church in the past 10 years.

- 1. We celebrated our 100th anniversary in 2014 with a dinner and special guests.**
- 2. We hired a young, female Pastor in 2005 who brought in new ideas and shifted our culture to be more accepting and diverse.**
- 3. The addition of our Fellowship Hall 10+ years ago. This allowed us to open our church to community-wide meetings, our annual church dinner and a place for our members to utilize for fellowship and meetings.**

Describe a specific change your church has managed in the recent past.

When we lost our beloved and respected Pastor Heide, October 14, 2016, we discovered that we are strong and believe in our faith as we moved forward without our leader.

We restructured our committees to include checks and balances.

We updated our technology. Our hymnals are shared on the screens. This has enhanced our worship.

Every church has conflict, some minor, some larger. "Where two or three are gathered, there will be disagreement..." Describe your congregation's values and practices when it comes to conflict.

For example, what is an example of a recent conflict and something your congregation learned from it? Describe an occasion when Does your church have policies, protocols or structures for dealing with conflict?)

During the declining economy in 2008, we sought to give our current Pastora raise and there was some conflict with some of our members. The church council stoodtheir ground and issued the raise.

Ministerial History (include all previous ministerial staff for the past 30 years)

In order by most current:

Staff member's name	Years of service	UCC Standing (Y/No)
Interim Reverend Ken Schaub	Since January, 2017	ECLA with dual standing
Reverend Heide Walker Hackman	11 years	Yes
Interim Reverend Beryl Melcher	1 year	Yes
Reverend William McIntyre	5 years	Yes
Interim Reverend Michael Campbell	1 year	???
Reverend Donald G. Nelson	10 years	Yes
Interim Reverend Donald G. Nelson	1 year	Yes
Reverend Howard Beil	33 years	Yes

Comment on what your church has learned about itself and its relationship with persons who provided ministerial leadership:

The church has a very active, committed council. The council is here to support the pastor and look for guidance.

Has any past leader left under pressure or by involuntary termination?
Y/N/Ask us

No; however, there were some dissatisfied members with Reverend McIntyre and he left on his own.

Has your church been involved in a Situational Support Consultation?
Y/N/Ask us

No

Has a past pastor been the subject of a Fitness Review while at your church?
Y/N/Ask us

No

WHO IS OUR NEIGHBOR?

COMMUNITY VISION
MISSION INSITE

COMMUNITY VISION

How do the relationships and activities of your congregation extend outward in service and advocacy?

For example, which service activities has your church participated in this past year? Where has the church participated in global connections of care and justice? What is currently transformational in your church's engagement with neighbors near or far?

Our service activities include: State Street Family, Family Promise, Giving Tree, Food Pantry, Souper Bowl Sunday (donated food and money goes to our local food pantry, led by our youth).

Our global connections include: CROP Walk and 5-for-5 (Our Church's Wider Mission (OCWM - Basic Support), One Great Hour of Sharing, Strengthen the Church, Neighbors in Need and Christmas Fund).

Describe your congregation's participation in meetings, relationships and activities connecting the wider United Church of Christ (association / conference / national setting).

Pastor Heide attended the annual Southwest Association meeting. She was a past Moderator and Chair of Church and Ministry. She was a delegate to General Synod. Pastor Heide was actively involved in the Association, which was appreciated by the church.

Check all of the following "statements of witness" that apply to your UCC faith community. (Find more information on these statements at ucc.org.)

- Accessible to All (A2A)
- Creation Justice

- Economic Justice
- Faithful and Welcoming
- God Is Still Speaking (GISS)
- Immigrant Welcoming
- Inter-cultural/Multi-racial (I'M)
- Just Peace
- Global Mission Church
- Open and Affirming (ONA)
- WISE Congregation for Mental Health
- Other UCC designations:
- Other similar designations in affiliated denominations
- None

Reflect on what the above statement(s) mean(s) to your community. Is your congregation interested in working toward any of the above statements of witness in the near future?

There was discussion on Open and Affirming (ONA) about 6 years ago. This might be something we will need to re-address in the near future as our culture changes.

Describe your congregation's participation in ecumenical and interfaith activities (with other denominations and religious groups, local and regional).

We have a long-standing tradition with the following:

- **CROP Walk – We are involved in the CROP Walk with our local churches (Primrose Lutheran, Methodist and Catholic churches).**
- **Good Friday – Services are held at our church along with the Methodist Church.**
- **Thanksgiving – Services are held at the Methodist Church.**
- **Community Picnic in August – Ecumenical services are held at the Catholic church with us and the Methodist Church.**

If your congregation has a mission statement, how does that mission statement compare to the actual time spent engaging in different activities? Think of the range of activities from time spent gathering, to governance, to time spent going out.

The First United Church of Christ Mission Statement: First UCC reaches out to all people to grow and share in Christian, faith, hope, and love.

Reflect on the scope of work assigned to your pastor(s). How is their community ministry and their ministry in and on behalf of the wider church accounted for in the congregation's expectations on their time?

Our Pastor's ministry is based and grounded in the congregation. The congregation expect the pastor to be active and visible in the community, both as part of community service efforts and as an expression of the church's presence in the life of the community. We encourage and support our pastor to be involved as a leader in the work of the Association and/or Conference as part of belonging to the First United Church of Christ.

MissionInSite

Comment on your congregation's MissionInSite report with data for your neighborhood(s) or area. What trends and opportunities are shown?

See attached

Our school district is in the process of making upgrades to the high school and building an addition to the elementary school, both made possible by a \$20.75 million referendum. Plans are also being made to build a new public library. We expect these changes to attract more people to our community.

How do your congregation's internal demographics compare or contrast to a) the neighborhoods adjacent to your church, and b) other neighborhoods with which your church connects?

Internal demographics are very comparable and equal to the community. We live in a small village.

How are the demographics of the community currently shaping ministry, or not?

We live in a community with adults and youth who are very busy. Time for church and other activities are stretched. We've adapted by moving Sunday School during worship and Confirmation to Wednesday evenings.

What do you hear when you talk to community leaders and ask them what your church is known for?

Our Church is known for a safe, welcoming place to attend. The Fellowship Hall is large enough to accommodate many community events. Our church is known for its annual church dinner in the Fall.

What do new people in the church say when asked what got them involved?

"Pastor Heide asked me to serve on the church council a year ago and I agreed to because our church is a welcoming place to come and a

chance to be with friends and family and meet new people. My daughter also had a wonderful experience in youth classes and confirmation. My involvement with the church has given me an opportunity to give something back. Just being at the church gives me a sense of peace and I always leave there feeling better about myself and closer to God.” Tanya Helwig

“After my grandpa passed away, Pastor Heide was very supportive during this time. The church is a safe place to come and grieve. I continue to attend church regularly to build relationships with congregation members.” Cassidy Heller

“I rejoined FUCC 8 years ago, this was mainly due to my connection with Pastor Heide.” Paul Hodel

“I moved here in 2010 and was looking for a church home. FUCC was close to my home so I came to a service at FUCC. I continued to search for a church home and I came back to FUCC. Pastor Heide remembered my name so it made we want to come back.” Lori Krug

REFERENCES

Name up to three people who have agreed to serve as phone and written references. Make sure they are not members of your church but are persons who know your church well enough to be helpful to candidates seeking more information. Request a letter from each reference in answer to the four prompts below. Attach the letters (up to three) as desired.

REFERENCE 1

**Nate Perry / 7-12 Principal / Belleville High School
(608-835-6120 x3440 / perryn@belleville.k12.wi.us / School Contact**

From: CassidyHeller <hellerc@belleville.k12.wi.us> [Edit Address Book]

To: Tim and Tanya Helwig <helwigroofing@earthlink.net>

Subject: Response from Mr. Perry

Date: Jul 13, 2017 10:48 AM

1. Describe some areas of strength in this church's ministry?

The students in the youth program had been actively involved- not just passive participants. First UCC has also had role in community organizations like BCAP (Belleville Community Assistance Program) and BCHIP (Belleville Community Health Improvement Project). They assisted families in the community, even outside of their church membership.

2. Describe some areas for improvement in this church's ministry?

I would not say that it is an area for improvement, but I would like to see First UCC continue its community partnerships.

3. Describe a significant experience you have had of this church's ministry?

First UCC and Belleville Middle and High School were partners in school safety. The church has allowed students from the School District of Belleville to access First UCC's facilities as a secondary evacuation site in the event of a safety or security threat.

4. Anything else you wish to share.

N/A

--

Cassidy Heller

Student at Belleville High School

REFERENCE 2

**Amanda Peterson / Executive Director / Sugar River Senior Center
(608) 424-6007 / srseniorcenter@outlook.com / Senior Center Contact**



Sugar River Senior Center

SENIOR CITIZENS PROGRAM OF BELLEVILLE, EXETER & MONTROSE

21 S. Vine St. P.O. Box 267 Belleville, WI 53508
Phone: 608-424-6007 Fax: 608-424-1552
Email: srseniorcenter@outlook.com

July 24, 2017

To Whom It May Concern,

I am writing on behalf of the Sugar River Senior Center in response to a request for a church profile.

1. Describe some areas of strength in this church's ministry?

First United Church of Christ has had a long standing positive history in this community. They have strength of time and longstanding members.

2. Describe some areas of improvement in this church's ministry?

As a Social Service Agency it is our feeling that all community groups can improve in outreach to those most needy in our community, as well as those in need of support.

3. Describe a significant experience you have had of this church's ministry?

As a longtime resident of the community I have many fond memories of the Annual Church Dinner and the sense of community it brings.

4. Anything else you wish to share.

This community and Church lost a wonderful woman and Pastor in the loss of Heidi. Her warmth and sense of community is greatly missed. This Church congregation is strong in history and is a great spiritual community.

Sincerely,

Amanda Peterson

Executive Director

Sugar River Senior Center

Senior Citizens Program of Belleville, Exeter & Montrose

REFERENCE 3

Tami Fleming / Executive Director / Friends of the State Street Family

**(608-535-9394 / fssfhomelessoutreach@gmail.com / Contact for
Friends of the State Street Family**



Friends of the State Street Family
Giving HELP and HOPE to the homeless in Madison

7/30/2017

To Whom it may concern,

Belleville's United Church of Christ Leadership and Congregation have been an amazing support and tremendous help to our Homeless Outreach Organization in Madison called the Friends of the State Street Family. Not only was the UCC Church a first supporter of our non-profit organization, they are the longest running supporter of our work.

They have been kind enough to allow me to speak during church services and explain what we are doing and why. They have made food to feed the hungry through our organization quarterly, then monthly every year for the past 6 years. They have also participated in several practical need drives and helped through other means of support throughout our partnership to help those in need. I would also like to add that the late Pastor, Pastor Heidi was a source of encouragement and an example of selfless leadership for me on a personal level.

What the UCC Church of Belleville does embodies humble and faithful service to those in need. This is the foundation that our non-profit organization is built upon. With the assistance of The United Church of Christ from Belleville, in 2016 Friends of the State Street Family was able to serve 9,700 individual meals, get 52 people moved off of the street and into permanent, supportive housing, and give survival gear out to approximately 400 homeless individuals. With UCC's added hours of volunteer food preparation, our volunteer hours totaled 2,764 this year.

We are tremendously grateful for this congregation and for their support of our organization for almost 6 years. They have continued to be there when they were called upon to feed the hungry and help those living in the most profound poverty in Dane County. They are an amazing group of people and I am thankful to be associated with them.

Respectfully,

Tami

Tami Fleming
Executive Director
Friends of the State Street Family
www.friendsofthestatestreetfamily.org
608-535-9394 -Outreach Line
Fssfhomelessoutreach@gmail.com

REFERENCE 4

Brad Beal / President / Beal Funeral Homes Inc.

608-424-3771 / blbeal@tds.net / Contact for Beal Funeral Homes Inc.

Beal Funeral Homes, Inc.

Becker-Beal Funeral Home
109 Greenway Cross
Belleville, Wi. 53508
608-424-3771
Fax 608-527-2302
blbeal@tds.net



Zentner-Beal Funeral Home
29 Sixth Avenue
New Glarus, Wi. 53574
608-527-2211
Fax 608-527-2302
blbeal@tds.net

August 1, 2017

To Whom It May Concern,

1. Describe some areas of strength in the church's ministry?

First United Church of Christ has had a leadership role in the Belleville community both in action and presence with the membership providing a foundation of giving and religious teaching.

2. Describe some areas of improvement in the church ministry?

Working with the youth of the community, especially drug prevention and treatment programs both for the individual and their family and function as a support network.

3. Describe a significant experience you have had of this church's ministry

The dedication of past ministers to both the congregation and community, especially Rev. Beil and his years of service.

4. Anything else you wish to share.

I believe the dedication of the senior members of the church has gone unnoticed by many and the credit to how they have built the church both spiritually and facilities is taken for granted.

Thank you for the opportunity to share my thoughts with you.

Bradley L. Beal
President
Beal Funeral Homes Inc.

PROMPTS FOR REFERENCES

Describe some areas of strength in this church's ministry.

Describe some areas for improvement in this church's ministry.

Describe a significant experience you have had of this church's ministry.

Anything else you wish to share.

CLOSING THOUGHTS

CLOSING PRAYER

STATEMENT OF CONSENT

CONFERENCE/ASSOCIATION VALIDATION

CLOSING PRAYER

Include here any prayer or dream for the minister you imagine journeying toward you... a poem, for example, or a Scripture passage or a piece of music that is meaningful to your Search Committee:

“Here I Am, Lord” - Hymn #69 in “Glory to God” hymnal.

Refrain “Here I am, Lord. Is it I, Lord? I have heard you calling in the night. I will go, Lord, if you lead me. I will hold your people in my heart.”

God is Good... All the Time!

All the Time, God is Good

For the Lord is good; his steadfast love endures forever and faithfulness to all generations. Psalm 100:5

“Embrace us, guide us, change us, lead us, love us, become us.”

Faith Begins by Letting Go” - Hymn #684 in “Glory to God” hymnal.

“Faith begins by letting go, giving up what had seemed sure, taking risks and pressing on, though the way feels less secure; pilgrimage both right and odd, trusting all our life to God.”

Christmas in Heaven(author unknown)

**'Tis Christmas in Heaven, what a beautiful sight!
It's my first one here; everything is all right.
The crib is adorned with the brilliance of stars,
Wisemen have come from Venus and Mars.
I've met all our dear ones who preceded us here;
The reunion was lovely, an event full of cheer.
And tonight we'll all gather, in reverence we'll kneel,
For the Babe in the cradle up in Heaven is Real.
I think of my family that I left behind
And I pray that your Christmas is as blessed as mine.
Please shed no more tears, for my soul is at rest,
Just love one another; live life to its best.
Yes, Its Christmas In Heaven,
So I've heard them say,
Yet, Christmas in Heaven
Happens every day.**

STATEMENT OF CONSENT

The covenantal relationship between a church and those called by that church to serve as pastors and teachers and in other ministerial positions is strengthened when vital information is openly shared by covenantal partners. To that end, we attest that, to the best of our abilities, we have provided information in this profile that accurately represents our church. We have not knowingly withheld any information that would be helpful to candidates.

As the committee charged with the responsibility for identifying and recommending suitable new minister for our church, we have been authorized to share the information herein with potential candidates. We understand that a candidate may wish to secure further knowledge, information, and opinions about our church. We encourage a candidate to do so, recognizing that an open exchange of relevant information builds the foundation for continuing and healthy relationships between calling bodies and persons seeking a ministry position.

1. Which individuals and groups in the church contributed to the contents of this Local Church Profile? *(for example, church council or consistory, transition team, etc.)*

Tanya Helwig, Chair; Lori Krug, Chaplain; Michelle Mullen, Communication Lead; Sandy Van Kleek, Secretary; and other members are Paul D. Hodel, Richard Kittleson, Tricia Kittleson, Kathy Marty and Cassidy Heller (youth member).

We also held 3 town hall meetings with our members for input.

2. Additional comments for interpreting the profile:

Signed:

Tanya Helwig / Chair / 6/26/18

VALIDATION BY CONFERENCE/ASSOCIATION

The congregation is currently in good standing with the association / conference named.

Staff Comment:

To the best of my knowledge, ministerial history information is complete.

Staff Comment:

To the best of my knowledge, available church financial information is presented thoroughly.

Staff Comment:

My signature below attests to the above three items.



Signature:

Name / Title: Rev. Joanne Thomson/Associate Conference Minister

Email: jthomson@wcucc.org

Phone: 608-630-2992

Date: June 26, 2018

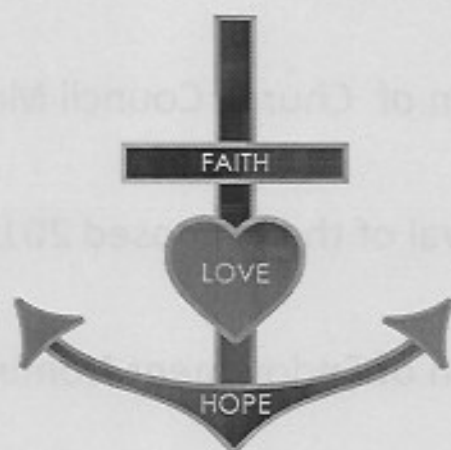
This document is created through support to Our Church's Wider Mission (OCWM) and is only possible through the covenantal relationships of all settings of the United Church of Christ.

"Jesus answered them, 'Have faith in God!'" - Mark 11:22

2017 ANNUAL REPORT

**FIRST UNITED CHURCH OF CHRIST
BELLEVILLE, WISCONSIN**

JANUARY 28, 2018



**WELCOMING
CONNECTING
REACHING OUT**

First United Church of Christ

NOTICE OF ANNUAL MEETING

**The 2018 Annual Meeting of
First United Church of Christ
will be held at
130 E. Church Street, Belleville, WI**

**January 28, 2018
at 10:30 am after our 9:30 am Worship**

Agenda Items will include:

- Election of Church Council Members
- Approval of the Proposed 2018 Budget
- Election of Endowment Nominees
- R & R Updates
- Other matters coming to the floor

TABLE OF CONTENTS

1.0 LEADERSHIP REPORTS

1.1 Interim Pastor’s Report.....	Page 4
1.2 Report of Wisconsin Conference Minister.....	Page 5
1.3 Church Officers, Council Members, Committee Members.....	Page 6
1.4 Council President’s Report.....	Page 8
1.5 Council Secretary’s Report.....	Page 9
1.6 Minutes of 2017 Annual Meeting.....	Page 10
1.7 Treasurer’s Annual Reports.....	Page 12
1.8 Church Administrative Report – Events/Listings.....	Page 16
1.9 Congregational Statistics.....	Page 20

2.0 ADMINISTRATIVE TEAMS REPORTS

2.1 Building & Grounds.....	Page 21
2.2 Church Dinner Report.....	Page 22
2.2.1 Church Dinner Financial Report.....	Page 22
2.3 Endowment Fund.....	Page 23
2.4 Finance Committee.....	Page 24
2.5 Fundraising Committee.....	Page 25
2.6 Memorial Fund.....	Page 26
2.6.1 Designated Donations.....	Page 27

3.0 CHRISTIAN EDUCATION REPORTS

3.1 Sunday School.....	Page 28
3.2 Middle School Youth (MSY) & Confirmation.....	Page 28

4.0 CONGREGATIONAL VITALITY REPORTS

4.1 Esther Circle.....	Page 29
4.2 Stewardship/Membership Committee.....	Page 29
4.2.1 Restoration and Revitalization Appeal/R & R.....	Page 30
4.3 Women’s Guild Secretary’s Report.....	Page 30
4.4 Women’s Guild Treasurer’s Report.....	Page 31

5.0 WORSHIP, MUSIC AND ART REPORT

5.1 Worship/Music/Art.....	Page 32
----------------------------	---------

6.0 MISSION AND OUTREACH REPORTS

6.1 Mission/Outreach Team.....	Page 32
6.2 Local Food Pantry Support.....	Page 33
6.3 Friends of the State Street Family.....	Page 33

7.0 PASTORAL SEARCH COMMITTEE REPORT

7.1 Pastoral Search Committee.....	Page 34
------------------------------------	---------

8.0 ANNUAL MEETING AGENDA ITEMS

8.1 Proposed Budget for 2018.....	Page 35
-----------------------------------	---------

1.0 LEADERSHIP REPORTS

1.1 INTERIM MINISTER'S REPORT

ANNUAL REPORT OF THE INTERIM PASTOR Rev. Kenneth L. Schaub

As we prepare for another annual meeting we also mark the one-year anniversary of the start of this intentional interim. It has been a learning year for the congregation and for me. I came into the congregation and the people of First Church were still in deep grief upon the sudden death of Pastor Heide Hackman. During the year we have seen the stages of grief played out both individually and collectively. One year later, people are at various points of grief. For the most part, I sense that the congregation has come to the stage of acceptance of her death although people still miss her. With that mood of acceptance, the congregation, as a whole, is ready to move forward. I would say the congregation has also grown in spirit and is ready to focus on the mission and ministry of First Church.

This has been a learning year for me as well. One might think it is simply slipping into another congregation. But, there are subtle differences from one congregation to another and even greater differences from one denomination to another. At first I think I tried to turn myself into being a UCC pastor and feared that my Lutheranism was hanging out. But after almost 40 years as a Lutheran pastor I concluded that this leopard cannot change his spots. I am a Lutheran pastor in a United Church of Christ congregation and, indeed, we can live together in harmony and embrace each other's differences.

During this year the Search Committee was formed. To provide the input of the congregation for the congregation's profile we hosted three town hall meetings for the congregation as a whole to express their feelings and desires. The meetings were met with less-than-expected attendance. Regardless, the feedback was helpful for the Search Committee.

The purpose of Interim Ministry is "to be a non-anxious presence" for the congregation. To that end, my goal has been to provide uninterrupted ministry to the congregation with the basics of: Teach, Preach, and Administer the Sacraments. There also come the other details such as some office administration, some housekeeping, some errand running, some refereeing, some hand-holding, and some pastoral kicks to the backside.

After one year on site, I see a shift happening in my role. I see my role moving from focusing on the developmental tasks of interim ministry to being a long-term substitute. There are some things that I would want to initiate if I was the settled pastor but I can only suggest at this point in my tenure. The interim period in a UCC congregation is longer than I am accustomed to. As of the annual meeting, I have no idea how long I will be at First Church. My intuition gives me some ideas but it is all dependent on candidates that the Search Committee receive, their vetting process of the candidates, Skype interviews, face-to-face interviews, discernment time, congregational voting, and if the candidate is in a congregation, the 90-day notice he or she must give their present church.

Until then, I remain your servant among servants.
Pastor Ken Schaub

1.2 REPORT OF WISCONSIN CONFERENCE MINISTER

2017 Annual Report
 Rev. Franz Rigert, Conference Minister

God is still speaking,
WISCONSIN CONFERENCE
UNITED CHURCH
OF CHRIST

Dear friends in the Wisconsin Conference of the United Church of Christ,

I am pleased to share the ongoing vision and mission of our Conference Ministry with you. Our essential purpose is to equip leaders and congregations with resources, guidance, ecclesiastical care and innovative ideas for the promotion of healthy and vital ministry.

Over the past few years we have encouraged congregations to dare to dream creatively, focusing on the Gospel imperative to which God is uniquely calling your church. While maintaining budgets and buildings is important, cultivating community-connecting ministries is transformational! When your congregation provides a food pantry, medical equipment, elder transportation, tutoring to children, earth care, or justice advocacy, you extend the compassion of Christ to your neighbors. Such servant ministry inspires spiritual passion and deepens our sense of purpose.

During the 2017 Annual Meeting we highlighted exciting and innovative ministry shifts! Many of our congregations are exploring new ways to BE THE CHURCH in our communities, through ecumenical, civic and non-profit partnerships. Our congregations are increasingly engaging in collaborative initiatives around mission and faith formation, and many have embraced shared pastoral models. Your Conference staff continues to prioritize the support of congregations and clergy. We invite you to peruse our new website (www.wcucc.org) which also serves as a digital resource center for networking, highlighting innovative ideas and best practices.

Our common life remains rooted in relationships - connecting, convening and cohort learning together. Many clergy and educators participate in Communities of Practice, where shared trust promotes ministerial support and accountability. Our justice working groups harness the collective energy from across the Conference, and challenge all of us to action. Our Lay Academy provides a solid biblical foundation and inspires theological reflection, and our Camps invite all into the faith, renewing us and fostering fresh patterns of thinking as we are surrounded by nature's sanctuary.

In less than two years the Wisconsin Conference will host General Synod 32 in Milwaukee! In addition to providing warm, Midwest hospitality, we hope to offer a bold example to the Wider Church. We know the difficult national challenges we face also exist right here in Wisconsin, and we wish to host with the integrity of a people who are doing their own work. Let us commit, together, to the ongoing work of racial justice, to the wider inclusion of the LGBTQ community, to the bold welcoming of immigrants and to the steadfast preservation of this precious earth.

In hope and gratitude,
 Rev. Franz Rigert, Conference Minister

1.3 CHURCH OFFICERS, COUNCIL MEMBERS, COMMITTEE MEMBERS**CHURCH COUNCIL MEMBERS**

Barb Babler 513-0217
harpbarb@gmail.com
 Jeff Christen 424-1524, 235-9682
jeff@cbsrepair.net
 Kim Goke 424-3964, 886-6381
kim.goke@gmail.com
 Greg Graves 575-5788
ggraves1965@charter.net
 Jean Heinzman 424-6152, 516-8103
gjheinzman@gmail.com
 Tanya Helwig 219-0901
helwigroofing@earthlink.net
 Paul D. Hodel 576-1876
phodel@mac.com
 Shawn Kippley 235-1896
srkippley@gmail.com
 Esther Olson 335-3207
olson3207@gmail.com

Sandy Van Kleeck 527-3322, 692-6263
vankleecks@wwdb.org
 Greg Wolff 424-3830, 712-7335
wolffbelfar@litewire.net

CHURCH OFFICERS

President	Paul D. Hodel
Vice President	Tanya Helwig
Secretary	Shawn Kippley
Treasurer	Ron Babler
Financial Treasurer	Juanita Harbort

ADMINISTRATIVE TEAMS**FINANCE/ BUDGET/
PERSONNEL**

Ron Babler, Chair
 Brenda Gehin
 Juanita Harbort
 *Paul D. Hodel
 Doug Myers
 *Esther Olson

COUNTING TEAM

Juanita Harbort, Lead
 Mary Austin
 Darlene Kittleson
 Joan Root

ENDOWMENT

*Jean Heinzman,
 Chair
 Phil Fransen
 Brenda Gehin,
 Secretary/Treas.
 Mitch Heller
 Karisa Hurst
 *Paul D. Hodel
 (non-voting member)

MEMORIAL

*Kim Goke, Chair
 Sandy Fransen
 *Jean Heinzman
 Jean Hodel
 Kathy Marty

**FUNDRAISING/
FELLOWSHIP**

Betsy Jacobs, Chair
 Juanita Harbort
 *Shawn Kippley
 Kathy Stenseth
 Lori J. Yaun

BUILDING & GROUNDS

Kerry Van Kleeck, Chair
 Herb Blaser
 Don Boley
 Tony Buol
 Jerry Butts
 *Jeff Christen
 Brian Duffin
 Steve Erb
 Neal Gehin
 *Greg Graves
 Jeff Hendrickson
 Ralph Jacobs
 Cory Kelly

CHURCH DINNER TEAM

Pam Kelly, Chair	Myron Heittola
Donna Christen	*Tanya Helwig
*Jeff Christen	*Paul D. Hodel
Betty Goke	Betsy Jacobs
*Kim Goke	Ralph Jacobs
Rodger Goke	*Shawn Kippley
Michele Gratz	Kathy Stenseth
Shawn Gratz	Kerry Van Kleeck
*Jean Heinzman	*Greg Wolff
Lois Heittola	

NOMINATING

*Greg Wolff, Chair
 Jayne Campbell
 *Paul D. Hodel
 *Shawn Kippley
 Kathy Stenseth
 *Sandy Van Kleeck

**Denotes Council Representative on Committee*

CHRISTIAN EDUCATION**C.E. TEAM**

*Barb Babler
 Donna Christen
 Karisa Hurst
 DeLynn Palmer

YOUTH FELLOWSHIP**ADULT EDUCATION****CONGREGATIONAL VITALITY****STEWARDSHIP/
MEMBERSHIP COMM.**

*Sandy Van Kleeck, Chair
 Chris Copeland
 Michele Gratz
 *Greg Graves
 Lori Krug
 *Greg Wolff

**PASTOR/PARISH
RELATIONS COMM.**

*Esther Olson, Chair
 Shawn Gratz
 Myron Heittola
 Esther Huntoon
 Lori Krug
 *Greg Wolff

CARE & SHARE

Betty Goke
 Esther Huntoon
 Betsy Jacobs
 *Shawn Kippley
 Kathy Marty
 Joan Root

WOMEN'S GUILD

Mary Boley, President
 Betsy Jacobs, Secretary
 Sylvia Zentner, Treasurer
 *Jean Heinzman

WORSHIP, MUSIC AND ART**WORSHIP/MUSIC/ART COMMITTEE**

*Barb Babler
 *Kim Goke
 Kathy Stenseth
 Pastor Ken Schaub

ORGANISTS

Barb Babler
 Terry Croft
 Kim Goke

CHOIRS

Barb Babler, Vocal Choir
 Director and Bell Choir
 Director
 Kim Goke, Solo
 Accompanist

MISSION AND OUTREACH**MISSION & OUTREACH COMMITTEE**

Kathy Marty, Chair
 Jean Hodel
 *Shawn Kippley
 Karen Meier

PASTORAL SEARCH COMMITTEE

*Tanya Helwig, Chair
 Cassidy Heller, Youth Member
 *Paul D. Hodel
 Richard Kittleson
 Tricia Kittleson
 Lori Krug, Chaplain
 Kathy Marty
 Michelle Mullen, Communication Lead
 *Sandy Van Kleeck, Secretary
 Rev. Kenneth L. Schaub, Pastoral Advisor

1.4 COUNCIL PRESIDENT'S REPORT

Council President Annual Report – 2017

First United Church of Christ Council had a blessed 2017. We continued to serve our members, help grow our church and reach out to the local and world-wide communities.

Please join the Council in congratulating Interim Pastor Ken Schaub on his 1st year anniversary with First UCC! Pastor Ken has done a wonderful job as our Interim Pastor and leading First UCC through the process of calling a settled Pastor.

The Council worked with many talented and dedicated individuals and all our committees on projects that included:

Building & Grounds: Restoration & Renovation project (in progress): fixing basement water leaks, remodeling the basement kitchen, replacing windows, painting the sanctuary and upgrading the Audio/Visual system. The kitchen remodeling would not have been possible without the time and talents donated by Cory Kelly, Neal Gehin, Rodger Goke, Tanya Helwig and many others.

Finance Committee: being good shepherds of First UCC finances and creating the 2018 budget.

Search Committee: searching for, interviewing and vetting candidates for our Settled Pastor position.

Worship, Arts & Music: finding and purchasing a beautiful baby grand piano to inspire us during Worship Service and special musical events.

The First UCC Council looks forward to another productive year in 2018. With Gods' blessing, we will work to strengthen our faith, increase our love for one another and spread the Word of God!

"God is good, all the time! All the time, God is good!"

Respectfully,

Paul D. Hodel
Council President

1.5 COUNCIL SECRETARY'S REPORT

2017 COUNCIL SECRETARY ANNUAL RECAP FIRST UNITED CHURCH OF CHRIST

- Jan. 23 - Started phase 1 for our AV set up. Annual meeting scheduled for the 29th. Another group is now working with us for the Friends of State Street. Thank you notes sent to those who made an intention of giving for general fund and/or the Revitalization and Restoration Appeal. Meeting with Pastor Ken after settled to plan for coming year.
- Feb. 13 - Budget accepted for the coming year. New members for council and endowment nominated. Council started working with Rev. Joanne Thomson and S.W. Conference to start search for a new pastor. Plans started for the kitchen renovation.
- Mar. 20 - Rev. Joanne Thomson attended the council meeting to discuss the search committee process. Audio system installed. Discussed guidelines for the Shepherd's Fund. Listening posts set up with Pastor Ken for the 21st and 23rd - "Time of Transition".
- April 17 - Confirmands completed their Statements of Faith. (9) individuals were chosen for the Search Committee. Copier was paid off.
- May 15 - Cookout scheduled by Fundraising for June 24. Rev. Todd Hackman joined the council meeting to discuss the timeframe for repayment of the loan. New Member Sunday on May 21 for four new families. Slight change in plans for the continued work on the kitchen project.
- June 19 - Christian Ed. reviewed the Sunday school curriculum. Memorial discussed the designated funds that had been given for baby grand, audio upgrades and the R&R project. Baby grand was purchased. Finance worked on compensation package for Pastor Ken.
- July 17 - Council discussed changing out a long pew for a short one up front to accommodate a wheelchair. Building and Grounds made the change. Plans for kitchen revised and sent out for bids. Search Committee worked on the church profile for July 26 completion date.
- Aug. 21 - Raffle license renewed for the baskets at church dinner. "One Room School" curriculum packets ordered for various ages for Sunday School. Church profile was sent to Rev. Joanne Thomson for review. Chris Copeland resigned from council. List made for possible new members. Stewardship started the fall campaign "Journey to Generosity, The Way of Jesus".
- Sept. 18 - Stewardship Sunday set for Oct. 15. Start date for raffle ticket sales was set for October. Sunday school started Sept. 10. Discussed and agreed on communion table being moved to the sanctuary. Endowment reviewed the scholarship process. State Street sandwich making was Sept. 9. Set the date for fall clean-up prior to church dinner on Nov. 4.
- Oct. 16 - Christian Ed. planning a family skit rather than a pageant for December. Sunday school offering was donated to the Giving Tree and after Christmas it would go to the food pantry. Women's Guild purchased carts, coffee pot and pans. Eleven profiles were received by the Search Committee. Interview process started. Was voted on that First Church would no longer participate in the Ecumenical Community Picnic Service. Three positions for council and two for Endowment will need to be filled in 2018.

Nov. 20 - Electrical upgrade for kitchen and other areas in the building was discussed and also replacement of the water fountains. Window coverings will be checked out. Family Christmas Gala scheduled for Dec. 10. Final draft for the budget was completed and presented to the council for discussion at their Dec. meeting. Hannah Circle assembled and distributed Christmas cookie plates. The organ was tuned. Tuning will be budgeted in the future. Search Committee received a total of (17) profiles. Skype interviews scheduled. Church dinner was held on Nov. 11. Third quarter payment for the Parsonage Fund and OCWM were made. The Parsonage Fund will be totally paid by end of year.

Dec. 18 - Carpet cleaning has been scheduled for Jan. 8. Projects that still need to be done are the sanctuary painting, window replacement in the addition portion of the church, and office heat and air conditioning. Christian Ed. leaders for the spring will be DeLynn Palmer and Karisa Hurst. Membership list will be reviewed by Stewardship Committee. Review and approve 2018 budget. Memorial Sunday is Jan. 21. Blinds for the basement were discussed and approved by council for the kitchen.

Blessings to all for a Very Happy New Year!
Submitted by,
Shawn Kippley, Council Secretary

1.6 MINUTES OF 2017 ANNUAL MEETING

FIRST UNITED CHURCH OF CHRIST ANNUAL MEETING - JANUARY 29, 2017

Annual meeting was held following the 9:30 service. Council President, Paul Hodel called the meeting to order and Pastor Ken opened with prayer.

Ron Babler made motion to dispense the reading of the 2016 Annual Meeting Minutes, Ralph Jacobs seconded, carried.

Esther Olson made motion to accept the 2016 Annual Report, Greg Wolff seconded, carried.

Adoption of the 2017 Budget Proposal

Ron Babler thanked Rodger Goke for his many years of service and also Kathy Stenseth for all the additional time and help she has put forth this year. The budget included a 4% Pastoral Ministry increase. 3% will be for the new minister and also the increase of administrative costs hours per week and wage from \$13.50 hr. to \$14.00. Dick Kittleson made motion to accept budget, Barb Babler seconded, carried.

Council Resolution

Esther went over the resolution that was attached to everyone's 2016 Annual Report. It allows the outgoing council members, Paul Hodel and Shawn Kippley to stay on another year to maintain the continuity. Chris Copeland made the motion to approve the Resolution, Wally Boley seconded, carried.

Election of New Council Members

Chris Copeland also agreed to serve a second 3 year term. Barb Babler and Greg Graves were nominees for Council. Mary Austin made motion to close the nominations, Donna Christen seconded, carried.

Election of Endowment Committee Members

Jean Heinzman thanked Mary Austin and Gary Hintch for serving two, 3 year terms. Mitch Heller and Karisa Hurst were nominees. Ron Babler made the motion to close the nominations, Esther Olson seconded, carried.

Building and Grounds Update

Rodger Goke will be the liaison for any questions, concerns or suggestions to take back to Cory Kelly and Neal Gehin. Rodger covered the topic of the kitchen. Foundation is fine but the area by the cross is where the water is coming in. That issue will be addressed hopefully in February. Need to iron out the issues in reference to the stoves etc. in the kitchen and then we can proceed. Will get the Steering Committee back together to gather bids and information to bring back to the congregation.

Kerry Van Kleeck went over the topic of the audio (speakers, CD's and DVD's, burner, training support). Microphones were checked and they are fine. They will just need adjustments with the new equipment. Speakers will be placed in the front in each corner and also up in the balcony on each side. Want to have finished by Easter. Ron Babler has discussed the finances with Union Bank and Trust. Chris Copeland mentioned that we have funds already for the Restoration and Revitalization from family commitments. Juanita reminded everyone they need to make mention in the notes area on your check if you want offering to go to this project....R & R is sufficient.

Greg Wolff made motion to move ahead with the audio bid of \$7,170.32, Mary Austin seconded, carried.

New Business for 2017

Council will be working with the S.W. Conference and Rev. Joanne Thomson to start our search for a new pastor. Anyone interested in being on the search team, please let a council member know.

Esther Olson made motion to adjourn, Juanita Harbort seconded, carried.
Closed with Prayer in unison.

God Bless - Respectfully submitted by: Shawn Kippley, Council Secretary

1.7 TREASURER'S ANNUAL REPORTS**FIRST UCC TREASURER'S ANNUAL RECEIPTS-2017
GENERAL FUND**

BALANCE, JANUARY 1, 2017

\$17,568.60

Receipts: Some receipts offset expenses

Sunday Offerings	\$128,855.25
OGHS	\$460.00
Christmas Fund	\$394.00
Lenten Folders	\$204.50
Neighbors In Need	\$195.00
Plants	\$399.00
Designated Missions	\$2,721.04
Misc. Income	\$2,273.30
Church Dinner Receipts	\$10,544.50
Pastors Interest Payment	\$1,050.00
Giving Tree	\$1,747.50
Copier	\$775.00
Total Receipts	\$149,619.09

Balance Available for Disbursement

\$167,186.69

Disbursements:

	2017 Budget	2017 Actual
Youth Ministry		
Sunday School	\$400.00	\$252.25
Confirmation Materials	\$400.00	\$398.75
Youth Fellowship	\$100.00	\$0.00
Worship		
Choir Director	\$240.00	\$0.00
Organists	\$1,600.00	\$1,160.00
Music, Copyright	\$250.00	\$0.00
Worship Supplies	\$1,400.00	\$1,056.99
Social Sec/Medicare	\$333.00	\$88.74
Offering Supplies	\$300.00	\$206.03
Pulpit Supply	\$500.00	\$138.00
Pastoral Ministry		
Salary/Housing Allow	\$53,940.00	\$62,222.72
Social Security	\$3,345.00	\$2,632.08
Disability, Life Ins	\$680.00	\$0.00
Pension Contribution	\$7,552.00	\$9,313.03
Mileage Allowance	\$600.00	\$873.71
Meetings, Cont. Ed	\$500.00	\$525.00
Pastors Health Ins	\$12,000.00	\$125.00
Cell Phone	\$600.00	\$600.00

Administrative Costs

Administrative Support	\$14,560.00	\$13,430.82
Social Sec/Med	\$1,114.00	\$1,183.22
Treasurer	\$950.00	\$950.00
Financial Secretary	\$950.00	\$950.00
Social Sec/Med	\$344.00	\$344.00
Office Supplies	\$7,500.00	\$5,671.31
Gifts	\$100.00	\$0.00
Assoc Meetings/Conf	\$100.00	\$0.00
Workers Comp	\$500.00	\$576.50
Office Equipment/Soft.	\$1,500.00	\$137.14

Mission Support

Wisconsin Conf-OCWM	\$6,000.00	\$6,000.00
Retired Pastors-Ins	\$2,500.00	\$1,381.24
Southwest Assoc Dues	\$1,058.00	\$1,187.50
Mission/Outreach	\$100.00	\$513.50
Designated Missions	\$4,300.00	\$4,713.65
Evangelism	\$750.00	\$332.19

Church Maintenance

Property Repairs/Maint	\$750.00	\$855.00
Janitor Salary	\$3,120.00	\$2,744.95
Soc Security/Med	\$240.00	\$201.96
Janitor Supplies	\$400.00	\$281.68
Natural Gas	\$5,000.00	\$2,919.71
Water	\$700.00	\$713.45
Phone/Internet	\$2,600.00	\$1,502.76
Electricity	\$3,500.00	\$4,300.43
Church Insurance	\$5,000.00	\$5,244.50
Elevator Contract	\$2,400.00	\$2,469.24
Fire Extinguishers/Inspet	\$150.00	\$129.20
Workers Comp	\$500.00	\$576.50

Miscellaneous Expenses

Parsonage Fund Repay	\$1,500.00	\$1,500.00
Congregational Care	\$100.00	\$0.00
Church Dinner Expenses		\$4,592.39
Parsonage Fund-Pastors Int		\$1,050.00

Total Disbursements**\$146,045.14****General Fund Balance, December 31, 2017****\$21,141.55**

FIRST UCC TREASURER'S ANNUAL REPORT-2017

IMPROVEMENT FUND-MAINTENANCE AND CAPITAL FUNDS

MAINTENANCE			
BALANCE JANUARY 1, 2017			\$5,212.93
RECEIPTS:			
General Donations	\$4,120.30		
Interest Earned	\$2.52		
Fund Raisers	\$1,908.22		
Fund Raising Acct Balance	\$419.00		
Total Receipts	\$6,450.04		
Disbursements:			
General Fund	\$234.00		
Car Wash cards	\$600.00		
Change for Fund Raisers	\$350.00		
Guild-Fund Raising Balance	\$1,219.87		
Sierra Concepts	\$558.97		
AudioContractors	\$5,097.25		
Vaccum Cleaner	\$519.95		
Total Disbursements	\$8,580.04		
Balance January 31, 2017			\$3,082.93
CAPITAL			
BALANCE JANUARY 1, 2017			\$8,398.61
RECEIPTS:			
Interest	\$2.52		
Deposits for R & R account	\$36,144.00		
Total Receipts	\$36,146.52		
Disbursements:			
Transfers to R & R Account	\$39,839.30		
Total Disbursements	\$39,839.30		
Balance January 31, 2017			\$4,705.83
Total Account Balance as of December 31, 2017		*	\$7,788.76

*Includes \$419.00 Fund Raising Balance

R & R Project Financial Statement—First UCC—Through December 2017

Income:	
Deposits through November 2017	\$34,292.17
December 2017 Deposit	\$10,552.00
Advance from loan	\$70,000.00
Total Income	\$114,844.17
Disbursements:	
Audo Contractors-Initial Payment	\$5,097.25
Audo Contractors-Final Payment	\$2,744.68
April-June Interest Payments	\$54.09
Payment of Appraisal Fee	\$3,695.00
Payment to Quality Cabintes and Building Permit	\$6,158.10
J Davis Plumbing-Initial Payment	\$8,000.00
Interstate Sawing-Concrete in Kitchen	\$1,531.25
Erin Nolden-Plans	\$350.00
Oct Interest	\$16.15
Reebs Electric	\$560.00
Patriot Glass	\$9,300.00
Ron Vendon	\$550.00
Quality Custom Cabinets	\$6,500.00
J Davis Plumbing	\$4,000.00
Rockweiler Insulation	\$913.00
Tri County Appliance	\$8,894.00
Counter Space LLC	\$10,750.00
Coyle Carpet	\$1,696.97
Hawkinson Drywall	\$1,510.00
Birm Assoc-Electrical	\$12,772.00
Nov interest	\$33.37
J Davis Plumbing-Final	\$2,500.00
Dreamdesign LLC	\$2,431.00
Sequoia Bldrs	\$400.00
Joe Warden Painting	\$1,685.00
Gehin Custon Homes	\$7,875.32
Interest	\$173.30
Budget Blinds	\$740.00
Gehin Custom Homes	\$681.00
Total Disbursements	\$101,611.48
Total Cash in Account-12/31/2017	\$13,232.69
Total Draws Against Construction Loan	\$70,000.00

1.8 CHURCH ADMINISTRATIVE REPORT – EVENTS/LISTINGS**CHURCH ADMINISTRATIVE ASSISTANT'S REPORT 2017****JANUARY**

Weekly: Worship Service, Confirmation Class, Middle School Youth, Fellowship Time, Bell Choir, Chimes email, Birthday cards/other cards

Monthly: Holy Communion, "The Anchor" Newsletter, Church Council, Grief Booklets

Twice Monthly: Sunday School

Committees: Fundraising, Endowment

Special: Hymn Sing Service with Barb Babler, Chris Copeland, and Esther Olson leading on January 1, Remembrance Sunday--Service & Luncheon, Annual Report, Annual Meeting (Resolution passed that Paul Hodel and Shawn Kippley be kept on Council for up to 18 months during interim, Chris Copeland re-elected for a second term, Barb Babler and Greg Graves elected to first terms; Endowment Committee members elected: Mitch Heller and Karisa Hurst), 2017 Women's Guild Booklet distributed/mailed

Interim Minister: Rev. Kenneth L. Schaub started with us on January 8

Use of Building: Dayton Dairylanders 4-H Club, Belleville Busy Beavers 4-H Club

FEBRUARY

Weekly: Worship Service, Confirmation Class, Middle School Youth, Fellowship Time, Bell Choir, Chimes email, Birthday cards/other cards

Monthly: Holy Communion, "The Anchor" Newsletter, Church Council, Finance Committee, Grief Booklets

Twice Monthly: Sunday School

Committees: Worship/Arts/ Music

Mission & Outreach: Friends of the State Street Family (sandwich making/meal preparation), "Souper Bowl of Caring" \$ donations/food drive, Family Promise of Green Co., Shrove Sunday Pancake Breakfast sponsored by Sunday School for mission project to be determined

Special: AV Update/Installation

Interim Minister: Pastor Ken Schaub

Funeral: Anna Klassy, February 23 at Becker-Beal Funeral Home

Community Use of Building: Dayton Dairylanders 4-H Club

MARCH

Weekly: Worship Service, Confirmation Class, Middle School Youth, Fellowship Time, Bell Choir, Chimes email, Birthday cards/other cards

Monthly: Holy Communion, "The Anchor" Newsletter, Church Council, Finance Committee, Grief Booklets

Twice Monthly: Sunday School

Committees: Restoration & Revitalization Steering Committee/Kitchen Committee

Mission & Outreach: Friends of the State Street Family (sandwich making/meal preparation), Lenten Folders, One Great Hour of Sharing Offering, Confirmation Class Collection of Toiletries for Belleville Food Pantry and Friends of the State Street Family (March 5th and 12th)

Special: Installation of Council Members Barb Babler, Chris Copeland & Greg Graves, AV Update/Installation, UCC Yearbook Information Submitted, Service of Blessing for a Time of Transition, "This Time of Transition" Listening Posts (March 21, 23-2 sessions), Women's Guild Bake-less Bake Sale Mailing

Interim Minister: Pastor Ken Schaub

Guest Minister: Rev. Joanne Thomson, March 19th - Service of Blessing

Memorial Service: Scott Schulz, March 16

Community Use of Building: Dayton Dairylanders 4-H Club

APRIL

Weekly: Worship service, Confirmation Class, Middle School Youth, Fellowship Time, Bell Choir, Chimes email, Birthday cards/other cards

Monthly: Holy Communion (4), "The Anchor" Newsletter, Church Council, Finance Committee, Grief Booklets

Twice Monthly: Sunday School (last day April 23rd)

Committees: Stewardship/Membership, Women's Guild Spring Meeting, Fundraising, Endowment, Pastoral Relations, Kitchen Design Team (R & R)

Special: Maundy Thursday Service April 13th, Good Friday Service April 14th, 6:30 am Easter Sunrise Service in Library Park April 16th, Witness Sunday – Confirmation students share Personal Statements of Faith April 23rd, Confirmation Sunday April 30th, AV Training Session

Interim Minister: Pastor Ken Schaub

Guest Leader: Esther Olson, Easter Sunrise Service

Community Use of Building: Dayton Dairylanders 4-H Club, Toddler Time

MAY

Weekly: Worship Service, Fellowship Time, Chimes email, Birthday cards/other cards

Monthly: Holy Communion, "The Anchor" Newsletter, Church Council, Finance Committee, Grief Booklets

Committees: Memorial

Search Committee: May 3, 10, 17, 24, 31

Mission & Outreach: Friends of the State Street Family (sandwich making/meal preparation), Blanket Sunday (CWS Offering)

Special: SW WI Assoc. UCC Annual Meeting May 6th, Garage/Plant/Bake Sale May, Root Beer Floats on Mother's Day, High School Graduates' Recognition Sunday, New Members Informational Meeting, New Members Welcome Sunday, Blessing of the Search Committee

Interim Minister: Pastor Ken Schaub

Community Use of Building: Dayton Dairylanders 4-H Club, Toddler Time, Belleville School District Advance Placement Testing (8 days)

JUNE

Weekly: Worship Service, Fellowship Time, Chimes email, Birthday cards/other cards

Monthly: Holy Communion, "The Anchor" Newsletter, Church Council, Finance Committee, Grief Booklets

Committees: Endowment, Kitchen Design Team (R & R)

Search Committee: June 12 & 21

Mission & Outreach: Friends of the State Street Family (sandwich making/meal preparation), Strengthen the Church Offering

Special: Delivery of Baby Grand Piano--June 2, WI Conference Annual Meeting SH/FT: Our Unfolding Story--June 9-11, Town Hall Meetings--June 4, 7, & 11, Strawberry Sundaes on Father's Day, Audio contractors calibrated & tested sound system, Fundraising Committee sponsored cook-out at Burreson's

Interim Minister: Pastor Ken Schaub

Community Use of Building: Dayton Dairylanders 4-H Club, Toddler Time, Driver's Education Classes (10 days)

JULY

Weekly: Worship Service, Fellowship Time, Chimes email, Birthday cards/other cards

Monthly: Holy Communion, "The Anchor" July/August Newsletter, Church Council, Finance Committee, Grief Booklets

Committees: Pastoral Relations met with Finance, Building & Grounds, Endowment

Search Committee: July 12, 19, & 26

Mission & Outreach: Friends of the State Street Family (sandwich making/meal preparation)

Special: Stew./Membership sponsored Food Stand at "Music in the Park", Building & Grounds replaced a long pew in front row with a shorter pew

Interim Minister: Pastor Ken Schaub

Memorial Service: Alvah Weaver, Jr., July 7 at Becker-Beal Funeral Home-Rev. Ken Schaub officiating

Community Use of Building: Dayton Dairylanders 4-H Club

AUGUST

Weekly: Worship Service, Fellowship Time, Chimes email, Birthday cards/other cards

Monthly: Holy Communion, "The Anchor" Newsletter, Church Council, Grief Booklets

Committees: Stewardship/Membership, Christian Education, Fundraising

Search Committee: August 9 & 30; Church Profile published August 22

Mission & Outreach: Friends of the State Street Family (sandwich making/meal preparation)

Special: Community Picnic Ecumenical Service at St. Francis of Assisi, Hymn Fest Service Aug. 20, Kitchen Remodel/R & R Update Presentation Aug. 20

Interim Minister: Pastor Ken Schaub

Guest Preachers: Barb Babler (Aug. 20) and Esther Olson (Aug. 27)

Funeral: Joseph Keifenheim, Aug. 1

Community Use of Building: Dayton Dairylanders 4-H Club

SEPTEMBER

Weekly: Worship Service, Sunday School (1st Sun. Sept. 10) (3 weeks), Fellowship Time, Chimes email, Birthday cards/other cards

Monthly: Holy Communion, "The Anchor" Newsletter, Church Council, Finance Committee, Grief Booklets

Committees: Church Dinner Chairs' Meeting, Pastoral Relations

Search Committee: Sept. 6, 13, 20 & 27

Mission & Outreach: Friends of the State Street Family (sandwich making/meal preparation)

Special: Sunday School Registration, Orientation meeting for confirmation students and parents, 1st Stewardship Mailing with Info sheet on R & R (Q & A), Hannah Circle sponsored birthday/bingo party at New Glarus Home, R & R work in basement

Interim Minister: Pastor Ken Schaub

Community Use of Building: Dayton Dairylanders 4-H Club

OCTOBER

Weekly: Worship Service, Confirmation Class, Middle School Youth, Sunday School, Fellowship Time, Chimes email, Birthday cards/other cards, Bell Choir

Monthly: Holy Communion (World Communion Sunday), "The Anchor" Newsletter, Church Council, Finance Committee, Grief Booklets

Committees: Women's Guild Fall Meeting, Church Dinner Chairs' Meeting, Endowment, Pastoral Relations

Search Committee: October 4, 11, & 18

Mission & Outreach: Collecting donations for UCC Disaster Ministries, NIN Offering, Friends of the State Street Family (sandwich making/meal preparation), Information Booth/free ice cream at Belleville's Fall Fest

Special: 2nd Stewardship/R&R mailing with "Intention of Giving" cards, Stewardship Sunday, Dinner Tickets/Info Mailing, R & R work in basement, Remembrance of Pastor Heide on Oct. 15

Interim Minister: Pastor Ken Schaub

Guest Minister: Ms. Mary Gafner, Oct. 22

Memorial Service & Visitation: Helen Reinhardt, Oct. 13

Community Use of Building: Dayton Dairylanders 4-H Club

NOVEMBER

Weekly: Worship Service, Confirmation Class, Middle School Youth, Sunday School, Fellowship Time, Chimes email, Birthday cards/other cards, Bell Choir

Monthly: Holy Communion, "The Anchor" Newsletter, Church Council, Finance Committee, Grief Booklets

Committees: Christian Educ., Worship/Arts/Music

Search Committee: Nov. 1, 8, & 13

Mission & Outreach: Giving Tree Tags available

Special: Church Clean-up Day Nov. 4, Church Dinner set-up, All-Church Dinner with Gift Basket Raffle and Bake Sale, R & R work in basement with kitchen ready for Church Dinner, Ecumenical Community

Thanksgiving Service at Grace United Methodist Church

Interim Minister: Pastor Ken Schaub

Community Use of Building: Dayton Dairylanders 4-H Club

DECEMBER

Weekly: Worship Service, Confirmation Class, Middle School Youth, Sunday School, Fellowship Time, Chimes email, Birthday cards/other cards, Bell Choir

Monthly: Holy Communion (3), "The Anchor" Newsletter, Church Council, Finance Committee, Grief Booklets

Committees: Church Dinner Chairs, Building & Grounds

Search Committee: Dec. 6, 13, & 27

Mission & Outreach: Friends of the State Street Family (sandwich making/meal preparation), Giving Tree, Christmas Fund Offering, MSY rang bells at Salvation Army Kettle at Burreson's

Special: Deck the Halls—decorate church for Christmas season, Mailing of Follow-up Stewardship/2018 Giving Letter, "Family Christmas Gala" with the Bell Choir and skits by Sunday School and MSY, Service with Special Music, Love Feast - Cookie Communion and Traditional Christmas Eve Services, Distribution of Cookie Plates by Hannah Circle, Service of Lessons & Carols and Bell Choir

Interim Minister: Pastor Ken Schaub

Guest Leader: Barb Babler led Service of Lessons & Carols on December 31

Funeral: James Root, December 30

Community Use of Building: Dayton Dairylanders 4-H Club

BULLETIN SPONSORED BY:

09/10/2017 Wally & Mary Boley, in honor of their 62nd wedding anniversary

1.9 CONGREGATIONAL STATISTICS**Active Members:** 254**Inactive:** 170**Nursing Homes:** 8**Students:** 30**Average Worship Attendance:** 65**BIRTHS**Annalise Belle Campbell
Fiona Rose BorchardtFebruary 15, 2017
October 15, 2017Parents: Paul & Gerri Campbell
Parents: Brien & Beth Borchardt**NEW MEMBERS**Brien & Beth Borchardt Family
Kristin Knutson
Michael & Jill Mousseau Family
Eric & Lynda Shrader Family
Drew ShraderMay 21, 2017
May 21, 2017
May 21, 2017
May 21, 2017
May 21, 2017**CONFIRMATION CLASS 2017**Brandon Graves
Erin Kittleson
Austin Kramer
Jenna Shrader

Confirmed: April 30, 2017

TRANSFERS OF MEMBERSHIP

Richard and Joyce Lapp

March 29, 2017
to Second Congregational Church UCC, Rockford, IL**DEATHS**Anna E. Klassy
Scott A. Schulz
Alvah H. Weaver, Jr.
Joseph C. Keifenheim
Helen Dell Reinhardt
James W. RootFebruary 19, 2017
March 11, 2017
July 1, 2017
July 27, 2017
October 9, 2017
December 26, 2017Age 97
Age 53
Age 88
Age 56
Age 70
Age 84

2.0 ADMINISTRATIVE TEAMS REPORTS

REPORTS OF COMMITTEES, GROUPS AND CIRCLES

2.1 BUILDING & GROUNDS

Building and Grounds Committee/2017 Annual Report

The committee members are Herb Blaser, Jerry Butts, Don Boley, Tony Buol, Jeff Christen, Brian Duffin, Steve Erb, Neal Gehin, Jeff Hendrickson, Ralph Jacobs, Cory Kelly and Kerry Van Kleeck.

Below is a listing of projects completed or underway during 2017.

The wall cracks in the kitchen were repaired and the water leak problem from the front of the church has been resolved.

Cory Kelly and Neal Gehin provided their expertise in the completion of our church's kitchen remodeling project. The kitchen remodel project was completed in time for our annual church dinner.

New windows have been installed in the kitchen and the old fellowship hall. These windows are commercial grade. The upgrade of other windows in the church will be similar if not the same. This is a future R&R project waiting for council approval.

One short pew was installed in the front of the church. We will be installing two more short pews to accommodate wheel chairs. We also have a person lined up to redo the carpet once the pews have been switched.

Our sound system is complete with the exception of being able to record the services on cd. We have been working to resolve this issue; it will be done in 2018.

Carpet cleaning will be scheduled for January of 2018.

Painting projects will also be scheduled for 2018. The immediate project will be the wall behind the altar cross.

The electrical systems for the church are going to be reviewed by a licensed electrician. There were issues discovered during the kitchen remodel that need to be addressed. This review will be done the first part of 2018.

We have also received bids on ductless heat and air conditioners for the pastor and secretary offices. We will try to schedule this for 2018.

The B&G committee members have contributed time, efforts, talents and resources in 2017 to maintain our church building and grounds. The committee members along with a number of other people have worked hard to keep our church's building and grounds in such nice shape.

First Church is very fortunate to have so many people that contribute to the maintenance and upkeep and we are very thankful and blessed.

Respectfully Submitted,

The First United Church of Christ Building and Grounds Committee

2.2 CHURCH DINNER REPORT

The goals for the Church Dinner are:

1. Fulfill our annual mission goals as set in the Annual Budget.
2. Provide good food and hospitality for those who come.
3. Provide time for fellowship and cooperation with our members and friends who participate in preparing, serving, and cleaning up.

In the fall, church dinner committee chairpersons met to review the tasks relating to the Church Dinner preparation, serving, and clean-up. The Church Dinner Team consisted of: Donna & Jeff Christen, Betty Goke, Kim & Rodger Goke, Michele & Shawn Gratz, Jean Heinzman, Lois & Myron Heittola, Tanya Helwig, Paul Hodel, Betsy & Ralph Jacobs, Shawn Kippley, Kathy Stenseth, Kerry Van Kleeck, and Greg Wolff. The overall chairperson was Pam Kelly.

The Church Dinner was held on November 11, 2017 and about 679 people were served, compared to 770 the year prior. The menu items were turkey, ham, meatballs, mashed potatoes and gravy, green beans, coleslaw, cheese, buns and lots of homemade pies. This was the 35th annual dinner. Total Receipts were \$10,144.50 with \$4,592.39 in expenses for a net profit of \$5,552.11. (The net profit in 2016 was \$6,302.97.) Many members generously donated time, funds and food donations to the event.

2.2.1 CHURCH DINNER FINANCIAL REPORT

2017 Church Dinner Report

RECEIPTS:	
TOCKETS AND DONATIONS	\$10,544.50
LESS: CASH FOR CHANGE	\$400.00
TOTAL RECEIPTS	\$10,144.50
DISBURSEMENTS:	
ECONOPRINT	\$120.59
POST OFFICE-MAILING TICKETS	\$38.03
BURRESONS-FOOD	\$2,730.27
SUPPLIES	\$318.48
WOLFF'S FARMS-TURKEYS	\$974.89
BELLEVILLE SCHOOLS-COLESLAW-POTATOES	\$290.00
PAM KELLY-COLESLAW	\$120.12
TOTAL DISBURSEMENTS	\$4,592.39
NET PROFIT	\$5,552.11

2.3 ENDOWMENT FUND

ANNUAL REPORT
 ENDOWMENT INVESTMENT FUND
 DECEMBER 31, 2017

UC Investment Fund (UCIF)

Deposits Balance 01/01/17	\$51,717.00
No Investment Fund Deposits in 2017	\$0.00
Deposits Balance 12/31/17	\$51,717.00
Cost Basis 12/31/17	\$42,584.32
Market Value 12/31/17	\$64,981.76
2017 Investment Earnings (to be distributed in 2018)	\$1,260.24

Checking Account (UB&T)

Bank Statement Balance 01/01/17	\$591.97
Check #2024 from 2016 cleared in 2017	(\$250.00)
Reconciled Balance 01/01/17	*\$341.97

Receipts:

	***Designated Donation		
Donation-Todd Hackman (Heide Memorial) designated for 2017 Scholarship Disbursement	\$500.00		
Return of unspent 2015 donation - Giving Tree (UCC Fund)	\$151.69		
Investment Earning - UCIF (2016)	\$1134.01		
Interest Income - UB&T (2017) Cash Account	.30		
Total Receipts			\$1,786.00

Disbursements:**30% (\$340.20) - Scholarships, grants, church-related camps or leadership conferences:**

Scholarship-Amber Sies (***\$250.00+\$125.00-\$375.00) **		
Scholarship-Mikayla Cann (***\$250.00+\$125.00-\$375.00)**		
Church camp-\$90.20 (no applicant, to be re-allocated in 2018)**		

40% (\$453.61) - Community Outreach, world missions, grants to UCC for new church development, professional leadership, educational ministries, capital financing and institutions & agencies to which congregation relates, special programs for individuals in spiritual and/or economic need:

Family Promise (\$226.81+\$75.84)	\$302.65	
Belleville Food Pantry (\$226.80+\$75.85)	\$302.65	(\$605.30)

30% (\$340.20) - First Church Capital Improvements, Debt Reduction, or building maintenance:

Disbursement - R & R - UCC fund	\$340.20	
2015 Investment earning earmarked for disbursement to UCC general fund in 2017 for basement wall repair(*)	*\$341.31	(\$681.51)

Total Disbursements (2015/2016 Investment Earning/Interest):	(\$1,286.81)
---	---------------------

Checking Account (UB&T) - December 31, 2017 Balance	**\$841.16
---	------------

- * 01-01-17 Balance of \$341.97 includes \$.66 UB&T 2016 interest, plus \$341.31 (previously earmarked for disbursement for basement wall repair upon receipt of expense; disbursed in 2017)
- ** 12-31-17 Balance of \$841.16 includes \$.96 UB&T 2016/2017 interest, plus \$750.00 scholarship to be disbursed upon receipt of documentation, and \$90.20 church camp to be re-allocated in 2018.
- *** Donation of \$500.00 by Todd Hackman – specified for 2017 Scholarship disbursement.

Submitted: Jean Heinzman, Chairperson, Brenda Gehin, Secretary/Treasurer,
Committee Members: Karissa Hurst, Mitch Heller, Phil Fransen
Advisory Representative(s): Paul Hodel

2.4 FINANCE COMMITTEE

FIRST UNITED CHURCH OF CHRIST ANNUAL REPORT-FINANCE COMMITTEE 2017

2017 was again a stable financial year for First UCC. The year-end balance increased by over \$4,000.00 thanks in part to some individuals paying their 2018 donations in advance because of the new tax laws. Our budgeted receipts and disbursements were largely right on target.

Our challenge for 2018 will be the R&R Project, finishing all part of the project and then switching from the Construction loan to a Commercial loan which will require monthly payments.

We have finished our budget work for 2018 and an increase of 2.6% was presented to the Council, approved by them and will be presented for congregation approval at the Annual meeting.

The current committee consists of Ron Babler, Doug Myers, Esther Olson, Brenda Gehin, Juanita Harbort and Paul Hodel.

Again a word of appreciation to Kathy Stenseth for her tireless work and willingness to continue to step forward and keep the office running while we work to hire a new Pastor. Also thank you to the Finance Committee and Counting Team for their efforts.

2.5 FUNDRAISING COMMITTEE**FUNDRAISING COMMITTEE ANNUAL REPORT FOR 2017**

The Fundraising Committee members are Juanita Harbort, Betsy Jacobs, Shawn Kippley, Kathy Stenseth and Lori Yaun.

We had several Fundraisers in 2017. We had Easter Baskets, wooden tulips, a garage sale, Burreson's receipts, a cookout at Burreson's, and basket raffle and bake sale the night of the church dinner. We also sold Kwik Trip car wash cards, greeting cards and baby booties. The money was used to buy a new slicer for use at the church dinner.

We are still collecting the Burreson's receipts. We get 1% of the total receipts. Thank you to members and friends who turn receipts in to us.

We have a supply of Church ornaments for sale and there are still several hymnals remaining to be purchased In Memory of, In Honor of – or simply with your own name in the book.

Money turned into Improvement Fund (Maintenance). It is kept separate so we may use it for purchasing a slicer or other things needed:

04/16/2017	Easter Baskets	\$ 81.00
04/2017	Wooden Tulips	\$ 22.00
05/06/2017	Garage Sale	\$ 260.70
05/31/2017	Burreson's Receipts	\$ 302.95
06/23/2017	Cookout at Burreson's	\$ 250.22
10/02/2017	Car Wash Cards	\$ 230.00
11/11/2017	Basket Raffle at Church Dinner	\$ 554.00
11/11/2017	Bake Sale at Church Dinner	\$ <u>313.00</u>
	TOTAL FUNDRAISING	\$2,013.87

Betsy Jacobs, Fundraising Chairperson

2.6 MEMORIAL FUND

First United Church of Christ
Memorial Fund - 2017

Cash Balance on Hand December 31, 2016		\$19,449.79
Receipts:		
In Memory of:		
Dennis Lien	100.00	
Roland Sies	500.00	
Mary Lou Ryan	700.00	
Della Beil	1,500.00	
Pastor Heide Hackman	1,660.00	
John J. Baumgartner	300.00	
Other:		
Hymnal Memorials	24.00	
Ornament Receipts	<u>20.00</u>	
Total receipts		\$ 4,804.00
Disbursements:		
Baby Grand Piano	8,825.00	
Food Pantry	100.00	
Postage	84.60	
Restoration & Revitalization		
General	500.00	
Sound system	1,500.00	
Kitchen	1,525.00	
Windows	<u>620.00</u>	
Total disbursements		<u>\$13,154.60</u>
Cash Balance on Hand December 31, 2016		\$11,099.19
<p>During 2017 the Guild purchased a 100-cup coffee pot, 20-quart pot and cover and 2 serving carts in memory of Pastor Heide.</p>		
<u>Ornament Loan Outstanding</u>		
Balance January 1, 2017		\$1,282.50
2017 receipts		<u>20.00</u>
Outstanding Loan Balance December 31, 2017		\$1,262.50

The Memorial Committee met May 17, 2017. Discussion at the meeting centered on the purchase of a baby grand piano. Funds had been designated for this purchase and a piano was available at an affordable price. The Committee agreed it would be a good use of funds and the opportunity to purchase a piano for this amount might not be present again for a while. The Committee also discussed and agreed on donations toward the Revitalization and Restoration project.

There is a sizeable balance in the Memorial Fund and the Committee plans to work diligently in 2018 to appropriately utilize these memorials.

The Committee consists of: Sandy Fransen, Jean Hodel, Jean Heinzman, Kathy Marty and Kim Goke.

Respectfully submitted,
Kim Goke

2.6.1 DESIGNATED DONATIONS

New Hymnals

In Memory of:
Anna Klassy by: Ralph and Betsy Jacobs

Baby Grand Piano

In Memory of:
Della Beil
Mary Lou Ryan
Pastor Heide Hackman

Restoration & Revitalization - General

In Memory of:
Roland Sies

Restoration & Revitalization - Sound System

In Memory of:
Pastor Heide Hackman

Restoration & Revitalization - Kitchen

In Memory of:
Pastor Heide Hackman

Restoration & Revitalization - Windows

In Memory of:
Robert Stillman

Food Pantry

In Memory of:
Pastor Heide Hackman

100-Cup Coffee Pot, 20-Quart Pot and Cover, and 2 Serving Carts

In Memory of:
Pastor Heide Hackman

3.0 CHRISTIAN EDUCATION REPORTS

3.1 SUNDAY SCHOOL

Sunday School Youth Activities 2017

Sunday School classes were held the 2nd and 3rd Sundays of the month during winter/spring of 2017. We did skits for the "Souper Bowl of Caring Sunday" on February 5th. The Sunday School kids, with help from the Middle School Youth and Confirmation students, held a pancake breakfast for Shrove Sunday on February 26th. Our last day for class during this session was April 23rd. Thank you to our teachers Michelle Mullen, Cindy Lettman and Donna Christen, helper Amber Sies, and council representative Tanya Helwig.

In Fall of 2017, the Sunday School worked through the lessons in a new "One Room Sunday School" curriculum. Class was held every week of the month except for the first Sunday so that students could attend worship/communion with their families. The youth learned about Hannah, Samuel and David from the Old Testament. The young people decided to give their weekly offerings to the Giving Tree in November and also sang for the congregation. In December the students provided meaningful Christmas messages through two skits and several Carols. Leaders for Fall were: Barb Babler, council representative; Karisa Hurst, DeLynn Palmer and Sage Mullen.

3.2 MIDDLE SCHOOL YOUTH (MSY) & CONFIRMATION

Middle School Youth and Confirmation Ministry

The goal of confirmation education is to prepare young men and women to make their personal affirmation of their baptism. In so doing, we use curricula that will inform students of the basics of the Christian teaching and help integrate those basics into their journey of faith and life.

First Church has developed a ministry that combines the Middle School Youth and (typically) high school freshmen into two classes on Wednesday nights.

Coming into the Wednesday night setting a year ago, I was under the impression that Middle School Youth was a preliminary step to confirmation. I since discovered that Middle School Youth is essentially Sunday school transferred to Wednesday night. There is no expectation that it is preparation for confirmation.

There is a critical biblical illiteracy that has happened over the years so, my choice of curriculum has been Sparkhouse's "re:form" series. It is divided between Old Testament and New Testament personalities. Last year, we followed those New Testament individuals who were significant in the early church. This year, we are following the Old Testament personalities, some of whom may be familiar and others we don't often read about but were noteworthy in the salvation story leading up to Christ.

However, I question grouping 6th, 7th, and 8th graders in the same class. There is a noticeable emotional, developmental difference between, say, a 6th grade boy and an 8th grade girl. Quite honestly, the current class configuration leads to behavioral issues. Not only is it important in following the Safe Sanctuary policy of the congregation, but it is good to have a parent present for the MSY class to observe how the students interact. My recommendation would be a 5th-6th group and then a 7th-8th grade pre-confirmation group that would also involve worship participation.

Last year in the Confirmation Class, we continued with the curriculum that was being used. In May, we confirmed 4 young men and women: Brandon Graves, Erin Kittleson, Austin Kramer, and Jenna Shrader. In preparation for Confirmation they each wrote their own Statement of Faith which were all excellent expressions of faith.

This year, we are using *Confirm not Conform* as our curriculum. The goal of the material is to provide information, offer experiences and ask questions of students that will help them in articulating their faith. The curriculum also calls for mentors to walk with the confirmands during the course of the year and to join the class at various points to see what the kids have been doing as they then assist them in developing their own Statements of Faith.

Pastor Ken Schaub

4.0 CONGREGATIONAL VITALITY REPORTS

4.1 ESTHER CIRCLE

Over the past year the nursery was maintained with periodic cleaning and checking of supplies. The "Kiddie Kare" area was downsized a bit. Toys were sorted and gone through with a few items being removed. We hope this area provides a good space for those little ones needing a break/place to play. Also, a reminder that there is a baby changing station in the women's restroom downstairs.

Submitted by Esther Huntoon and Julie Duffin

4.2 STEWARDSHIP/MEMBERSHIP COMMITTEE

Annual Report 2017 Stewardship/Membership Committee

The Stewardship/Membership Committee works to raise awareness of the importance of giving a portion of our blessings back to God. We met three times in 2016, with collaboration in between.

The committee sponsored the food stand at Music in the Park in July.

Stewardship Sunday was October 15, using the theme of "Journey to Generosity, The Way of Jesus". Intention of Giving pledges were made for the general fund and the second year of the Restoration and Revitalization Appeal. 42 families responded with intention of giving to the General Fund of \$70,819 and 30 families with \$24,266 for the 2018 R&R Appeal.

Respectfully Submitted,

Stewardship/Membership Committee

Chris Copeland, Michele Gratz, Greg Graves, Lori Krug, Sandy Van Kleeck (Chair), Greg Wolff

4.2.1 RESTORATION AND REVITALIZATION APPEAL/R & R**Annual Report 2017
Stewardship/Membership Committee for the R & R Appeal**

The *Restoration & Revitalization Appeal* is a congregation wide effort by the members of First United Church of Christ to raise the funds needed to repair and revitalize our church building,

Projects that were completed or nearly completed this year are: Foundation restoration, kitchen revitalization and audio-visual upgrades. 2018 and beyond will include: Electrical upgrade, continued window replacement and heating/air conditioning units for offices.

Around \$45,000 has generously been received toward these projects, while costs have been around \$102,000. First Church has a construction loan to cover the differences. For 2018, 30 families have stated their intention of giving \$24,266 during the year. Next year's projects will add to the needed funds. With God's help we aim to borrow as little as possible and pay off the loan as soon as possible. We wish to welcome our neighbors and new pastor with a fresh building.

Respectfully Submitted,
Stewardship/Membership Committee for the R & R Appeal
Chris Copeland, Michele Gratz, Greg Graves, Lori Krug, Sandy Van Kleeck (Chair), Greg Wolff

4.3 WOMEN'S GUILD – SECRETARY'S REPORT**WOMEN'S GUILD SECRETARY'S REPORT 2017**

There were 2 formal meetings held in 2017, April and October.

The Guild hosts the Fellowship Time after church the first Sunday of the month. They also host the Senior Breakfast, Remembrance Sunday, prepare lunch after funerals and help with the Fellowship Time after the Sunday School Christmas program. The Guild furnishes Jesus' birthday cake and a cake for Confirmation Sunday. The Guild is available to help with anything that comes up during the year requiring our help. We have 2 Guild fundraisers which are the Bakeless Bake Sale and dish cloths. We also supply the "Upper Room" for our members and members in nursing homes and a large print copy for the New Glarus Home residents.

The Hannah Circle prepares cookie plates for our homebound members and members in nursing homes. Members of the church supply the homemade cookies. The Circle also hosts the Bingo Party at the New Glarus Home in September.

There are 2 women who take care of the Nursery.

We send gifts of money at Christmas time to several organizations and the men and women from our church that are in the service.

A Guild book is sent into the homes the beginning of the new year. We are thankful for several men who help us during the year.

The Guild gave a donation to the kitchen project in memory of Pastor Heide.

Betsy Jacobs, Guild Secretary

4.4 WOMEN'S GUILD – TREASURER'S REPORT**FIRST UNITED CHURCH OF CHRIST
ANNUAL REPORT - 2017 - WOMEN'S GUILD**

Balance on Hand January 1, 2017	2,229.59
---------------------------------	----------

Receipts:

Bakeless Bake Sale	1,003.00
Funeral Luncheons:	625.00
Schulz, Weaver, Keifenheim	
Reinhardt, Root (\$125.00 each)	
Donations:	195.00
Fund Raising	1,599.00
Dish Rag Sales	<u>80.50</u>
Total Receipts	3,502.50

Disbursements:

Upper Room	225.00
Supplies	513.21
Dish Rags	180.71
Postage	49.00
Gifts	475.00
Burreson's (donuts)	91.14
Miller's (cake)	128.97
Kitchen Supplies	<u>2,260.80</u>
Total Disbursements	3,923.83

Balance on Hand December 31, 2017	1,808.26
--	-----------------

Balance of CD of August 19, 2017	4,300.00
---	-----------------

Respectfully Submitted Sylvia Zentner, Treasurer

5.0 WORSHIP, MUSIC AND ART REPORT

5.1 WORSHIP, MUSIC AND ART

Worship/Music/Art Report 2017

We continued to meet seasonally to plan ways to enhance worship themes for Lenten, Easter, Pentecost and Advent services through special altar arrangements. We were especially pleased with the response from families and youth to decorate the church for the Advent Season. We were pleased to receive music from the Bell Choir and the Sunday School Youth. A special thank you to our organists: Kim Goke, Terry Croft and Barb Babler as they provided music throughout the year. And a very special thank you to the Memorial Committee for making it possible for the organists to include the new Baby Grand Piano in their music plans.

Members: Pastor Ken Schaub, Barb Babler, Kim Goke and Kathy Stenseth

6.0 MISSION AND OUTREACH REPORTS

6.1 MISSION/OUTREACH TEAM

Mission/Outreach Annual Report

Giving Tree - The 2017 Giving Tree Project supported 89 children in 37 families. The children ranged in age from birth to 18 yrs. Each child received gifts and/or gift cards and each family received a grocery gift card. Many church and community members worked together to make this happen.

Family Promise - Family Promise of Green County offers families in need food and lodging. First church members help with this program once every 3 months. The week the families stay overnight at Shepherd of the Hills Lutheran Church in New Glarus First church helps out by providing food, hosting, and overnight supervision for one of the nights.

BCAP - Donations collected through Lenten folders totaled \$204.50 and was forwarded to BCAP (Belleville Community Assistance Program).

6.2 LOCAL FOOD PANTRY SUPPORT

In 2017 the following was collected from our congregation and donated to the Belleville Food Pantry:

6 brown bags and 6 plastic bags = 104 pounds

187 cartons of white & chocolate milk that were “extras” from our Church Dinner

“Souper Bowl of Caring” on February 5, 2017 – our Sunday School and congregation donated:

13 plastic bags, 1 brown bag, 1 small plastic bag, and 8 cases of soup and vegetables =
198 pounds/23 pieces total

\$298.00 in monetary donations

6.3 FRIENDS OF THE STATE STREET FAMILY

In 2017 First Church continued its outreach efforts to support Friends of the State Street Family (FSSF). As part of its mission, FSSF feeds 100 - 200 homeless friends and neighbors every Saturday at 3 p.m. on State Street. The meal includes Nesco’s of hot food, sandwiches and other items.

First Church volunteers got together to make sandwiches for the Saturday meal on nine Saturdays in 2017. We provided ham, turkey and peanut butter/jelly sandwiches, sliced cheese, fresh fruit, to-go snacks (bags of chips, cereal bars, etc.), baked goods, and to-go drinks for 100. In December we used food left over from the church dinner and other donations which included providing two Nesco’s and one Crockpot of hot food. Clothing was donated as well.

A big THANK YOU to all of our volunteers for their donations and help preparing the food.

We are continuing this outreach in 2018. If you haven't had a chance to participate and would like to do so, we would very much appreciate food donations or assistance in the preparation. Sign-up is available at church the Sunday before, or contact the church office so we can add you to our email contact list. Thanks again to everyone for making this a successful mission of our church.

7.0 PASTORAL SEARCH COMMITTEE REPORT

7.1 PASTORAL SEARCH COMMITTEE

FIRST UNITED CHURCH OF CHRIST ANNUAL REPORT – SEARCH COMMITTEE 2017

The search committee includes the following 9 members: Tanya Helwig (Chair), Dick Kittleson, Tricia Kittleson, Michelle Mullen (Communication Lead), Cassidy Heller, Paul Hodel, Lori Krug (Chaplain), Sandy Van Kleeck (Secretary) and Kathy Marty.

The search committee held their first meeting on Wednesday, May 3, 2017. Rev. Joanne Thomson attended to walk us through the search process. We agreed the selection of any candidate will be unanimous. Rev. Joanne noted that this process could take 12 – 18 months.

The search committee has been meeting weekly to develop our Local Church Profile. We held 3 town hall meetings with the congregation, led by Pastor Ken, to help us gather information for our Local Church Profile. The profile describes who we are, who is our neighbor and what is God calling us to be (what are we looking for in a Pastor). The profile is 46 pages long. The Local Church Profile was completed August 10, 2017 and published August 23, 2017.

There have been monthly communications to the congregation (verbally) as well as written updates for our newsletters and council meetings.

We met with Rev. Joanne on Wednesday, September 6, 2017. We discussed confidentiality of potential candidates and reviewed the interview process (review candidate sermon's, practice interview, Skype interview, check references, etc). We also discussed how to decipher a candidate's profile.

The search committee developed several tools to help with the interview process. We developed a list of questions for the Skype Interview, questions for a full, detailed interview and a worksheet for rating candidates uniformly.

On September 24, the search committee hosted Fellowship time to celebrate the work that had been completed so far and to thank the congregation for their support.

A practice Skype interview was conducted with Rev. Dr. Mark Yurs from Salem UCC in Verona on October 4, 2017.

We started to receive profiles from potential candidates on September 6, 2017. Since then we have received and reviewed 21 profiles. We have conducted Skype interviews with 2 candidates and reviewed references for one potential candidate. We have communicated with all of the candidates regarding their status. We are in the process of scheduling a Skype interview with a candidate and have a second interview with a candidate in January, 2018. The 2018 budget includes \$5,000 for interview expenses.

Respectfully Submitted,

Tanya Helwig

8.0 ANNUAL MEETING AGENDA ITEMS**8.1 2018 BUDGET PROPOSAL**

FIRST UNITED CHURCH OF CHRIST							
2018 Proposed Budget-Actual Through December 2017							
CATEGORY	2015 Budget	2015 Actual	2016 Budget	2016 Actual	2017 Budget	2017 Actual	2018 Budget
YOUTH MINISTRY							
Sunday School/Bible School	\$500.00	\$317.53	\$400.00	\$259.08	\$400.00	\$252.25	\$300.00
Confirmation Materials	\$400.00	\$389.75	\$400.00	\$274.20	\$400.00	\$398.75	\$400.00
Youth Fellowship	\$100.00	\$0.00	\$100.00		\$100.00		\$100.00
	\$1,000.00	\$707.28	\$900.00	\$533.28	\$900.00	\$651.00	\$800.00
WORSHIP							
Choir Director	\$240.00	\$0.00	\$240.00		\$240.00	\$0.00	\$240.00
Organists	\$1,600.00	\$1,600.00	\$1,600.00	\$1,680.00	\$1,600.00	\$1,160.00	\$2,080.00
SS/Medicare	\$333.00	\$290.00	\$333.00	\$257.04	\$333.00	\$88.74	\$349.00
Music, Copyrights & Licenses	\$250.00	\$261.00	\$250.00	\$276.00	\$250.00	\$0.00	\$250.00
Worship Supplies	\$750.00	\$1,762.90	\$1,400.00	\$562.50	\$1,400.00	\$1,056.99	\$1,200.00
Pulpit Supply	\$175.00	\$0.00	\$500.00	\$1,728.00	\$500.00	\$138.00	\$500.00
Offering Supplies	\$300.00	\$627.57	\$300.00	\$248.42	\$300.00	\$206.03	\$300.00
	\$3,648.00	\$4,541.47	\$4,623.00	\$4,751.96	\$4,623.00	\$2,649.76	\$4,919.00
PASTORAL MINISTRY							
Salary	\$25,284.00	\$25,284.00	\$26,053.00	\$21,710.93	\$26,835.00	\$35,907.68	\$27,640.00
Housing Allowance	\$25,539.00	\$25,538.88	\$26,315.00	\$21,919.19	\$27,105.00	\$26,315.04	\$27,918.00
Social Security	\$2,555.00	\$2,556.04	\$2,632.00	\$2,193.37	\$3,345.00	\$2,632.08	\$3,427.00
Disability/Life Ins	\$680.00	\$0.00	\$680.00		\$0.00		\$680.00
Pastor's Pension/Annuity	\$7,115.00	\$8,850.65	\$7,332.00	\$5,777.56	\$7,552.00	\$9,313.03	\$7,778.00
Mileage Allowance	\$600.00	\$600.00	\$600.00	\$500.00	\$600.00	\$873.71	\$600.00
Continuing Education	\$500.00	\$309.50	\$500.00	\$345.00	\$500.00	\$525.00	\$500.00
Pastors Health Insurance	\$11,000.00	\$10,299.00	\$12,855.00	\$11,029.30	\$12,000.00	\$125.00	\$10,000.00
Cell Phone	\$600.00	\$600.00	\$600.00	\$500.00	\$600.00	\$600.00	\$600.00
Search Committee Expenses							\$5,000.00 ****
	\$73,873.00	\$74,037.07	\$77,567.00	\$63,975.35	\$78,537.00	\$76,291.54	\$84,143.00
ADMINISTRATIVE COSTS							
Administrative Support (20 hrs/w)	\$10,530.00	\$9,419.63	\$10,530.00	\$10,711.53	\$14,560.00	\$13,430.82	\$15,600.00 ****
Social Security/Medicare	\$806.00	\$720.64	\$806.00	\$877.40	\$1,114.00	\$1,183.22	\$1,248.00 ****
Workers Compensation Ins.	\$500.00	\$375.00	\$500.00	\$385.14	\$500.00	\$576.50	\$500.00
Office Supplies	\$5,000.00	\$7,118.29	\$7,500.00	\$8,440.13	\$7,500.00	\$5,671.31	\$6,000.00
Office Equipment/Software	\$2,000.00	\$0.00	\$750.00	\$5,046.12	\$1,500.00	\$137.14	\$1,500.00
Gifts	\$100.00	\$200.00	\$100.00	\$200.00	\$100.00		\$100.00
Association/Conference Mtgs.	\$100.00	\$0.00	\$100.00		\$100.00		\$100.00
Treasurers Salary	\$950.00	\$950.00	\$950.00	\$950.00	\$950.00	\$950.00	\$1,100.00 ****
Financial Secretary Salary	\$950.00	\$950.00	\$950.00	\$950.00	\$950.00	\$950.00	\$1,100.00 ****
SS/Medicare	\$344.00	\$343.90	\$344.00	\$344.00	\$344.00	\$344.00	\$396.00 ****
	\$21,280.00	\$20,077.46	\$22,530.00	\$27,904.32	\$27,618.00	\$23,242.99	\$27,644.00
MISSION SUPPORT							
OCWM	\$6,000.00	\$6,000.00	\$6,000.00	\$6,000.00	\$6,000.00	\$6,000.00	\$6,000.00
Retired Pastors Ins.	\$2,500.00	\$2,489.72	\$2,500.00	\$2,489.72	\$2,500.00	\$1,381.24	\$2,500.00
Southwest Assoc. Dues	\$1,075.00	\$1,016.00	\$1,020.00	\$1,057.50	\$1,058.00	\$1,187.50	\$1,058.00
Shepherd's Fund	\$500.00	\$0.00	\$0.00				
Mission and Outreach Supplies	\$300.00	\$0.00	\$150.00		\$100.00	\$513.50	\$300.00
Designated Missions*	\$2,825.00	\$3,589.50	\$4,300.00	\$1,249.50	\$4,300.00	\$4,713.65	\$4,300.00
Evangelism	\$500.00	\$415.75	\$750.00	\$1,246.76	\$750.00	\$283.19	\$750.00
	\$13,700.00	\$13,510.97	\$14,720.00	\$12,043.48	\$14,708.00	\$14,079.08	\$14,908.00
CONGREGATIONAL CARE							
	\$500.00	\$0.00	\$500.00		\$100.00		\$100.00

	2015 Budget	2015 Actual	2016 Budget	2016 Actual	2017 Budget	2017 Actual	2018 Budget
CHURCH MAINTENANCE							
Janitors Salary	\$3,120.00	\$3,120.00	\$3,120.00	\$3,211.32	\$3,120.00	\$2,744.95	\$3,120.00
Social Security/Medicare	\$239.00	\$238.68	\$240.00	\$220.32	\$240.00	\$201.96	\$240.00
Workers Compensation	\$500.00	\$375.00	\$500.00	\$385.11	\$500.00	\$576.50	\$500.00
Property Repairs/Maintenance	\$1,000.00	\$245.49	\$500.00	\$826.63	\$750.00	\$855.00	\$500.00
Janitors Supplies	\$400.00	\$236.93	\$400.00	\$447.51	\$400.00	\$281.68	\$400.00
Natural Gas	\$6,500.00	\$4,544.98	\$5,000.00	\$3,614.16	\$5,000.00	\$2,919.71	\$4,000.00
Water	\$800.00	\$719.37	\$700.00	\$768.08	\$700.00	\$713.45	\$800.00
Phone/Internet	\$2,600.00	\$2,630.25	\$2,600.00	\$2,802.77	\$2,600.00	\$1,502.76	\$2,000.00
Electricity	\$4,800.00	\$3,570.57	\$3,500.00	\$3,216.19	\$3,500.00	\$4,300.43	\$3,500.00
Church Insurance	\$4,425.00	\$6,091.00	\$5,000.00	\$4,269.75	\$5,000.00	\$5,244.50	\$5,000.00
Elevator Contract/Maintenance	\$2,100.00	\$2,320.38	\$2,400.00	\$2,253.36	\$2,400.00	\$2,469.24	\$2,400.00
Fire Inspection/Extinguishers	\$200.00	\$70.00	\$100.00	\$151.55	\$150.00	\$129.20	\$150.00
	\$26,684.00	\$24,162.65	\$24,060.00	\$22,166.75	\$24,360.00	\$21,939.38	\$22,610.00
				\$2,178.79		\$3,241.59	
Withholding Taxes							
OUTSTANDING DEBT							
Parsonage Fund Loan	\$1,500.00	\$1,500.00	\$1,500.00	\$1,500.00	\$1,500.00	\$1,500.00	\$0.00
As of Dec. 31, 2016							\$1,282.50
Debt to Memorial Fund-1282.50							\$156,406.50
TOTAL EXPENSES	\$142,185.00	\$138,536.90	\$146,400.00	\$135,053.93	\$152,346.00	\$98,910.77	\$156,406.50
INCOME							
Projected Offerings	\$120,000.00	\$123,260.37	\$133,600.00	\$109,757.26	\$139,246.00	\$126,695.73	\$142,606.50
"In God We Trust" Or ***	\$12,360.00	\$0.00	\$0.00	\$0.00	\$3,500.00	\$5,333.28	\$3,500.00
Miscellaneous Income**	\$2,000.00	\$4,317.38	\$3,500.00	\$3,809.33	\$250.00	\$195.00	\$400.00
Neighbors in Need*	\$300.00	\$90.00	\$250.00	\$5.00	\$500.00	\$394.00	\$500.00
Christmas Fund*	\$350.00	\$362.00	\$300.00	\$160.00	\$500.00	\$460.00	\$500.00
One Great Hour of Sharing*	\$175.00	\$660.00	\$500.00		\$1,500.00	\$1,747.50	\$1,600.00
The Giving Tree*	\$1,500.00	\$30.00	\$1,500.00	\$1,590.69	\$350.00	\$204.50	\$300.00
Lenten Self Denial Folders*	\$250.00	\$259.50	\$250.00	\$349.50	\$1,500.00		\$1,500.00
Misc. Designated Missions*	\$250.00	\$2,188.00	\$1,500.00	\$1,480.42			
Above & Beyond	\$0.00	\$150.00	\$0.00				
Church Dinner	\$10,000.00	\$11,695.76	\$10,000.00	\$10,933.00	\$10,000.00	\$10,321.50	\$10,500.00
Less Church Dinner Expenses	-\$5,000.00	-\$4,712.90	-\$5,000.00	-\$5,668.66	-\$5,000.00	\$1,128.60	-\$5,000.00
TOTAL INCOME	\$142,185.00	\$138,300.11	\$146,400.00		\$152,346.00	\$146,480.11	\$156,406.50
*Designated Mission Contributions							
**Includes Interest, Initial Offerings, Bulletins, Hall Rental, Plant/Flower Donations, etc.							
*** Represents the gap between estimated revenues and expenses.							
**** Budget items increased from 2017 budget							

UNITED CHURCH OF CHRIST
ELEVEN YEAR CHURCH PROFILE BASED ON DATA REPORTED IN UCC YEARBOOKS



Church#: 860170

Assoc: 836 **Schedule:** 0 First United Church of Christ Belleville WI 53508

YEAR	MEMBERS	AVG WEEKLY ATTENDANCE	CHR ED/ FAITH FORM	CONFIRMATION	CONFESSION	TRANSFER OR REAFFIRM	DEATHS OR TRANS OUT	OTHER LOSSES	NET MEMBS ADDS-REMOVED
2007	350	75	50	8	7	8	12	0	11
2008	285	90	55	9	7	0	9	72	-65
2009	300	90	55	15	0	8	4	4	15
2010	306	83	65	5	0	3	11	0	-3
2011	309	80	12	4	0	4	5	0	3
2012	307	75	47	6	4	0	12	0	-2
2013	254	70	35	3	2	0	13	45	-53
2014	235	70	69	3	3	0	5	20	-19
2015	250	75	56	9	9	1	4	0	15
2016	250	75	30	9	0	2	11	0	0
2017	211	65	20	4	0	8	8	43	-39

YEAR	CURRENT EXPENSES	CAPITAL PAYMENTS	BASIC SUPPORT	TOT OTHER UCC GIVING	TOTAL OCWM	OTHER GIFTS	WIDER MISSION	BASIC SUPP% CURR LOCAL	TOTAL EXPEND	PLEDGES AND OFFERINGS
2007	\$116,283	\$88,255	\$6,900	\$1,585	\$8,485	\$1,400	\$9,885	5.93	\$214,423	\$113,284
2008	\$11,789	\$44,304	\$5,000	\$1,196	\$6,196	\$1,300	\$7,496	42.41	\$63,589	\$113,057
2009	\$11,789	\$0	\$6,000	\$1,904	\$7,904	\$0	\$7,904	50.89	\$19,693	\$0
2010	\$145,709	\$36,123	\$6,000	\$1,520	\$7,520	\$1,210	\$8,730	4.12	\$190,562	\$111,720
2011	\$131,564	\$0	\$6,000	\$0	\$6,000	\$0	\$6,000	4.56	\$137,564	\$143,582
2012	\$131,564	\$0	\$6,000	\$1,005	\$7,005	\$0	\$7,005	4.56	\$138,569	\$114,611
2013	\$116,328	\$12,068	\$6,000	\$0	\$6,000	\$6,880	\$12,880	5.16	\$141,276	\$116,777
2014	\$122,955	\$6,573	\$6,000	\$4,239	\$10,239	\$3,262	\$13,501	4.88	\$143,029	\$115,229
2015	\$121,094	\$3,572	\$6,000	\$5,758	\$11,758	\$2,486	\$14,244	4.95	\$138,910	\$123,260
2016	\$129,024	\$1,107	\$6,000	\$5,240	\$11,240	\$2,105	\$13,345	4.65	\$143,476	\$117,953
2017	\$22,000	\$0	\$6,000	\$309	\$6,309	\$14,079	\$20,388	27.27	\$42,388	\$126,696

% CHANGE	MEMBERS	AVG WEEKLY ATTENDANCE	CHR ED/ FAITH FORM	TOTAL ADDITIONS	TOTAL REMOVALS	CURR LOCAL EXPENSES	TOTAL OCWM	TOTAL EXPENDITURE
2012-2017	-31.27	-13.33	-57.45	20.00	325.00	-83.28	-9.94	-69.41
2007-2017	-39.71	-13.33	-60.00	-47.83	325.00	-81.08	-25.65	-80.23

Please note: Zero values ("0" or "\$0") may reflect missing information in some years. Christian Education/Faith Formation refers to Church School Enrollment for all figures before 2007.

CHURCH COUNCIL MEMBERS & OFFICERS COMMITTEE MEMBERS 2018

CHURCH COUNCIL MEMBERS

Barb Babler 513-0217
harpybarb@gmail.com
 Jayne Campbell 424-6271, 575-6176
pncc@chorus.net
 Greg Graves 575-5788
ggraves1965@charter.net
 Jean Heinzman 516-8103
gjheinzman@gmail.com
 Stacy Heller 819-9336
HellerStacyD@JohnDeere.com
 Tanya Helwig 219-0901
helwigroofing@earthlink.net
 Paul D. Hodel 576-1876
phodel@mac.com
 Shawn Kippley 235-1896
srkippley@gmail.com

Eric Shrader 424-1558, 235-2512
eric.shrader@m3ins.com
 Sandy Van Kleeck 527-3322, 692-6263
vankleecks@wwdb.org
 Greg Wolff 424-3830, 712-7335
wolffbelfar@litewire.net

CHURCH OFFICERS

President	Paul D. Hodel
Vice President	Greg Wolff
Secretary	Shawn Kippley
Treasurer	Ron Babler
Financial Treasurer	Juanita Harbort

ADMINISTRATIVE TEAMS

FINANCE/ BUDGET/ PERSONNEL

Ron Babler, Chair
 Brenda Gehin
 Juanita Harbort
 *Stacy Heller
 *Paul D. Hodel
 Doug Myers
 Esther Olson

COUNTING TEAM

Juanita Harbort, Lead
 Mary Austin
 Darlene Kittleson
 Joan Root

ENDOWMENT

Karisa Hurst, Chair
 Chris Copeland
 Brenda Gehin,
 Secretary/Treas.
 Mitch Heller
 *Paul D. Hodel
 (non-voting member)
 Jean McCarragher

MEMORIAL

Kim Goke, Chair
 Sandy Fransen
 *Jean Heinzman
 Jean Hodel
 Kathy Marty

FUNDRAISING/ FELLOWSHIP

Betsy Jacobs, Chair
 Juanita Harbort
 *Shawn Kippley
 Kathy Stenseth
 Lori J. Yaun

BUILDING & GROUNDS

Kerry Van Kleeck, Chair
 Herb Blaser
 Don Boley
 Tony Buol
 Jerry Butts
 Jeff Christen
 Brian Duffin
 Steve Erb
 Neal Gehin
 *Greg Graves
 Jeff Hendrickson
 Ralph Jacobs
 Cory Kelly

CHURCH DINNER TEAM

Pam Kelly, Chair	Myron Heittola
Donna Christen	*Tanya Helwig
Jeff Christen	*Paul D. Hodel
Betty Goke	Betsy Jacobs
Kim Goke	Ralph Jacobs
Rodger Goke	*Shawn Kippley
Michele Gratz	Kathy Stenseth
Shawn Gratz	Kerry Van Kleeck
*Jean Heinzman	*Greg Wolff
Lois Heittola	

NOMINATING

*Greg Wolff, Chair
 *Jayne Campbell
 *Paul D. Hodel
 *Shawn Kippley
 Kathy Stenseth
 *Sandy Van Kleeck

**Denotes Council Representative on Committee*

CHRISTIAN EDUCATION

C.E. TEAM

*Barb Babler
*Jayne Campbell
Donna Christen
Karisa Hurst
DeLynn Palmer

YOUTH FELLOWSHIP

ADULT EDUCATION

CONGREGATIONAL VITALITY

STEWARDSHIP/ MEMBERSHIP COMM.

*Sandy Van Kleeck, Chair
Michele Gratz
*Greg Graves
Lori Krug
*Greg Wolff

PASTOR/PARISH RELATIONS COMM.

Esther Olson, Chair
Shawn Gratz
Myron Heittola
Esther Huntoon
Lori Krug
*Greg Wolff

CARE & SHARE

Betty Goke
Esther Huntoon
Betsy Jacobs
*Shawn Kippley
Kathy Marty
Joan Root

WOMEN'S GUILD

Mary Boley, President
Betsy Jacobs, Secretary
Sylvia Zentner, Treasurer
*Jean Heinzman

WORSHIP, MUSIC AND ART

WORSHIP/MUSIC/ART COMMITTEE

*Barb Babler
Kim Goke
Kathy Stenseth
Pastor Ken Schaub

ORGANISTS

Barb Babler
Terry Croft
Kim Goke

CHOIRS

Barb Babler, Vocal Choir
Director and Bell Choir
Director
Kim Goke, Solo
Accompanist

MISSION AND OUTREACH

MISSION & OUTREACH COMMITTEE

Kathy Marty, Chair
Jean Hodel
*Shawn Kippley
Karen Meier

PASTORAL SEARCH COMMITTEE

*Tanya Helwig, Chair
Cassidy Heller, Youth Member
*Paul D. Hodel
Richard Kittleson
Tricia Kittleson
Lori Krug, Chaplain
Kathy Marty
Michelle Mullen, Communication Lead
*Sandy Van Kleeck, Secretary
Rev. Kenneth L. Schaub, Pastoral Advisor
